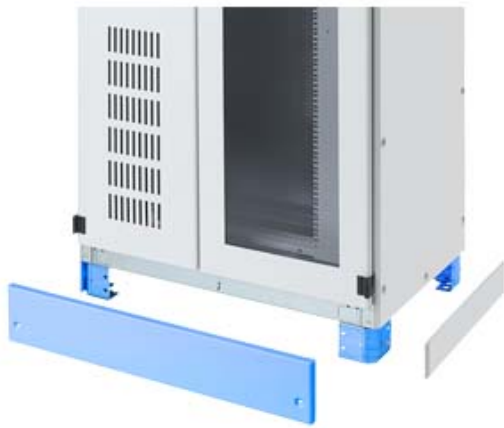


SIVACON SICUBE STAND



Suitability

Suitability for interaction / cable assignment		No
Suitability for use / for outside use		No

Appearance

Color		pebble grey
-------	--	-------------

Product function

Product function / Ventilation can be integrated		No
--	--	----

Mechanical Design

Width	mm	1 200
Material		steel

General Product Approval	EMC	Declaration of Conformity	Test Certificates	other
--------------------------	-----	---------------------------	-------------------	-------



[other](#)



EG-Konf.

[Special Test Certificate](#)

[other](#)

Further information

**Information- and Downloadcenter (Catalogs, Brochures,...)**

<http://www.siemens.com/lowvoltage/catalogs>

**Industry Mall (Online ordering system)**

<https://eb.automation.siemens.com/mall/en/WW/Catalog/Product/8MF10202CS>

**Service&Support (Manuals, Certificates, Characteristics, FAQs,...)**

<http://support.automation.siemens.com/WW/view/en/8MF10202CS/all>

Image database (product images, 2D dimension drawings, 3D models, device circuit diagrams, ...)

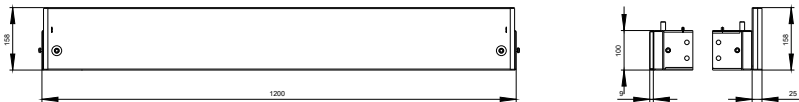
[http://www.automation.siemens.com/bilddb/cax\\_en.aspx?mlfb=8MF10202CS](http://www.automation.siemens.com/bilddb/cax_en.aspx?mlfb=8MF10202CS)

**CAX-Online-Generator**

<http://www.siemens.com/cax>

**Tender specifications**

<http://ausschreibungstexte.siemens.com/typv>



last modified:

11.03.2015