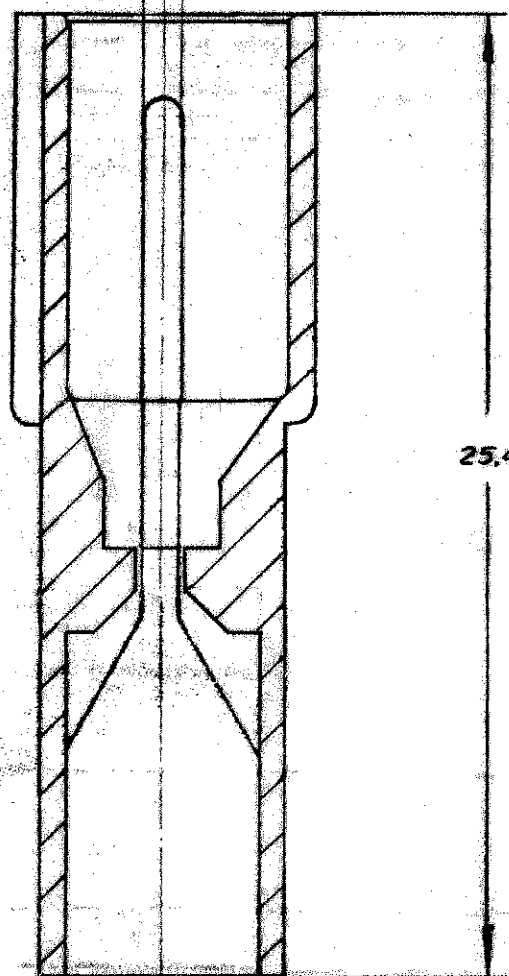
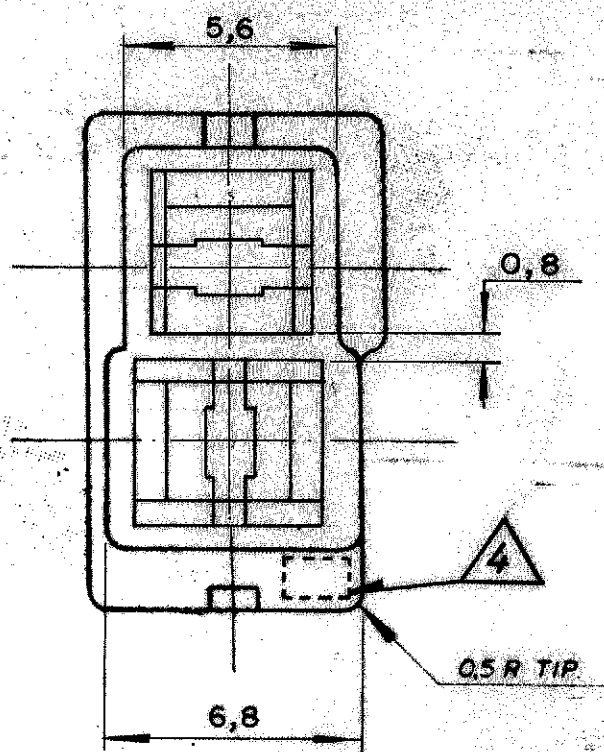
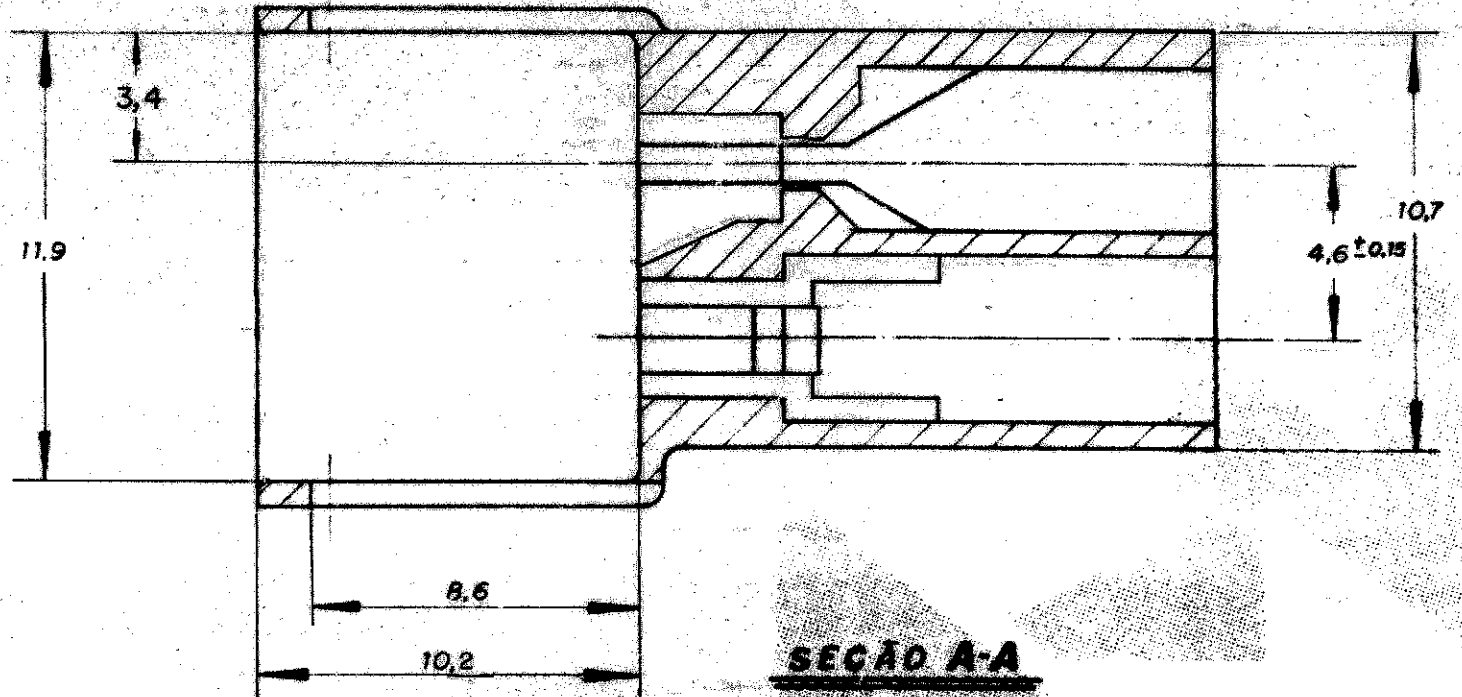
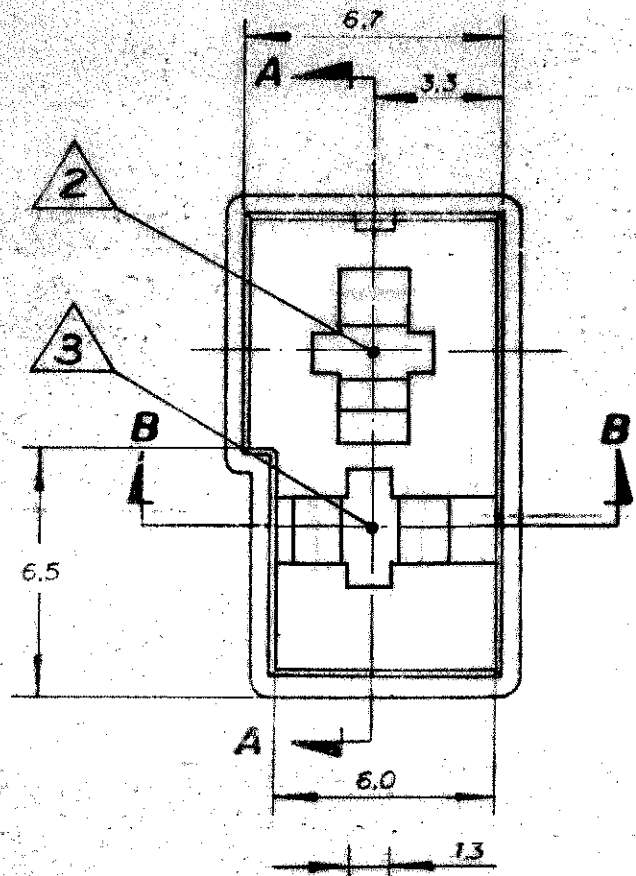


C 626065



- ① - RAW MATERIAL ACC. TO SPEC. IEC 60335-1, GWT 750°C, WITHOUT FLAME.
MATERIA PRIMA CONFORME ESPECIFICAÇÃO IEC 60335-1, GWT 750°C, SEM CHAMAS.
- ② - CIRCUITO 1 - SOMENTE PARA REFERÊNCIA
- CIRCUIT 1 - FOR REFERENCE ONLY
- ③ - CIRCUITO 2 - SOMENTE PARA REFERÊNCIA
- CIRCUIT 2 - FOR REFERENCE ONLY
- ④ - NUMERO DA CAVIDADE DO MOLDE.
MOLD CAVITY NUMBER.
- ⑤ - OBSOLETE PARTS: OBSOLETE CIS STREAMLINING PER D.RENAUD/D.SINISI

NATURAL	PA 6.6 V-0	①	1-626065-2
NATURAL	PA 66- ZYTEL 103 HSL	⑤	1-626065-1
NATURAL	PBT V-0	⑤	1-626065-0
ORANGE	POLIAMIDA 6.6	⑤	626065-9
VIOLET		⑤	626065-8
GRAY		⑤	626065-7
BROWN		⑤	626065-6
BLACK			626065-5
YELLOW		⑤	626065-4
BLUE		⑤	626065-3
GREEN		⑤	626065-2
RED		⑤	626065-1
NATURAL	POLIAMIDA 6.6		626065-0

OTHER TREATMENT	① FINISH	MATERIAL	PART NUMBER
CUSTOMER DWG for REFERENCE ONLY			
THIS DRAWING IS UNPUBLISHED. RELEASED FOR PUBLICATION IS			
© COPYRIGHT 1984 BY AMP CO BRASIL LTDA S.P. ALL INTERNATIONAL RIGHTS RESERVED. AMP PRODUCTS MAY BE COVERED BY U.S. AND FOREIGN PATENTS AND/OR PATENTS PENDING.			
TOLERANCES UNLESS OTHERWISE STATED		INS. DIA RANGE	WIRE RANGE
DEC ± 0.15			SCALE
ANGLES ± 1°		AMP AMP do BRASIL LTDA. São Paulo, Brasil	
DESCRIPTION 2 way .110S. FAST-IN-ON TAB HSG.			
DWG NO A3		SHEET 10/1	
C 626065			

L3	REV PER ECO-09-026444	KK	AEG	27NOV09
L2	REV. BY ECO 07-023120	H.C	WLS.	PROCT 07
L1	REV. BY ECO-07020700	NCL	MR.	043009
L	REVISED BY ECO 05-04287	H.C	WLS.	15FEB 06
K	REVISED BY EC 18-00	042/03	H.C	16/07/03
J1	1-626065-0 1-626065-1 ADDED	MRB	PLF	05 DEC 97
J	REVISED BY	Briz	JRG	10 OCT 06
I	REDES. C/ MODIFICAÇÕES	N.P.		18.10.84
SS	REVISION RECORD	DR	CHK	DATE