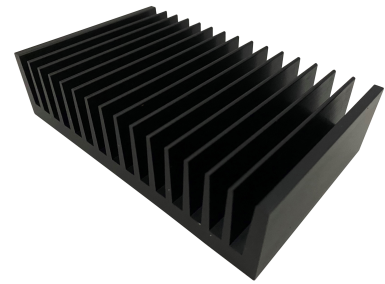


Heat Sink

Features

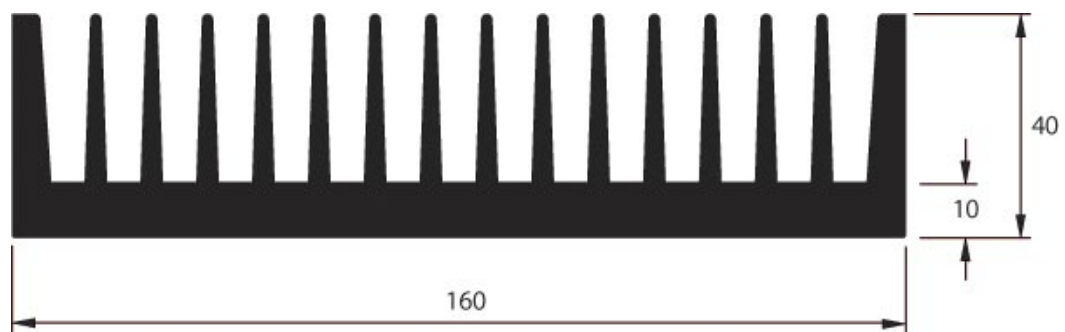
- RoHS compliant
- Tolerances in accordance with BS EN 12020 / BS EN 755
- Excellent performance for a one piece extrusion
- Ideal with LED, Traction, Hi-Fi and UPS applications



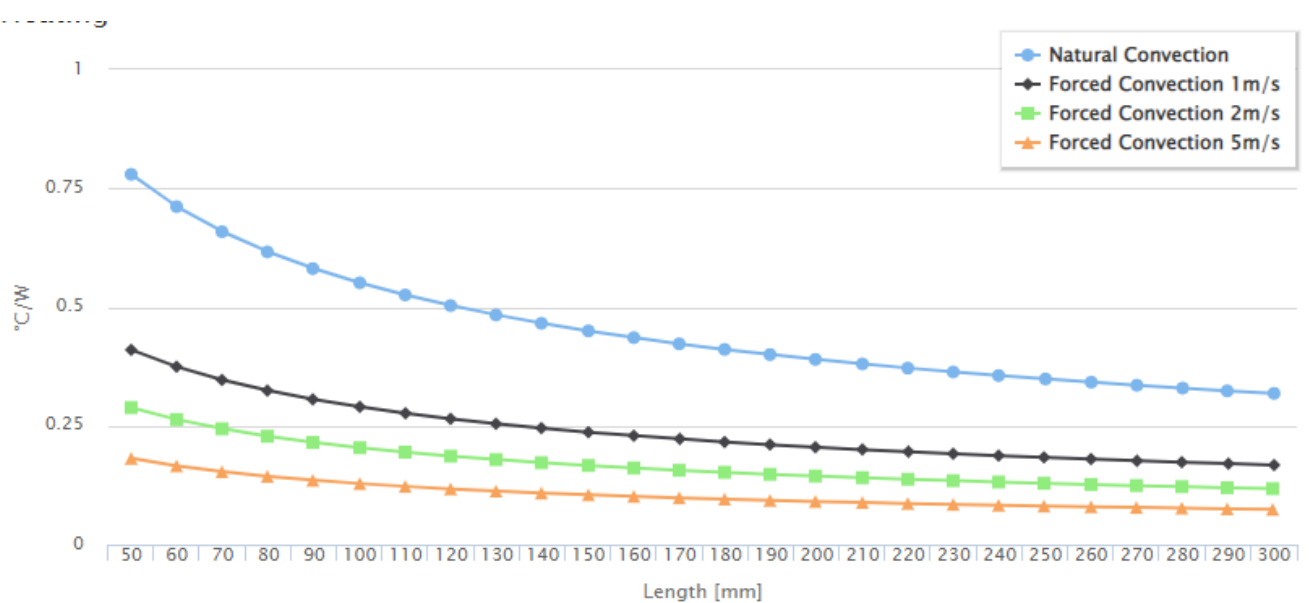
Specification

| | |
|---------------------|-----------------|
| Finish | Black Anodise |
| Material | Aluminium Alloy |
| Height | 40 mm |
| Width | 160 mm |
| Length | 200 mm |
| Tolerance on Length | +/- 0.5 mm |
| Thermal Resistance | 0.53 W/°C |

Drawing



Heating



Art. Nr.
RND 460-00159