

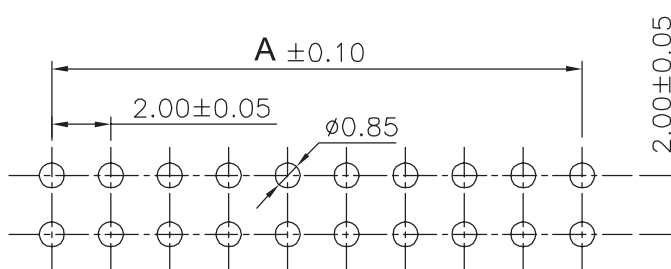
1

2

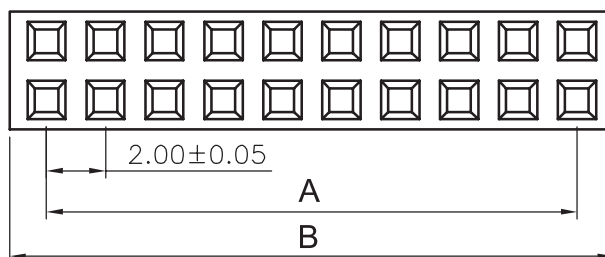
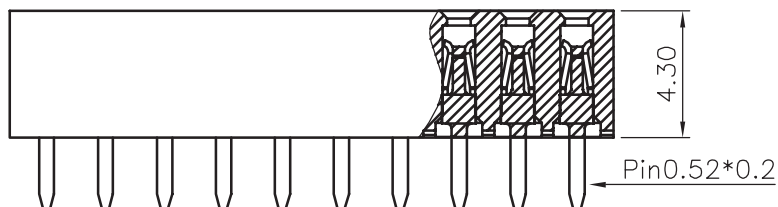
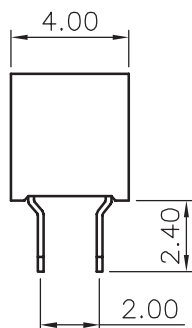
3

4

5



PCB LAYOUT - COMPONENT VIEW



TECHNICAL CHARACTERISTICS

MATERIAL
 INSULATOR: PA9T
 FLAMMABILITY RATING: UL94-V0
 COLOR: BLACK
 CONTACT MATERIAL: COPPER ALLOY
 CONTACT TYPE: STAMPED
 CONTACT PLATING: GOLD
 QUALITY CLASS: 3 AS PER CECC 75 301-802
 PITCH: 2.00MM

ENVIRONMENTAL
 OPERATING TEMPERATURE: -40 UP TO 105°C
 COMPLIANCE: LEAD FREE AND ROHS

ELECTRICAL
 CURRENT RATING: 2 A MAX
 WORKING VOLTAGE: 250 VAC
 INSULATOR RESISTANCE: >1000 MΩ
 DIELECTRIC WITHSTANDING VOLTAGE: 500 VAC/MIN
 CONTACT RESISTANCE: 20 mΩ MAX

STANDARD
 CERTIFIED: E323964

SOLDERING
 JEDEC LEAD FREE WAVE SOLDERING

PACKAGING
 TUBE

DIMENSION
 A = 2.00 x (NB. PIN / 2 - 1)
 B = 2.00 x (NB. PIN / 2) + 0.5

RoHS Compliant

PROJECTION:



GENERAL TOLERANCE

.X = +/- 0.2

.XX = +/- 0.15



APPROVAL: GMo

UNIT: MM

DESCRIPTION: WR-PHD - 2.00MM DUAL SOCKET HEADER

SIZE

SCALE:

WERI PART NO: 620 0xx 218 21

A4

SHEET: 1/3

DRAW: AS

REV

DATE

FILE

BY

J
I
H

27-OCT-15

PACKAGING

AK

1

2

3

4

5

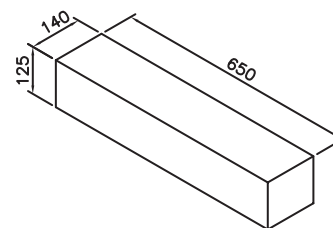
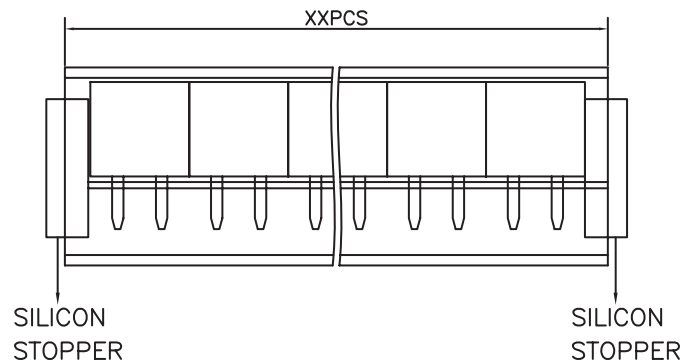
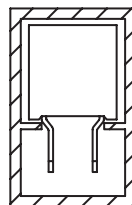
A

B

C

D

Pin.	Pcs/Tube	Tube/Carton	Pcs/Carton	Pin.	Pcs/Tube	Tube/Carton	Pcs/Carton
4	135	190	25650	44	13	190	2470
6	94	190	17860	46	13	190	2470
8	72	190	13680	48	12	190	2280
10	58	190	11020	50	12	190	2280
12	49	190	9310	52	11	190	2090
14	42	190	7980	54	11	190	2090
16	37	190	7030	56	10	190	1900
18	33	190	6270	58	10	190	1900
20	30	190	5700	60	10	190	1900
22	27	190	5130	62	9	190	1710
24	25	190	4750	64	9	190	1710
26	23	190	4370	66	9	190	1710
28	21	190	3990	68	9	190	1710
30	20	190	3800	70	8	190	1520
32	18	190	3420	72	8	190	1520
34	17	190	3230	74	8	190	1520
36	16	190	3040	76	8	190	1520
38	16	190	3040	78	7	190	1330
40	15	190	2850	80	7	190	1330
42	14	190	2660				



INNER CARTON

Note:
 1,Dimension
 Tube Size: L=635mm
 Carton Size:650(L)X140(W)X125(H) (mm)
 2,Quantity:
 190 Tube/Carton

RoHS Compliant

PROJECTION:



GENERAL TOLERANCE

.X = ± 0.2 .XX = ± 0.15 

APPROVAL: GMo

UNIT: MM

DESCRIPTION: WR-PHD - 2.00MM DUAL SOCKET HEADER

SIZE

SCALE:

WERI PART NO: 620 0xx 218 21

A4

SHEET: 2/3

DRAW: AS

G			
F			
E			
D			
C			
B			
A			
REV	DATE	FILE	BY

1

2

3

4

5

Cautions and Warnings:

This electronic component is designed and developed with the intention for use in general electronics equipments.

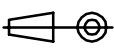

Before incorporating the components into any equipments in the field such as aerospace, aviation, nuclear control, submarine, transportation, (automotive control, train control, ship control), transportation signal, disaster prevention, medical, public information network etc. where higher safety and reliability are especially required or if there is possibility of direct damage or injury to human body, Würth Elektronik must be asked for a written approval.

In addition, even electronic component in general electronic equipments, when used in electrical circuits that require high safety, reliability functions or performance, the sufficient reliability evaluation-check for the safety must be performed before by the user before usage.

A

B

C

RoHS Compliant				PROJECTION: 	GENERAL TOLERANCE .X = +/- 0.2 .XX = +/- 0.15	 WÜRTH ELEKTRONIK	DESCRIPTION: DISCLAIMER	SIZE A4
G								
F								
E								
D								
C				APPROVAL: JC	UNIT: MM	WERI PART NO: DISCLAIMER	SIZE A4	
B					SCALE:			
A	10-SEP-14	PDF	QL		SHEET: 3/3			
REV	DATE	FILE	BY		DRAW: QL			

D