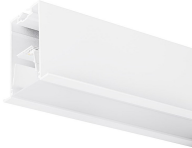


Mini Continuum II - Direct - Trim - Extensions

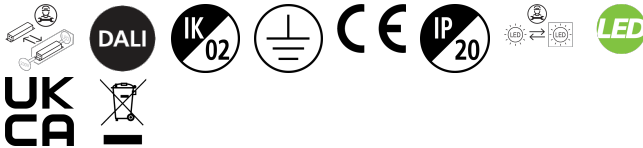
MC2 TRIM 0.6M 3K DALI WHT OPAL

2093161



Product features

- 2093161 MC2 TRIM 0.6M 3K DALI WHT OPAL Continuous lines of LED light, white RAL 9016, direct distribution, extension module, trim detail for plasterboard ceilings, suitable for recessed installation either horizontally or vertically, various accessories available, compact and minimalist design based on the Golden Mean, ideal for offices, meeting rooms, corridors, education facilities, museums and libraries, extruded aluminium body, diffuser: opal, colour temperature: 3000K warm white, total system power: 10W, total fixture output: 1100lm, luminaire efficacy: 110lm/W, LOR: 100%, colour rendering: Ra >80, LED Chromacity: 3 step MacAdam ellipse, lifespan: 66,000 hours L90B10, IR/UV free light source without heat radiation, operating voltage: 220-240V / 50-60Hz, drive current: 400mA, electronic driver, DALI dimmable, electrical protection: CLASS I, IP20, suitable for internal environment only.



PRODUCT OVERVIEW

Product name	MC2 TRIM 0.6M 3K DALI WHT OPAL
Technology	LED
Housing	Aluminium
Mount	Ceiling recessed mounting
Environment	Internal
General application	Education, Hospitality, Office, Retail
ETIM Class	EC002557
E-number FI	4237856
Warranty	5 years
Fixture luminous flux (lm)	1100
Luminaire efficacy (lm/W)	110
LOR (%)	100
Colour temperature (K)	3000
Light colour	Warm White
CRI (Ra)	80
Colour Variation Initial (SDCM)	SDCM3
Glare control	< 17
Photobiological Risk Group	RG0
Total power consumption (W)	10
Electrical protection	Class I
Control gear type	Electronic ballast
Dimming method	DALI
Minimum dimming level (%)	1
Housing colour	White
IP rating	IP20
IK rating	IK02
Product EAN number	5025768931613

DATA TABLE

Mini Continuum II - Direct - Trim - Extensions

MC2 TRIM 0.6M 3K DALI WHT OPAL

2093161

General data

Product name	MC2 TRIM 0.6M 3K DALI WHT OPAL
Technology	LED
Housing	Aluminium
Mount	Ceiling recessed mounting
Environment	Internal
General application	Education, Hospitality, Office, Retail
Performance ambient temperature Tq (°C)	25
ETIM Class	EC002557
E-number FI	4237856
Warranty	5 years

Optical data

Fixture luminous flux (lm)	1100
Luminaire efficacy (lm/W)	110
LOR (%)	100
Colour temperature (K)	3000
Light colour	Warm White
CRI (Ra)	80
Colour Variation Initial (SDCM)	SDCM3
Adjustable chromaticity	N
Glare control	< 17
Photobiological Risk Group	RG0

Electrical data

Total power consumption (W)	10
Mains voltage (V)	220-240V
Lamp power factor	0.95
Electrical protection	Class I
Control gear type	Electronic ballast
Transformer required	Yes
Dimming method	DALI
Minimum dimming level (%)	1
Drive current (mA)	400
Inrush Current (A)	17
Inrush Duration (µs)	170
Energy Efficiency Class (A->G) of contained light source	C
Max. Luminaires per 16A C Breaker	48

Lifetime data

Lifespan L70 B50	120000
Lifespan L80 B20	120000
Lifespan L90 B10	66000

Physical data

Housing colour	White
IP rating	IP20

Mini Continuum II - Direct - Trim - Extensions

MC2 TRIM 0.6M 3K DALI WHT OPAL

2093161

IK rating	IK02
Diffuser finish	Opal
Diffuser material	PC Polycarbonate
Nominal Product Length (mm)	600
Nominal Product Width (mm)	80
Nominal Product Height (mm)	86
Cutout Dimensions (W x L in mm or Diameter in mm)	60 x 600
Weight (kg)	1.5
Recessed Depth (mm)	136

Packaging

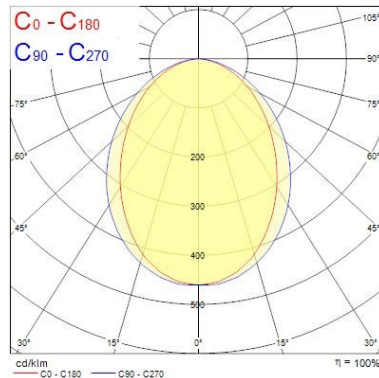
Single packaging type	Carton
Product EAN number	5025768931613
Packaging single length / height (cm)	65.0
Packaging single width (cm)	9.0
Packaging single depth (cm)	10.0
DUN14 (outer)	05025768931613
Units per outer package	1
Packaging outer length / height (cm)	65.0
Packaging outer width (cm)	9.0
Packaging outer depth (cm)	10.0

PHOTOMETRY

Distance [m]	Cone diameter [m]	E(0°)	E(C90)	E(C0)	Illuminance [lx]
0.5	1.11 0.88	1989	48.1° 286	41.3° 424	
1.0	2.23 1.76	500	48.1° 154	41.3° 108	
1.5	3.34 2.64	222	48.1° 83	41.3° 67	
2.0	4.46 3.51	128	48.1° 59	41.3° 49	
2.5	5.57 4.39	80	48.1° 45	41.3° 37	
3.0	6.69 5.27	58	48.1° 35	41.3° 27	

Distance [m] Cone diameter [m] Illuminance [lx]

— C0 - C180 (Half beam angle: 92.9°)
— C90 - C270 (Half beam angle: 96.2°)



TECHNICAL DRAWINGS

