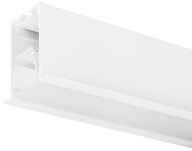


## Mini Continuum II - Direct - Trim

### MC2 TRIM 1.2M 3K DALIEM WHT OPAL

### 2093134



#### Product features

- 2093134 MC2 TRIM 1.2M 3K DALIEM WHT OPAL Continuous lines of LED light, white RAL 9016, direct distribution, trim detail for plasterboard ceilings, suitable for recessed installation either horizontally or vertically, various accessories available, compact and minimalist design based on the Golden Mean, ideal for offices, meeting rooms, corridors, education facilities, museums and libraries, extruded aluminium body, diffuser: opal, colour temperature: 3000K warm white, total system power: 24W, total fixture output: 2200lm, emergency output: 121lm, luminaire efficacy: 92lm/W, LOR: 100%, colour rendering: Ra >80, LED Chromacity: 3 step MacAdam ellipse, lifespan: 66,000 hours L90B10, IR/UV free light source without heat radiation, operating voltage: 220-240V / 50-60Hz, drive current: 800mA, electronic driver, DALI dimmable, integral emergency: 3 hour maintained, electrical protection: CLASS I, IP20, suitable for internal environment only.



#### PRODUCT OVERVIEW

Product name	MC2 TRIM 1.2M 3K DALIEM WHT OPAL
Technology	LED
Housing	Aluminium
Mount	Ceiling recessed mounting
Environment	Internal
General application	Education, Hospitality, Office, Retail
ETIM Class	EC002892
Warranty	5 years
Fixture luminous flux (lm)	2200
Luminaire efficacy (lm/W)	92
LOR (%)	100
Colour temperature (K)	3000
Light colour	Warm White
CRI (Ra)	80
Colour Variation Initial (SDCM)	SDCM3
Glare control	< 17
Photobiological Risk Group	RG0
Luminous flux (emergency) (lm)	121
Luminous flux (emergency) (lm)	121
Total power consumption (W)	24
Electrical protection	Class I
Control gear type	Electronic ballast
Dimming method	DALI
Minimum dimming level (%)	1
Housing colour	White
IP rating	IP20
IK rating	IK02
Product EAN number	5025768931347

## Mini Continuum II - Direct - Trim

MC2 TRIM 1.2M 3K DALIEM WHT OPAL  
2093134

### DATA TABLE

#### General data

Product name	MC2 TRIM 1.2M 3K DALIEM WHT OPAL
Technology	LED
Housing	Aluminium
Mount	Ceiling recessed mounting
Environment	Internal
General application	Education, Hospitality, Office, Retail
Performance ambient temperature Tq (°C)	25
ETIM Class	EC002892
Warranty	5 years

#### Optical data

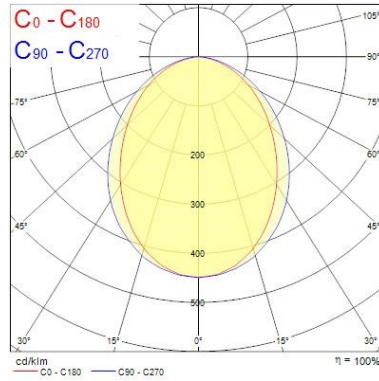
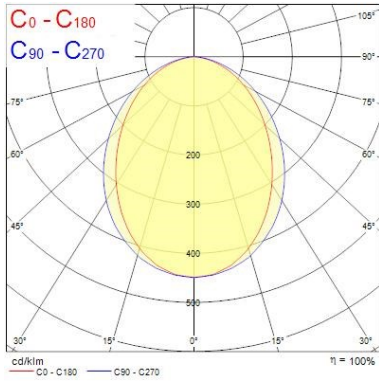
Fixture luminous flux (lm)	2200
Luminaire efficacy (lm/W)	92
LOR (%)	100
Colour temperature (K)	3000
Light colour	Warm White
CRI (Ra)	80
Colour Variation Initial (SDCM)	SDCM3
Adjustable chromaticity	N
Glare control	< 17
Photobiological Risk Group	RG0
Luminous flux (emergency) (lm)	121
Luminous flux (emergency) (lm)	121
Emergency duration (h)	3

#### Electrical data

Total power consumption (W)	24
Mains voltage (V)	220-240V
Lamp power factor	0.98
Electrical protection	Class I
Control gear type	Electronic ballast
Transformer required	Yes
Dimming method	DALI
Minimum dimming level (%)	1
Drive current (mA)	800
Inrush Current (A)	40
Inrush Duration (µs)	178
Energy Efficiency Class (A->G) of contained light source	C
Max. Luminaires per 10A C Breaker	15
Max. Luminaires per 13A C Breaker	20
Max. Luminaires per 16A C Breaker	23
Max. Luminaires per 20A C Breaker	30
Max. Luminaires per 10A B Breaker	9
Max. Luminaires per 13A B Breaker	12



## Mini Continuum II - Direct - Trim MC2 TRIM 1.2M 3K DALIEM WHT OPAL 2093134



### TECHNICAL DRAWINGS

