

Saw holder

For 4 saws, for walls with 10 x 10 mm square holes

® RasterPlan

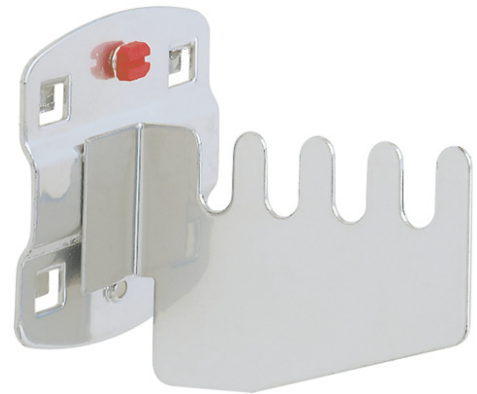
Application:

Individual holder for tools and parts in perforated metal plate walls with 10 x 10 mm square holes, axis distance 38 mm.

Delivery:

Screw included in scope of delivery

Art. no.	50638 337
Suitable for perforated plates	Yes
Suitable for slotted plates	No
Number of carriers	4 PCS
Material	Sheet steel
Colour	Aluminium coloured



EAN-Code

4251142205204