

# Finger Valve

## Series **VHK**

### Features

- ➔ In line shut-off valve.
- ➔ Compact and light weight.
- ➔ Thread or one-touch fittings.
- ➔ 2 port and 3 port versions.
- ➔ Optional red handle.



### How to Order

VHK **2** - **02S** - **02S** **R**

Valve model

2	2 port valve
3	3 port valve

1(P) port size

04F	ø4
06F	ø6
08F	ø8
10F	ø10
12F	ø12
M5	M5
01S	R 1/8
02S	R 1/4
03S	R 3/8
04S	R 1/2

Handle color

Nil (Standard)	2 port valve	Gray
	3 port valve	Blue
R (Option)	2 port valve	Red
	3 port valve	

2(A) port size

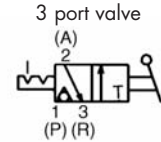
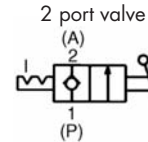
04F	ø4
06F	ø6
08F	ø8
10F	ø10
12F	ø12
M5	M5
01S	R 1/8
02S	R 1/4
03S	R 3/8
04S	R 1/2

See dimensions table for mounting bracket part numbers

Also available:  
Flame resistant type for welding areas.

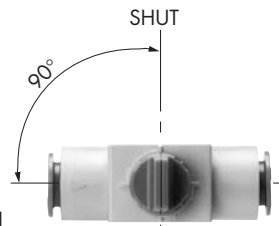


### Symbols

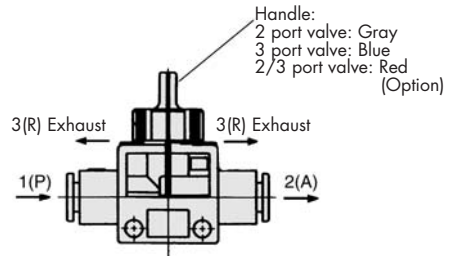


### Specifications

The valve direction clearly indicates whether the valve is open or closed. (SHUT-OPEN: Counterclockwise)



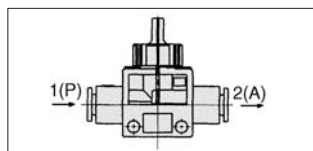
2 port valves and 3 port valves can be distinguished by the color of their handles.



### Specifications

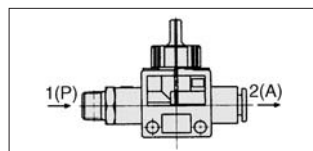
Valve	2/3 port valves
Fluid	Air
Proof pressure	1.5 MPa
Max. operating pressure	1.0 MPa
Operating vacuum pressure (VHK2 type only)	-100 kPa
Ambient temperature and operating fluid temperature	0 to 60°C
Applicable tubing material	Nylon, Soft nylon, Polyurethane
Accessory (Option)	Bracket

### Types available



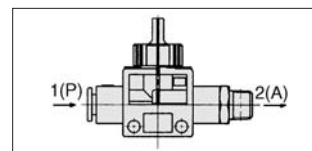
1(P): One-touch fitting  
2(A): One-touch fitting

		Applicable tubing O.D. (mm)				
		2(A)	ø4	ø6	ø8	ø10
Applicable tubing O.D. (mm)	1(P)					
	ø4	●				
	ø6	●	●			
	ø8		●	●		
	ø10			●	●	
ø12				●	●	



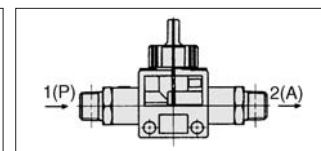
1(P): Male thread  
2(A): One-touch fitting

		Applicable tubing O.D. (mm)				
		2(A)	ø4	ø6	ø8	ø10
Port size R	1(P)					
	M5	●	●			
	1/8	●	●	●		
	1/4		●	●	●	●
	3/8		●	●	●	●
	1/2			●	●	●



1(P): One-touch fitting  
2(A): Male thread

		Port size R				
		2(A)	M5	1/8	1/4	3/8
Applicable tubing O.D. (mm)	1(P)					
	ø4	●	●			
	ø6	●	●	●		
	ø8		●	●	●	
	ø10			●	●	●
ø12			●	●	●	

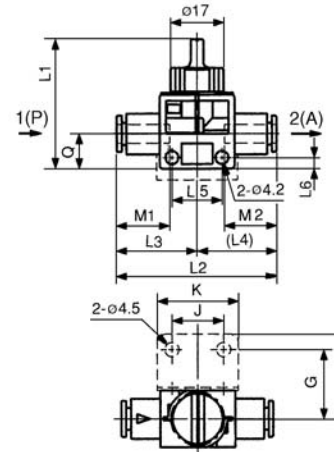
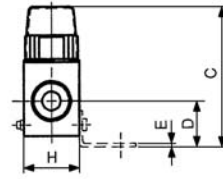


1(P): Male thread  
2(A): Male thread

		Port size R				
		2(A)	M5	1/8	1/4	3/8
Port size R	1(P)					
	M5	●				
	1/8	●	●			
	1/4		●	●		
	3/8			●	●	
	1/2				●	●

Dimensions

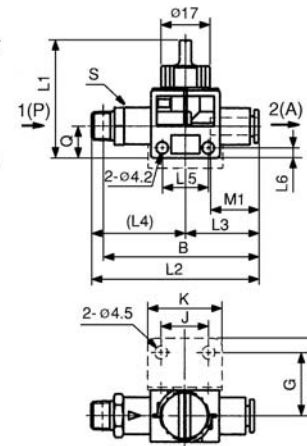
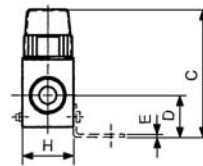
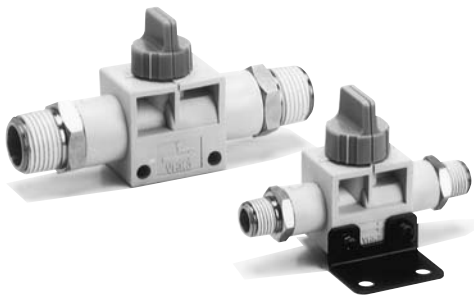
1(P)/2(A): One-touch Fitting



Applicable tubing O. D. (mm)		Model	H	L1	L2	L3	L4	L5	L6	M1	M2	Q	Effective area (mm <sup>2</sup> )		Weight (g)	Bracket mounting dimensions							
1(P)	2(A)												1(P) & 2(A)	2(A) & 3(R)		Bracket assembly no.	C	D	E	F	G	J	K
4	4	VHK□-04F-04F	18	41	47.6	23.8	23.8	16.5	3.5	15.8	15.8	11	3.4	1.2	15	VHK-B1A	44.5	14.5	1	27	22	16.5	26
6	4	VHK□-06F-04F	18	41	48	23.7	23.7	16.5	3.5	16.8	15.8	11	5.1	1.2	15	VHK-B1A	44.5	14.5	1	27	22	16.5	26
	6	VHK□-06F-06F			48.6	24.3	24.3						16.8										
8	6	VHK□-08F-06F	18	41	50.5	24.3	24.3	16.5	3.5	18.7	16.8	11	9	1.2	16	VHK-B1A	44.5	14.5	1	27	22	16.5	26
	8	VHK□-08F-08F			52.4	26.2	26.2						18.7										
10	8	VHK□-10F-08F	22	46	58.5	28	28	21.5	4	20.8	18.7	14	13.7	3.2	28	VHK-B2A	49	17	1	30	25	21.5	31
	10	VHK□-10F-10F			61	30.5	30.5						20.8										
12	10	VHK□-12F-10F	22	46	62	30.5	30.5	21.5	4	21.8	20.8	14	17	3.2	31	VHK-B2A	49	17	1	30	25	21.5	31
	12	VHK□-12F-12F			63	31.5	31.5						21.8										

\* 3 port valve

1(P): Male Thread, 2 (A): One-touch Fitting



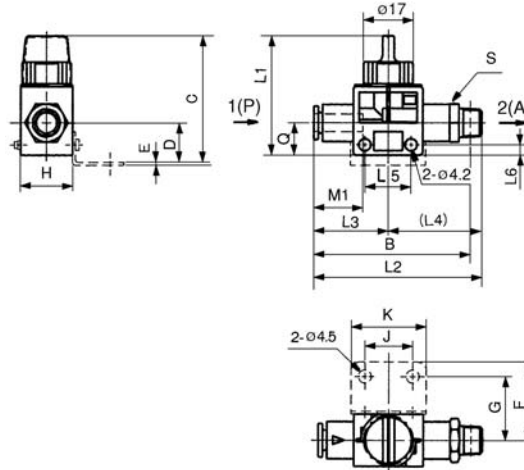
Connection thread R	Applicable tubing O. D. (mm)	Model	H	L1	L2	L3	L4	L5	L6	M1	Q	Effective area (mm <sup>2</sup> )		Weight (g)	B**	S (Width across flats)	Bracket mounting dimensions									
												1(P) & 2(A)	2(A) & 3(R)				Bracket assembly no.	C	D	E	F	G	J	K		
1(P)	4	VHK□-M5-04F	18	41	52.9	23.8	29.1	16.5	3.5	15.8	15.8	11	2.0	1.2	19	49	11	VHK-B1A	44.5	14.5	1	27	22	16.5	26	
	6	VHK□-M5-06F			53.9	24.3	29.6						16.8	2.0	1.2	21	50									13
1/8	4	VHK□-01S-04F	18	41	55.4	23.8	31.6	16.5	3.5	16.8	15.8	11	3.4	1.2	21	51	11	VHK-B1A	44.5	14.5	1	27	22	16.5	26	
	6	VHK□-01S-06F			56.9	24.3	32.6						16.8		7.2	23	53									13
1/4	8	VHK□-01S-08F	18	41	62.2	26.2	36	16.5	3.5	18.7	16.8	11	9.7	1.2	31	58	17	VHK-B1A	44.5	14.5	1	27	22	16.5	26	
	6	VHK□-02S-06F			60.4	24.3	36.1						16.8		7.2	31	54									14
	8	VHK□-02S-08F			65.2	26.2	39						18.7		9.7	32	59									17
	10	VHK□-02S-10F			73.8	30.5	43.3						20.8		16.1	49	68									19
3/8	12	VHK□-02S-12F	22	46	76.3	31.5	44.8	21.5	4	21.8	16.8	14	17.5	3.2	63	70	22	VHK-B2A	49	17	1	30	25	21.5	31	
	6	VHK□-03S-06F			62.4	24.3	38.1						16.8		7.2	41	56									17
	8	VHK□-03S-08F			66.2	26.2	40						18.7		9.7	40	60									17
	10	VHK□-03S-10F			74.8	30.5	44.3						20.8		16.1	51	68									19
1/2	12	VHK□-03S-12F	22	46	77.3	31.5	45.8	21.5	4	21.8	16.8	14	17.5	3.2	64	71	22	VHK-B2A	49	17	1	30	25	21.5	31	
	10	VHK□-04S-10F			78.2	30.5	47.7						20.8		16.1	72	70									22
	12	VHK□-04S-12F	80.2	31.5	48.7	21.8	17.5	70	72	22	VHK-B2A	49	17	1	30	25	21.5	31								

\* 3 port valve

\*\* Reference dimensions after insertion of R thread.

## Dimensions

1(P): One-touch Fitting, 2(A): Male Thread

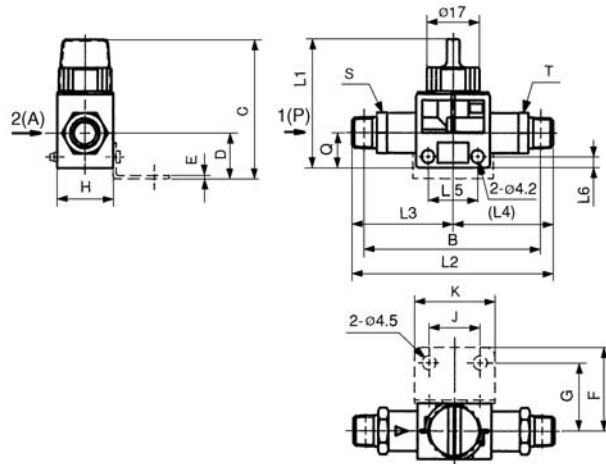
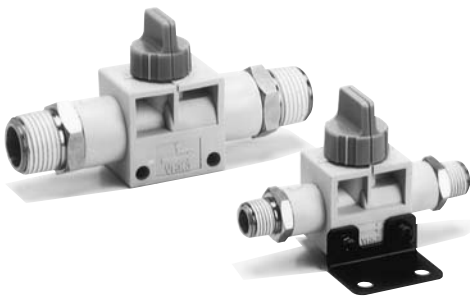


Applicable tubing O. D. (mm)	Connection thread R	Model	H	L1	L2	L3	L4	L5	L6	M1	Q	Effective area (mm <sup>2</sup> )		Weight (g)	B**	S (Width across flats)	Bracket mounting dimensions									
												1(P) R 2(A)	2(A) R 3(R)*				Bracket assembly no.	C	D	E	F	G	J	K		
4	M5	VHK□-04F-M5	18	41	52.9	23.8	29.1	16.5	3.5	15.8	11	2.0	1.2	19	49	11	VHK-B1A	44.5	14.5	1	27	22	16.5	26		
		55.4			31.6		21																		51	13
6	M5	VHK□-06F-M5	18	41	53.9	24.3	29.6	16.5	3.5	16.8	11	7.2	1.2	21	50	11	VHK-B1A	44.5	14.5	1	27	22	16.5	26		
		56.9			32.6		31																		54	17
		60.4			36.1																					
		62.4			38.1																					
		62.2			36																					
8	M5	VHK□-08F-M5	18	41	65.2	26.2	39	16.5	3.5	18.7	11	9.7	1.2	32	59	19	VHK-B1A	44.5	14.5	1	27	22	16.5	26		
		66.2			40																					
		73.8			43.3																					
10	M5	VHK□-10F-M5	22	46	74.8	30.5	44.3	21.5	4	20.8	14	16.1	3.2	49	68	17	VHK-B2A	49	17	1	30	25	21.5	31		
		78.2			47.7																					
		76.3			44.8																					
12	M5	VHK□-12F-M5	22	46	77.3	31.5	45.8	21.5	4	21.8	14	17.5	3.2	63	70	22	VHK-B2A	49	17	1	30	25	21.5	31		
		80.2			48.7																					
		77.3			45.8																					

\* 3 port valve

\*\* Reference dimensions after insertion of R thread.

1(P)/2(A): Male Thread



Connection thread R	Model	H	L1	L2	L3	L4	L5	L6	Q	Effective area (mm <sup>2</sup> )		Weight (g)	B**	S (Width across flats)	T (Width across flats)	Bracket mounting dimensions								
										1(P) R 2(A)	2(A) R 3(R)*					Bracket assembly no.	C	D	E	F	G	J	K	
M5	VHK□-M5-M5	18	41	58.2	29.1	29.1	16.5	3.5	11	2.0	1.2	23	51	11	11	VHK-B1A	44.5	14.5	1	27	22	16.5	26	
1/8	VHK□-01S-M5	18	41	61.6	32.6	29	16.5	3.5	11	2.0	1.2	26	54	13	13	VHK-B1A	44.5	14.5	1	27	22	16.5	26	
	65.2			32.6																				
1/4	VHK□-02S-01S	18	41	71.6	39	32.6	16.5	3.5	11	9.0	1.2	39	62	17	13	VHK-B1A	44.5	14.5	1	27	22	16.5	26	
	78			39																				
3/8	VHK□-03S-02S	22	46	85.1	44.3	40.8	21.5	4	14	13.7	3.2	65	73	19	17	VHK-B2A	49	17	1	30	25	21.5	31	
	88.6			44.3																				
1/2	VHK□-04S-03S	22	46	93	48.7	44.3	21.5	4	14	15.1	3.2	90	79	19	19	VHK-B2A	49	17	1	30	25	21.5	31	
	97.4			48.7																				
	VHK□-04S-04S									17.5		101	81	22	22									

\* 3 port valve

\*\* Reference dimensions after insertion of R thread.