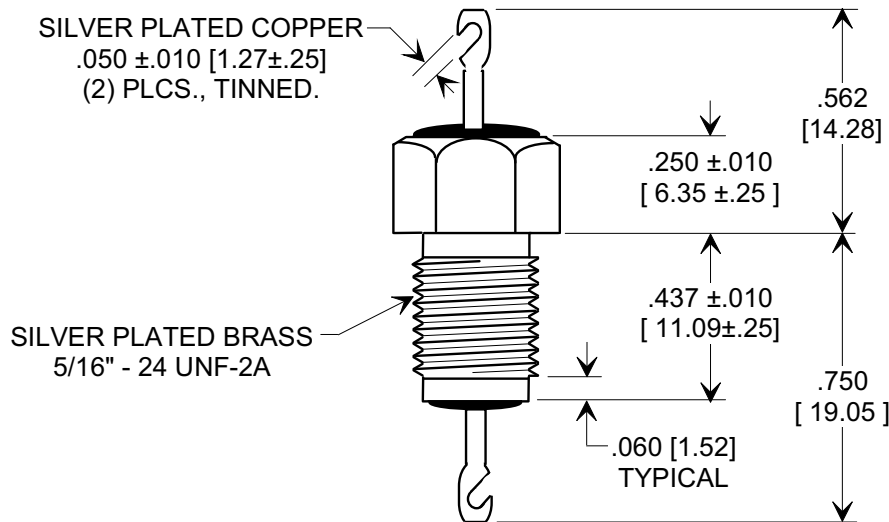
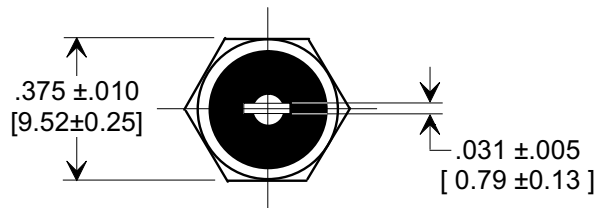
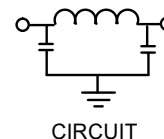
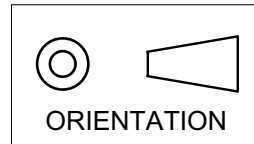


MARKETING SALES DRAWING

DIMENSIONS IN INCHES - DO NOT SCALE THIS DRAWING
 DIMENSIONS IN METRIC - []

This drawing is the property of Tusonix, Inc., and may not be used, reproduced, published or disclosed to others without expressed authorization by Tusonix Inc.

Electrical Testing
 per Tusonix standard
 test plans and Mil-Std-202
 Test Methods.



NOTES:

- TUSONIX NON RoHS PART NUMBER: 4206-001.
 TUSONIX RoHS COMPLIANT PART NUMBER: 4206-001 LF.
 CUSTOMER MUST SPECIFY NON RoHS OR RoHS PART NUMBER WHEN ORDERING.
- LEAD FINISH: NON RoHS PART #: SILVER PLATED COPPER ALLOY WITH 60/40 SOLDER DIPPED ENDS.
 RoHS PART #: SILVER PLATED COPPER ALLOY WITH 95.5 Sn/3.8 Ag/0.7 Cu, SOLDER DIPPED ENDS.
- PART MARKING: TRADEMARK AND VARIATION NUMBER ON HEX FLATS.
 NON RoHS PART: BLACK INK. RoHS PART: GREEN INK.
- SUPPLIED WITH SILVER PLATED HEX NUT AND INTERNAL TOOTH LOCK WASHER.

CAP. (pF)	WORKING VOLTAGE		CURRENT DC (A)	I.R. MIN. @ 100 (VDC.)	DWV	MINIMUM NO LOAD INSERTION LOSS (dB) AT 25°C PER MIL-STD -220			
	85 °C	125 °C				10 MHz	100 MHz	1 GHz	10 GHz
3000	1000 VDC	500 VDC			1200 VAC				
MIN	707 VAC	300 VAC	25	10 G Ω	2400 VDC	10	55	70	70

REVISION RECORD Original Release C.O. DWV 1200VAC WAS 2400VDC. L.E. 03-30-10 ECO- 1251 2400VDC ADDED. L.E. 04-28-10 ECO- 1304 NEW TABLE OF PROPERTIES ORIENTATION. R.J 01-23-16 ECO-00021	0	TOLERANCES unless otherwise specified 2 PLC. DECIMAL ± 3 PLC. DECIMAL ± .031 [0.79] ANGLES ±	Title EMI LOW PASS FILTER	
			Drawn S.M. 06-08-99 Scale 2 X	
			Approved E.F. 06-08-99	
			A	
		TUSONIX TUCSON, ARIZONA	4206-001	

X-2015 Rev-0