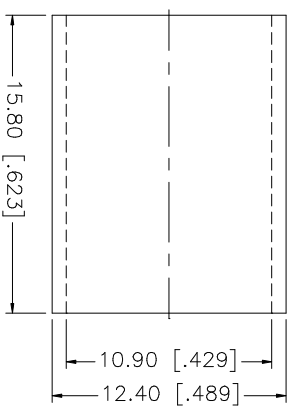
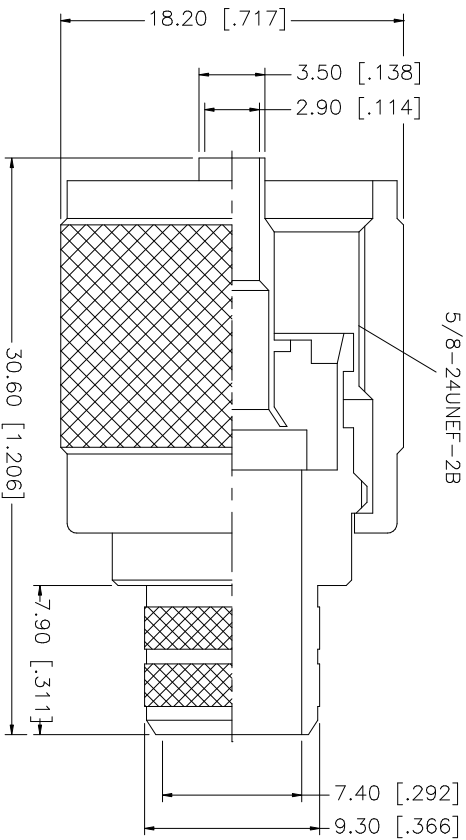
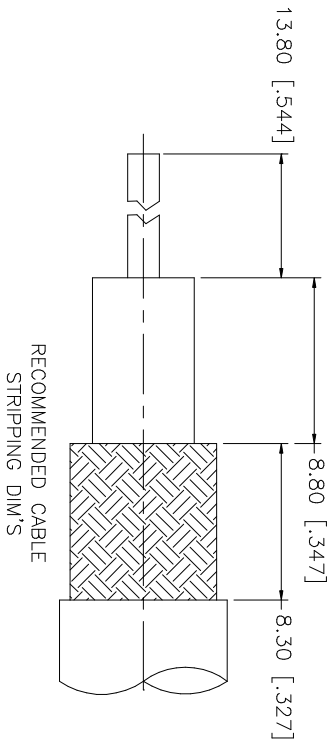


REV.	DATE	DESCRIPTION
NC	04/14/03	INITIAL RELEASE



- NOTE:
1. CRIMPED FERRULE  
HEX CRIMP SIZE .429"
  2. CRIMPED CONTACT PIN  
HEX CRIMP SIZE 118"

QTY	FINISH	MATERIAL	DESCRIPTION
1	NICKEL	COPPER	FERRULE
1	GOLD	BRASS	CONTACT PIN
1	YELLOW	PHENOLIC	INSULATOR
1	NICKEL	BRASS	BODY
			DESCRIPTION

APPROVALS	DATE
DRAWN G.R.S.	04/14/03
CHECKED	
ISSUED	
SHEET 1 OF 1	

DO NOT SCALE DRAWING	QTY	FINISH	MATERIAL	DESCRIPTION
UNLESS OTHERWISE SPECIFIED DIMENSIONS ARE IN MILLIMETERS, DIMENSIONS IN [ ] ARE IN INCHES AND FOR CUSTOMER REFERENCE ONLY.				
UNLESS OTHERWISE SPECIFIED TOLERANCES FOR MILLIMETERS ARE:				
0.5 - 8mm ± 0.20mm				
8 - 30mm ± 0.40mm				
30 - 120mm ± 0.50mm				
UNLESS OTHERWISE SPECIFIED TOLERANCES FOR INCHES ARE:				
.020 - .315 = ± 0.007"				
.315 - 1.180 = ± 0.015"				
1.180 - 4.724 = ± 0.020"				

APPENHOL CONNEX	UHF CRIMP PLUG
(FOR BELDEN 8214, 9913, 9914, LMR400 CABLE)	
PART NO. 182130	

DWG. NO.	REV.	NC	SIZE	SCALE
182130.DWG	NC		A	NA