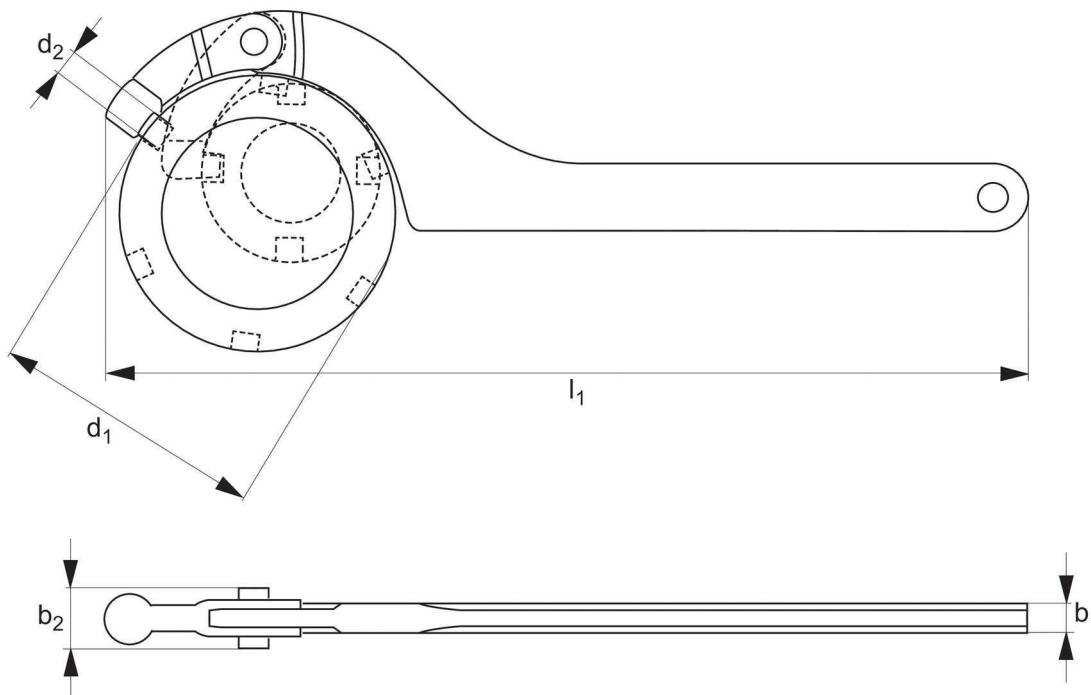


Hook Spanners, With Pin Nose - Long Version

hinge type



95152



Material


Steel C35/C45, edgewise ground, hardened and blue finish tempered.

Technical Notes

For round nuts with set pin holes inside to DIN 1816.
'x' is preferred size, with improved stock holding.
Rounded edges for better handling.
Sizes 16 - 22 without retaining ring.

Tips

Longer shaft permits higher torque.

Order No.	Finish	d_1 Nut dia. min. - max.	d_2	l_1	b_1	b_2	 g
95152.W0122	Blackened	16-22	2,5	135	3	7,5	50
95152.W0135	Blackened	22-35	3,0	165	4	10,5	85
95152.W0160	Blackened	35-60	4,0	205	5	12,5	170
95152.W0190	Blackened	60-90	5,0 x	280	6	14,5	380
95152.W0191	Blackened	60-90	6,0	280	6	14,5	380
95152.W0255	Blackened	95-155	6,0 x	335	7	17,5	610
95152.W0256	Blackened	95-155	8,0	335	7	17,5	610
95152.W0330	Blackened	165-230	8,0	460	8	17,5	1200
95152.W0331	Blackened	165-230	10,0 x	460	8	17,5	1200
95152.W0622	Nickel Plated	16-22	2,5	135	3	7,5	50
95152.W0635	Nickel Plated	22-35	3,0	165	4	10,5	85
95152.W0660	Nickel Plated	35-60	4,0	205	5	12,5	170
95152.W0690	Nickel Plated	60-90	6,0	280	6	14,5	380
95152.W0755	Nickel Plated	95-155	6,0	335	7	17,5	610
95152.W0830	Nickel Plated	165-230	10,0	460	8	17,5	1200



We specialise in the non-standard, supplying a range of DIN hand tools for tooling; from socket wrenches to hook spanners, pin spanners to drill drifts and beyond. These parts have various applications for DIN and other standard nuts and tooling, the following pages cross reference the suitability of our hand tools to specific DIN sizings.

Hook wrenches

Hook wrenches DIN 1810A 95400



Size	DIN 1804	DIN 981	DIN 981	DIN 981	DIN 981	DIN 70852	DIN 11851-F
	M	M	KM	KML	KMT	M	DN
12 - 14	-	-	-	-	-	-	-
16 - 20	6 8	-	-	-	-	10	-
25 - 28	10 12	15 17	2 3	-	0	16	-
30 - 32	14 16	20	4	-	1	18 20	-
34 - 36	18 20	-	-	-	-	22	-
38 - 45	26	25 30	5 6	-	-	24	10 15
40 - 42	22 24	-	-	-	4	26 28	-
45 - 50	26 28 - 30	30	6	-	-	35	-
52 - 55	32 35	35	7	-	-	-	20
58 - 62	38 40 - 42	40	8	-	-	45	25
65 - 70	-	45 50	9 10	-	9	48 52	32
68 - 75	45 48 - 50	55	11	-	10	50 55	-
80 - 90	52 - 55 58 - 60	60	12	-	12	60 70	-
85 - 92	-	65 70	13 14	-	-	65	50
95 - 100	62 - 65 68 - 70	-	-	-	13 14	75 80	-
98 - 105	-	75 80	15 16	-	15	-	-
110 - 115	72 - 75 80	85	17	-	16	-	65
120 - 130	85 90	90 100	18 20	-	17 19	- 105	-
135 - 145	95 100	110 120	22	-	20 22	- 115	-
155 - 165	105 - 110 115 - 120	120 - 130 130 - 140	24 26	26 28	24 26	125 135	-
180 - 195	125 - 130 140	140 - 150 150	28 30	30	-	150	-
205 - 220	150 160	- 170 - 190	- 34	- 38	34	175 180	-
230 - 245	170 180	180	36	-	-	190	-

Size	DIN 981		DIN 981				
	TR	HM					
280 - 300	-	220 x 4 240 x 4	44 T 48 T	-	-	-	-
300 - 320	-	240 x 4 250 x 4	48 T 50 T	-	-	-	-
320 - 345	-	250 x 4	50 T	-	-	-	-
350 - 375	-	-	-	-	-	-	-
380 - 400	-	-	-	-	-	-	-
480 - 500	-	-	-	-	-	-	-

Wixroyd's Range of Industrial Hand Tools



Size	95100						
	DIN 1804	DIN 981	DIN 981	DIN 981	KMT	DIN 70852	DIN 11851-F
	M	M	KM	KML		M	DN
20 - 35	8 - 18	12 - 20	1 - 4	-	0 - 2	10 - 20	-
35 - 60	20 - 38	25 - 40	5 - 8	-	3 - 7	22 - 42	10 - 20
60 - 90	40 - 60	45 - 65	9 - 13	-	8 - 12	42 - 70	25 - 40
90 - 155	58 - 110	70 - 130	14 - 24	24, 26	13 - 24	70 - 125	50 - 100
155 - 230	105 - 170	120 - 190	24 - 36	26 - 38	24 - 38	125 - 190	125 - 150

Hook wrenches



Nut DIN 1816 Thread Size	95450	
	Use 95450 with d1 nut dia. min.-max.	Use 95151/95152 with d1 nut dia. min.-max.
6	16 - 18	16 - 22
8	20 - 22	
10	25 - 28	
12		22 - 35
14	30 - 32	
16		
18	34 - 36	
20		
22	40 - 42	
24		
26		
28	45 - 50	35 - 60
30		
32	52 - 55	
35		
38		
40	58 - 62	
42		
45		
48	68 - 75	
50		60 - 90
52		
55		
58	80 - 90	
60		
62		
65	95 - 100	
68		
70		
72		
75	110 - 115	
80		95 - 155
85	120 - 130	
90		
95	135 - 145	
100		
105		
110		
115	155 - 165	
120		
125		
130	180 - 195	
140		165 - 230
150		
160	205 - 220	
170		
180	230 - 245	-
190		-
200	260 - 270	-

Hook wrenches DIN 1810

