

RES20F10**Rev. 0****CHARACTERISTICS:**

Rated Voltage:	250VAC max
Rated Current at Ambient:	10A @ 40°C
Operating Frequency:	DC-400HZ
Climatic Class (IEC60068-1):	25/100/21
Temperature Range:	-25°C to +100°C
Over load Current:	1.5 x Rated Ct. for 1 Min

Operational Leakage current : (at 230VAC/50Hz and Total C +/-20%)	0.74 mA max
---	-------------

Worst case Leakage current : (N interrupted and Total C +/-20%)	<1.11 mA max
---	--------------

DCR @ 25°C (+/-25%) :	45 mΩ
-----------------------	-------

Test Voltage (100%) for 2 sec:-	L-N:	1100VDC
	L-GND:	3000VDC

Ingress Protection:	IP 20
---------------------	-------

Weight (Approximate):	85 gr
-----------------------	-------

FILTER PARAMETERS:

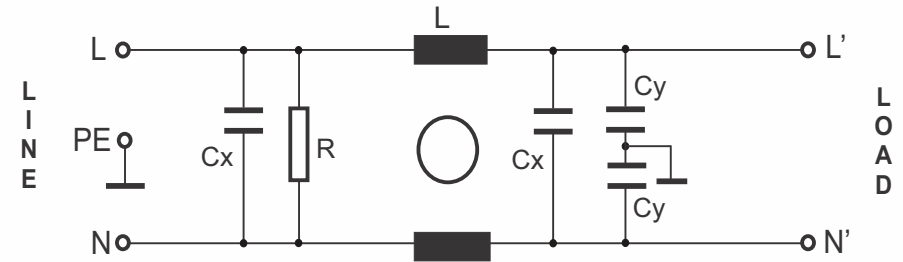
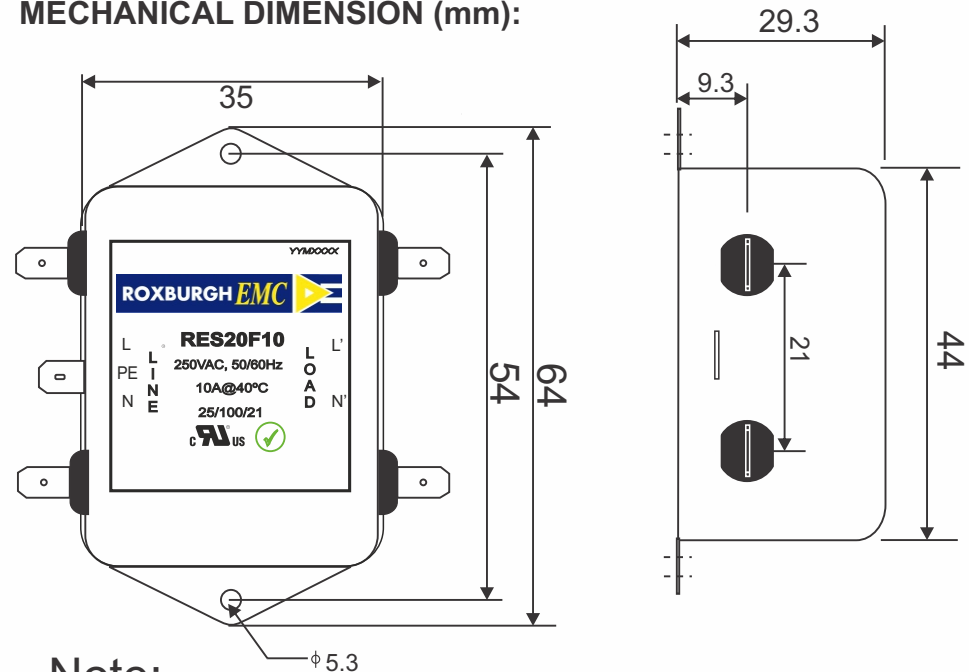
Total Inductance (L-L'+N-N') @10KHz:	0.8mH +50%,-30%
Total Capacitance (L-L/L-N) @1KHz:	0.3μF +/- -20%
Total Capacitance (L/N-GND) @1KHz:	9.4nF +/- -20%
Total Resistance (L-L/L-N):	1MΩ +/- -10%
Total Resistance (L/N-GND):	

APPROVALS:

REACH
RoHS
UL



APPROVED
BY
AJAY
Date: 4-04-2014

CIRCUIT DIAGRAM:**MECHANICAL DIMENSION (mm):****Note:**

Housing matl. Fe with Ni Plated
Fast-On Terminal (6.3 x 0.8mm)
Connections

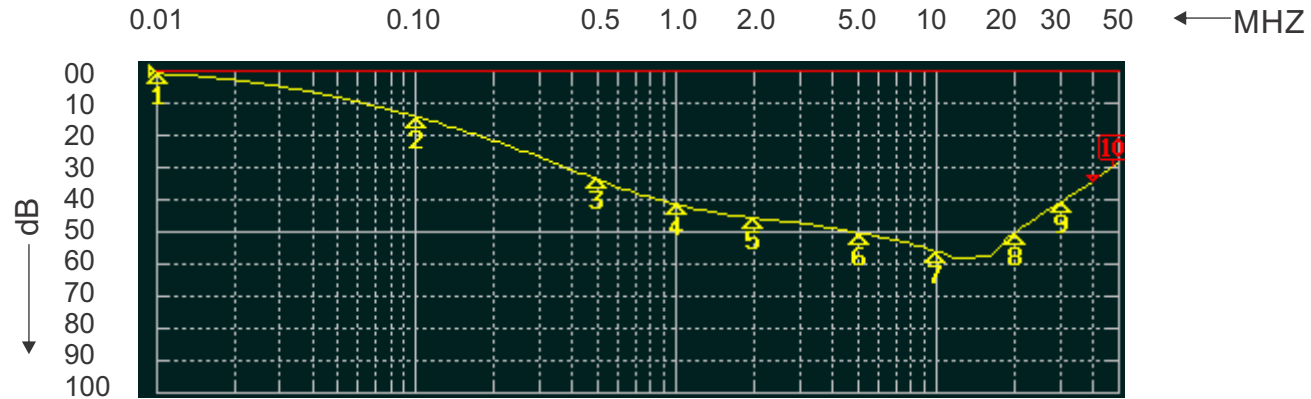
TOLERANCE: +/-1.0 mm



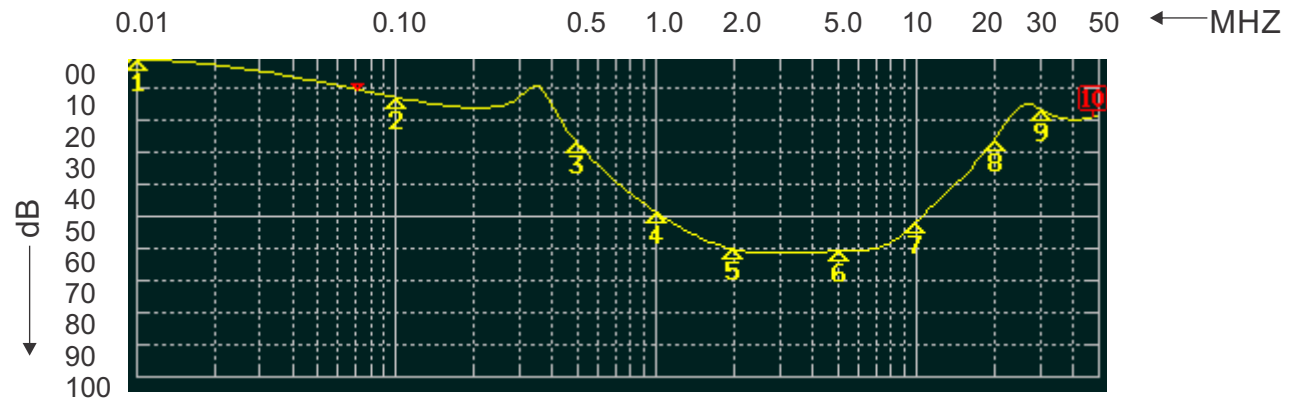
ROXBURGH EMC

FILTER INSERTION LOSS CHARACTERISTICS CISPR 17 - 50 OHM METHOD

RES20F10



COMMON MODE



DIFFERENTIAL MODE

