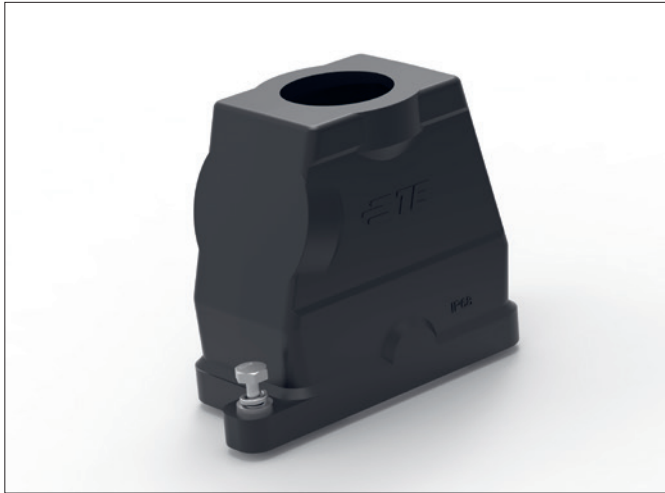


HDC IP68 Anti-corrosion Hoods & Housing



TE Connectivity's HDC IP68 Anti-corrosion Hoods & Housing, made of die casted aluminum alloy, provide protection against environmental and electro-chemical contact corrosion. The stainless steel locking system, compliant to the leading brands already used in the field, offers excellent vibration and shock resistance. The HDC Hoods and Housing also protect the connections in harsh environment and industrial applications, where long-term operations could be in jeopardy due to environmental influences like: humidity, salt, detergents, fertilizers, UV exposure, temperature shocks and vibrations. The hoods and housings have been confirmed to be anti-corrosion resistant for 500 hours of salt spray.

KEY FEATURES

- Pressure tight Hoods/Housing
- Highly EMC resistant
- M6 Screw locking
- IP68

BENEFITS

- Anti-corrosion resistant confirmed by 500 hours Salt spray test, that protects the connection in a harsh environment
- Robust design, vibration resistance

PART NUMBERS

Refer to the HDC catalogue to find the complete range of hoods and housing

Description	Category	Part Number
H10BPR Hood, Diagonal Locking, Side/Top Entry 2M32, Powder Coated, Black	Hoods	T1900100232-009
H10BPR Hood, Center Locking, Side/Top Entry 2M25, Powder Coated, Black	Hoods	T1902100225-009
H16BPR Hood, Center Locking, Top Entry M40, Side Entry M25, Powder Coated, Black	Hoods	T1902164025-109
H6BPR Hood, Diagonal Locking, Side Entry M25, Powder Coated, Black	Hoods	T1910060125-009
H10BPR Hood, Diagonal Locking, Side Entry M25, Powder Coated, Black	Hoods	T1910100125-009
H16BPR Hood, Diagonal Locking, Side Entry M32, Powder Coated, Black	Hoods	T1910160132-009

APPLICATIONS

- **Rail:** outdoor (on the roof, sub-systems, intervehicle), washing facilities for rail vehicles
- **Wind Energy:** wind-turbine-brakes, blade adjustment (pitch drive)
- **Industrial transportation:** construction machinery, mining equipment
- **Machinery:** modules exposed to detergents (e.g. sensor wiring on packing machines for the food industry)

ELECTRICAL

- EN 62153-4-7: Electromagnetic compatibility (EMC)

MECHANICAL

- EN 61984
- EN 61373

MATERIALS

- Material (hoods/housing): Aluminum die-cast, corrosion resistant
- Surface (hoods/housing): powder-coated
- Color (hoods/housing): black
- Material (seal): NBR
- Material (screwing): stainless steel

STANDARDS & SPECIFICATIONS

- IEC 61984/EN 61984
- 108-137191

ENVIRONMENTAL

- EN 60512
- EN 60529

PRODUCT COMPLIANCE / APPROVALS

- Compliance RoHS

HDC IP68 Anti-corrosion Hoods & Housing

PART NUMBERS (CONTINUED)

Description	Category	Part Number
H24BPR Hood, Diagonal Locking, Side Entry M40, Powder Coated, Black	Hoods	T1910240140-009
H6BPR Hood, Center Locking, Side Entry M20, Powder Coated, Black	Hoods	T1912060120-009
H10BPR Hood, Center Locking, Side Entry M25, Powder Coated, Black	Hoods	T1912100125-009
H16BPR Hood, Center Locking, Side Entry M32, Powder Coated, Black	Hoods	T1912160132-009
H24BPR Hood, Center Locking, Side Entry M32, Powder Coated, Black	Hoods	T1912240132-009
H24BPR Hood, Center Locking, Side Entry M40, Powder Coated, Black	Hoods	T1912240140-009
H3APR Hood, Diagonal Toggle Locking, Top Entry Pg13.5, Powder Coated, Black	Hoods	T1920030113-009
H6BPR Hood, Diagonal Locking, Top Entry M32, Powder Coated, Black	Hoods	T1920060132-009
H10BPR Hood, Diagonal Locking, Top Entry M40, Powder Coated, Black	Hoods	T1920100140-009
H16BPR Hood, Diagonal Locking, Top Entry M32, Powder Coated, Black	Hoods	T1920160132-009
H24BPR Hood, Diagonal Locking, Top Entry M32, Powder Coated, Black	Hoods	T1920240132-009
H24BPR Hood, Diagonal Locking, Top Entry 3M25, Powder Coated, Black	Hoods	T1920240325-009
H6BPR Hood, Center Locking, Top Entry M32, Powder Coated, Black	Hoods	T1922060132-009
H10BPR Hood, Center Locking, Top Entry Pg16, Powder Coated, Black	Hoods	T1922100116-009
H10BPR Hood, Center Locking, Top Entry M32, Powder Coated, Black	Hoods	T1922100132-009
H16BPR Hood, Center Locking, Top Entry M32, Powder Coated, Black	Hoods	T1922160132-009
H24BPR Hood, Center Locking, Top Entry M40, Powder Coated, Black	Hoods	T1922240140-009
H3APR Hood, Diagonal Inner-Hex Screw Locking, Top Entry Pg16, Powder Coated, Black	Hoods	T1927030116-009
H3APR Housing, Diagonal Toggle Locking, Bulkhead Mounted, Powder Coated, Black	Housing	T1930030000-009
H6BPR Housing, Diagonal Locking, Bulkhead Mounted, Powder Coated, Black	Housing	T1930060000-009
H10BPR Housing, Diagonal Locking, Bulkhead Mounted, Powder Coated, Black	Housing	T1930100000-009
H16BPR Housing, Diagonal Locking, Bulkhead Mounted, Powder Coated, Black	Housing	T1930160000-009
H24BPR Housing, Diagonal Locking, Bulkhead Mounted, Powder Coated, Black	Housing	T1930240000-009
H6BPR Housing, Center Locking, Bulkhead Mounted, Powder Coated, Black	Housing	T1932060000-009
H10BPR Housing, Center Locking, Bulkhead Mounted, Powder Coated, Black	Housing	T1932100000-009
H16BPR Housing, Center Locking, Bulkhead Mounted, Powder Coated, Black	Housing	T1932160000-009
H16BPR Housing, Center Locking, Surface Mounted, Powder Coated, Black	Housing	T1932160001-009
H24BPR Housing, Center Locking, Bulkhead Mounted, Powder Coated, Black	Housing	T1932240000-009
H3APR Housing, Diagonal Inner-Hex Screw Locking, Bulkhead Mounted, Powder Coated, Black	Housing	T1937030000-009
H10BPR Housing, Diagonal Locking, Surface Mounted, Side Entry M32, Powder Coated, Black	Housing	T1950100132-009
H6BPR Housing Metal Protection Cover, Diagonal Locking, Nylon Rope, Powder Coated, Black	Covers	T1990060000-009
H10BPR Housing Metal Protection Cover, Diagonal Locking, Nylon Rope, Powder Coated, Black	Covers	T1990100000-009
H16BPR Housing Metal Protection Cover, Diagonal Locking, Nylon Rope, Powder Coated, Black	Covers	T1990160000-009
H24BPR Housing Metal Protection Cover, Diagonal Locking, Nylon Rope, Powder Coated, Black	Covers	T1990240000-009

The partnumbers showing are a representation of our complete portfolio. Please visit our website to see all our connector solutions.

te.com/hdc

TE Connectivity, TE Connectivity (logo) and Every Connection Counts are trademarks. All other logos, products and/or company names referred to herein might be trademarks of their respective owners.

The information given herein, including drawings, illustrations and schematics which are intended for illustration purposes only, is believed to be reliable. However, TE Connectivity makes no warranties as to its accuracy or completeness and disclaims any liability in connection with its use. TE Connectivity's obligations shall only be as set forth in TE Connectivity's Standard Terms and Conditions of Sale for this product and in no case will TE Connectivity be liable for any incidental, indirect or consequential damages arising out of the sale, resale, use or misuse of the product. Users of TE Connectivity products should make their own evaluation to determine the suitability of each such product for the specific application.

© 2017 TE Connectivity Ltd. family of companies All Rights Reserved.

1-1773909-1 02/2017 Original: WR

PRODUCT SHEET

TE Connectivity Automation & Control

Pfnorstr. 1
D-64293 Darmstadt
Germany

+49 6151 607 1999

www.te.com

LEGAL ENTITY