

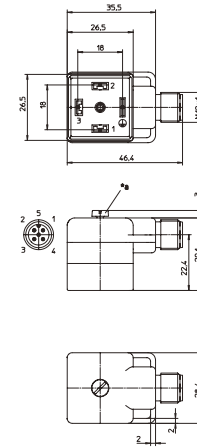
DIN Valve Adapters

VAD 3C-4-1 | VAD 1A...M12



DIN Valve Adapter with M12 Connection
 Connector for pressure switches according to DIN EN 175301-803, form A, with LED operation and function indicator, with M12 male receptacle connect.

VAD 3C-4-1

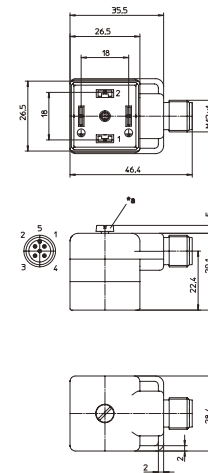


*a M3 screw



DIN Valve Adapter with M12 Connection
 Valve adaptor according to DIN EN 175301-803, form A, with LED function indicator, varistor voltage protection, connected protective earth, with M12 male receptacle connector.

VAD 1A...M12

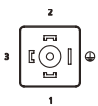


*a M3 screw

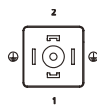
Pin Assignments

Face Views

VAD 3C-4-1-M12-5

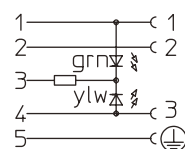


VAD 1A-1-3-M12-5

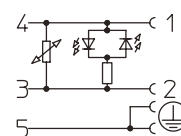


Wiring Diagram

VAD 3C-4-1-M12-5



VAD 1A-1-3-M12-5



Be Certain with Belden

DIN Valve Adapters

VAD 3C-4-1 | VAD 1A...M12

Technical Data

Environmental

Degree of protection IP 67 / NEMA 6P
 Operating temperature range -25°C (-13°F) / +80°C (+176°F)

Mechanical

Housing / Molded body VAD: TPU, self-extinguishing
 M12: CuZn, nickel-plated
 Insert VAD: PBT
 M12: PA
 Contact VAD: CuZn, pre-nickeled and tin-plated
 M12: CuZn, pre-nickeled and 0.8 microns gold-plated

Electrical

Contact resistance $\leq 5 \text{ m}\Omega$
 Nominal current at 40°C 4 A
 Nominal voltage VAD 1A: 24 V
 VAD 3C: 24 V DC
 Rated voltage 32 V
 Insulation resistance $> 10^9 \Omega$
 Pollution degree 3

Varistor data

Nominal voltage 47 V at 0.1 mA
 typ. limiting voltage 110 V at 5 A
 max. pulse energy (standard impulse 10/1000us) 0.9 Ws
 max. continuous power loss 0.01 W

Accessories (incl.)

Attachable label
 Screw (fitted)

Part Number	Order Number	Pins	Characteristics
VAD 3C-4-1-M12-5	46568	2 + 	 
VAD 1A-1-3-M12-5	12141	2 + 	 

Mouser Electronics

Authorized Distributor

Click to View Pricing, Inventory, Delivery & Lifecycle Information:

[Lumberg Automation:](#)

[VAD 1A-1-3-M12-5](#) [VAD 3C-4-1-M12-5](#)