

## Green Line Lasermodule

LD532-50-24(40x210)-G

Order Number: 70115628

Main Parameters (*)	min	typ	max	Unit
Wavelength		532		nm
Optical Output Power		50		mW
Operating Voltage	21.6	24	26.4	V DC
Operating Current	50	100	150	mA
Operating Temperature	15		30	°C
Storage Temperature	-40		80	°C

### Optical Parameters

Beam Shape	Line
Laser Class	2M
Divergence	0.5mrad
Fan Angle	90°
Line Thickness	<3mm@7m
Operating Distance	30m
Optics	glass lens AR coated
Beam Mode	TEM00
Laser technology	Solid State (YVO4+KTP)
Stability	+/- 20% @ 15-30°C
Focus	fixed (7.0m)
Warm up time	<15min

### Technical Parameters

Lifetime	>10000h
RoHS	yes

### Electrical Parameters

Potential of Housing	isolated
----------------------	----------

### Mechanical Parameters

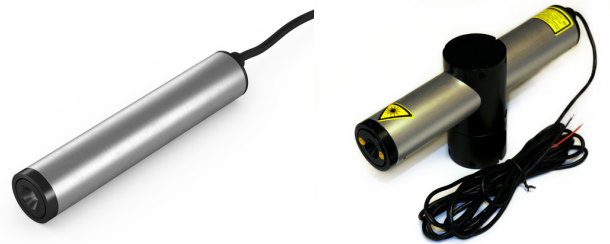
Size	Ø40x210mm
Material	aluminium
Cable length	3000mm
Wire type	18AWG, black, 3,6mm
Output Aperture	8mm
Housing Color	silver
Weight	750g
Protection Class	IP64
Stripping of wire	5mm
Stripping of cable cover	50mm

(\*) Over the complete operating temperature range



### Features

- Operating Voltage 24V DC
- Glas lenses anti reflex coated
- Laser Class 2M
- Operating Voltage 24V DC
- Uniform line thickness

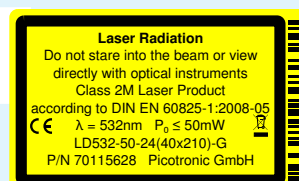
### Picture



### Cable Colors

Ground		black	GND
Positive		red	21.6 - 26.4, typ 24V DC

### Safety Label



### Revision

REV 7 | 28-SEP-2015