

## Category 6 Connection Boxes



### **Category 6 Connection Boxes (S78Wh+S78Bk)**

#### **Features:**

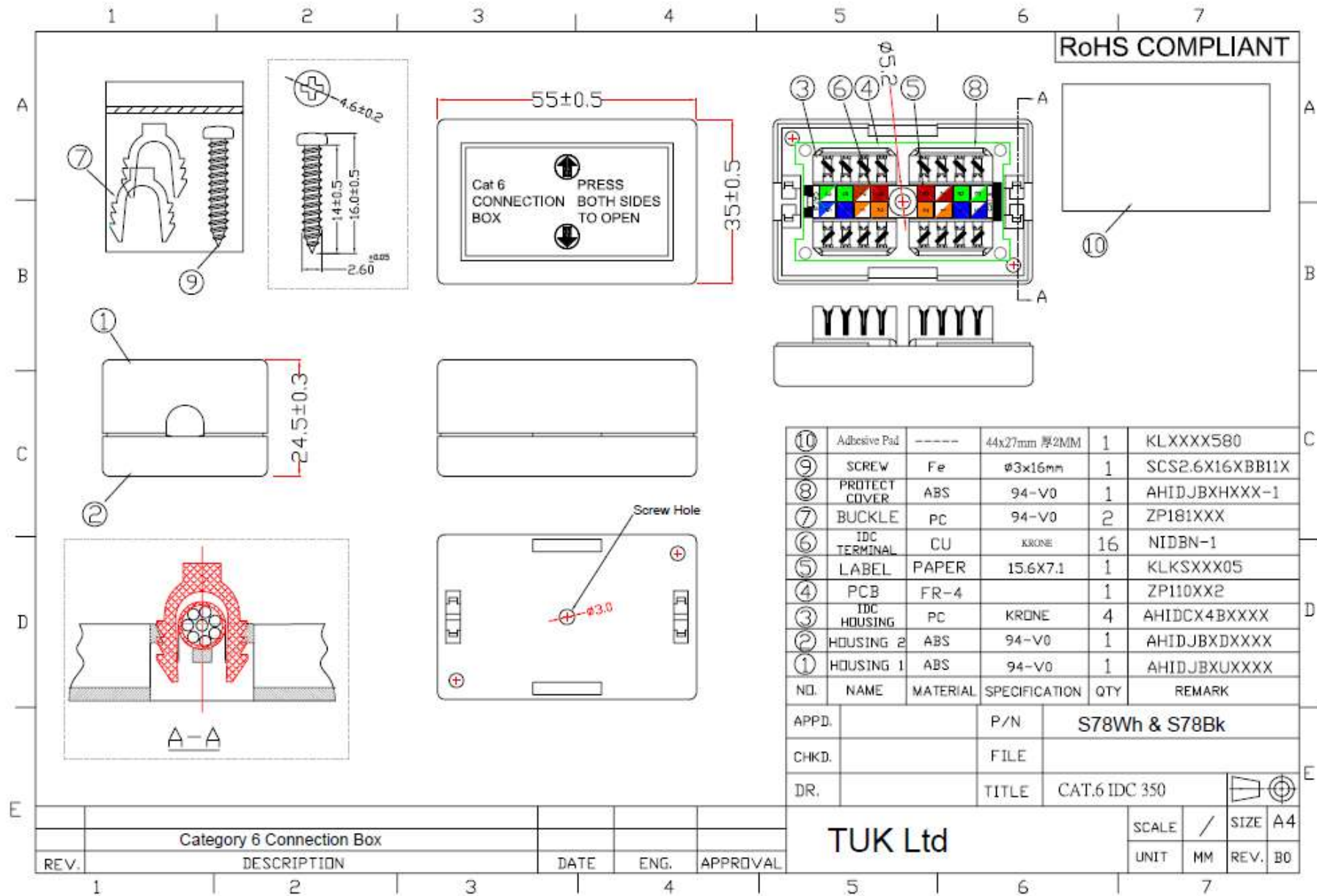
- Full compliance with Category 6 standard performance requirements for a consolidation point
- Quick release lid
- Robust outer casing
- Patented cable retention clip
- Supplied with fixing screws and adhesive pad for optional mounting
- IDC's - industry standard 'Krone LSA+' type suitable for 26 to 24 AWG (0.405 to 0.511mm) solid or stranded cable (with outer diameter 1mm ± 0.05)

#### **Specifications:**

DIMENSIONS (mm): 55 x 35 x 24.5 approx

#### **Materials:**

- Outer casing: ABS
- Contacts: Nickel over copper
- PCB: FR4
- Colour: Black or White



NO.	NAME	MATERIAL	SPECIFICATION	QTY	REMARK
⑩	Adhesive Pad	-----	44x27mm 厚2MM	1	KLXXXX580
⑨	SCREW	Fe	Ø3x16mm	1	SCS2.6X16XB11X
⑧	PROTECT COVER	ABS	94-V0	1	AHIDJBXHXXX-1
⑦	BUCKLE	PC	94-V0	2	ZP181XXX
⑥	IDC TERMINAL	CU	KRONE	16	NIDBN-1
⑤	LABEL	PAPER	15.6X7.1	1	KLKSXXX05
④	PCB	FR-4		1	ZP110XX2
③	IDC HOUSING	PC	KRONE	4	AHIDCX4BXXXX
②	HOUSING 2	ABS	94-V0	1	AHIDJBXDXXXX
①	HOUSING 1	ABS	94-V0	1	AHIDJBXUXXXX

APPD.		P/N	S78Wh & S78Bk	
CHKD.		FILE		
DR.		TITLE	CAT.6 IDC 350	

REV.	DESCRIPTION	DATE	ENG.	APPROVAL
1	Category 6 Connection Box			

TUK Ltd

SCALE	/	SIZE	A4
UNIT	MM	REV.	B0

## Category 6 Connection Box Shielded



### **Category 6 Connection Box Shielded (S78Sv2)**

#### ***Features:***

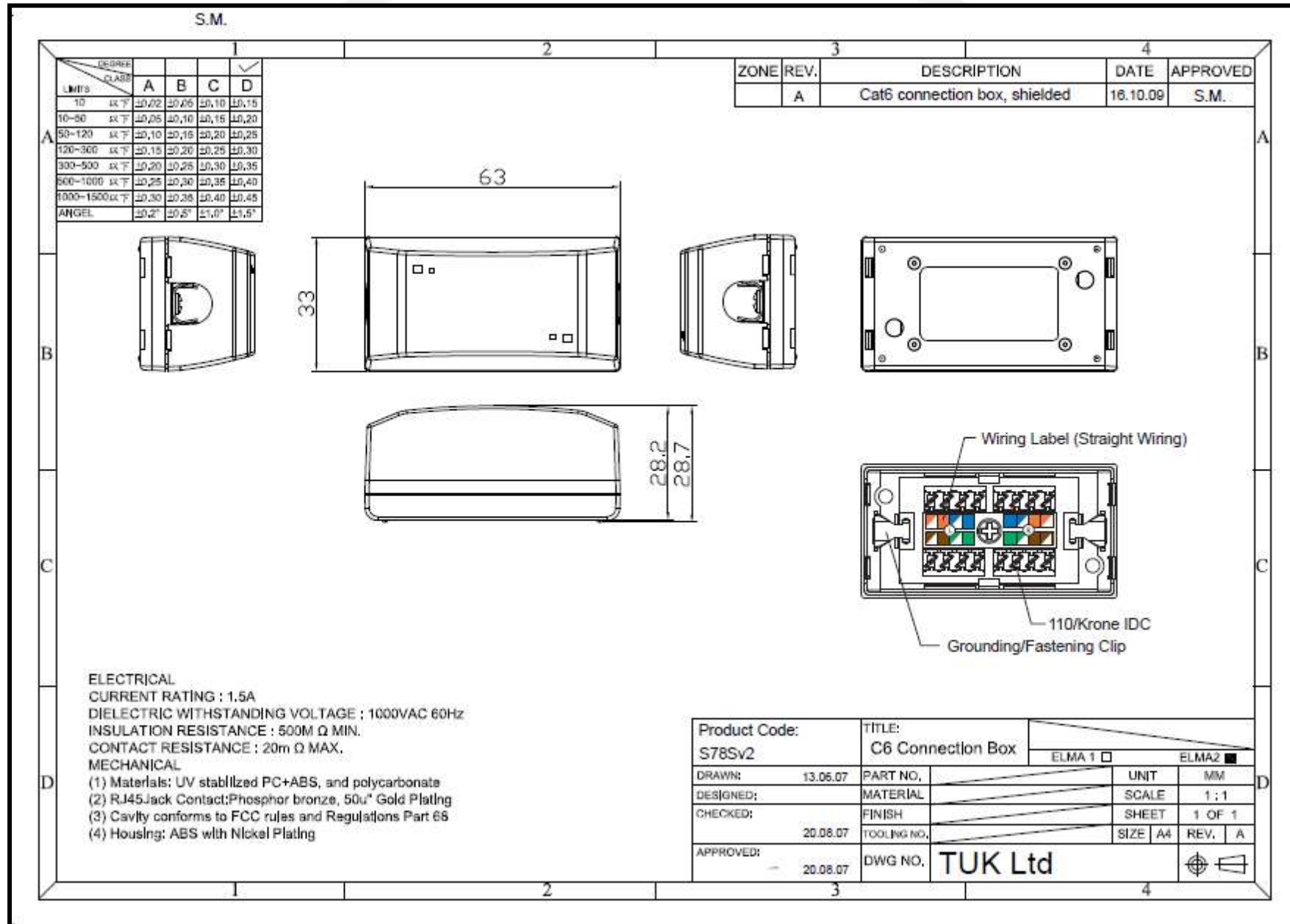
- Full compliance with Category 5e & 6 standard requirements for a consolidation point
- Quick release lid (with use of a screwdriver)
- Robust outer casing
- Supplied with fixing screws and adhesive pad for optional mounting
- IDC's - industry standard 'Krone LSA+' type

#### ***Specifications:***

DIMENSIONS (mm): 63 x 33 x 28.7 approx

#### ***Materials:***

- Outer casing: ABS electroplated
- Contacts: Nickel over copper
- PCB: FR4
- Colour: Silver



TUK Ltd, Unit 4, Wimbledon Stadium Business Centre, Riverside Road, London, SW17 0BA