

- 1
- 2
- 3
- 4
- 5
- 6
- 7
- 8
- 9
- 10
- 11
- 12
- 13
- 14
- 15
- 16
- 17
- 18

PIN

Zinc-plated steel

PAWLS

AISI 304 stainless steel

SPRING

AISI 301 stainless steel.

KNOB

Glass-fibre reinforced polyamide based (PA) technopolymer, black colour, provided with holes for security ring.

PUSH BUTTON

Polyamide based (PA) technopolymer, red colour, glossy finish.

WORKING TEMPERATURE

From -20°C to +80°C.

FEATURES AND APPLICATIONS

GN 114.2 lock pins are generally used for quick fixation or connection of parts to be machined, in particular for elements which need to be removed and reset continuously.

ACCESSORIES

To optimise the use of these lock pins, have been designed:

- ball chains GN 111 (see page 816);
- retaining cables GN 111.2 (see page 817);
- spiral retaining cables GN 111.4 (see page 820).

SPECIAL EXECUTIONS ON REQUEST

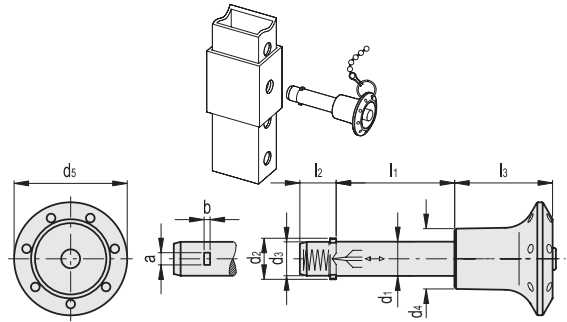
Other dimensions.

INSTRUCTIONS OF USE

By pressing the push button the two pawls are freed and the pin can be pulled-out or inserted.



Application example



Code	Description	d1-0.05	d2	d3	d4	d5	l1+0.4	l2	l3	a	b	Double sided shearing force [kN]		
GN.38715	GN 114.2-6-10	6	7.5 +0.5	5.9	15	30	10	7	21	2.3	0.5	14	10	
GN.38716	GN 114.2-6-16	6	7.5 +0.5	5.9	15	30	16	7	21	2.3	0.5	14	12	
GN.38717	GN 114.2-6-20	6	7.5 +0.5	5.9	15	30	20	7	21	2.3	0.5	14	13	
GN.38718	GN 114.2-6-25	6	7.5 +0.5	5.9	15	30	25	7	21	2.3	0.5	14	15	
GN.38719	GN 114.2-6-30	6	7.5 +0.5	5.9	15	30	30	7	21	2.3	0.5	14	15	
GN.38720	GN 114.2-6-40	6	7.5 +0.5	5.9	15	30	40	7	21	2.3	0.5	14	16	
GN.38721	GN 114.2-8-20	8	10 +0.5	7.9	15	30	20	8.4	21	2.8	1	28	18	
GN.38723	GN 114.2-8-25	8	10 +0.5	7.9	15	30	25	8.4	21	2.8	1	28	19	
GN.38725	GN 114.2-8-30	8	10 +0.5	7.9	15	30	30	8.4	21	2.8	1	28	22	
GN.38727	GN 114.2-8-40	8	10 +0.5	7.9	15	30	40	8.4	21	2.8	1	28	24	
GN.38729	GN 114.2-8-50	8	10 +0.5	7.9	15	30	50	8.4	21	2.8	1	28	28	
GN.38731	GN 114.2-10-20	10	12 +1	9.9	18	34	20	9.8	26	3.3	1	38	27	
GN.38733	GN 114.2-10-25	10	12 +1	9.9	18	34	25	9.8	26	3.3	1	38	30	
GN.38735	GN 114.2-10-30	10	12 +1	9.9	18	34	30	9.8	26	3.3	1	38	31	
GN.38737	GN 114.2-10-40	10	12 +1	9.9	18	34	40	9.8	26	3.3	1	38	37	
GN.38739	GN 114.2-10-50	10	12 +1	9.9	18	34	50	9.8	26	3.3	1	38	42	
GN.38741	GN 114.2-12-25	12	14 +1	11.9	18	34	25	11.3	26	3.8	1	61	39	
GN.38743	GN 114.2-12-30	12	14 +1	11.9	18	34	30	11.3	26	3.8	1	61	43	
GN.38745	GN 114.2-12-40	12	14 +1	11.9	18	34	40	11.3	26	3.8	1	61	50	
GN.38747	GN 114.2-12-50	12	14 +1	11.9	18	34	50	11.3	26	3.8	1	61	60	
GN.38749	GN 114.2-12-60	12	14 +1	11.9	18	34	60	11.3	26	3.8	1	61	62	
GN.38790	GN 114.2-16-30	16	19 +1	15.9	22	40	30	14.2	32	4.3	1.2	113	80	
GN.38791	GN 114.2-16-35	16	19 +1	15.9	22	40	35	14.2	32	4.3	1.2	113	85	
GN.38792	GN 114.2-16-50	16	19 +1	15.9	22	40	50	14.2	32	4.3	1.2	113	110	
GN.38793	GN 114.2-16-60	16	19 +1	15.9	22	40	60	14.2	32	4.3	1.2	113	120	
GN.38794	GN 114.2-16-70	16	19 +1	15.9	22	40	70	14.2	32	4.3	1.2	113	133	
GN.38941	GN 114.2-20-30	20	23 +1	19.8	25	40	30	14.8	33	4.3	1.2	187	120	
GN.38942	GN 114.2-20-35	20	23 +1	19.8	25	40	35	14.8	33	4.3	1.2	187	130	
GN.38943	GN 114.2-20-40	20	23 +1	19.8	25	40	40	14.8	33	4.3	1.2	187	140	
GN.38944	GN 114.2-20-50	20	23 +1	19.8	25	40	50	14.8	33	4.3	1.2	187	160	
GN.38945	GN 114.2-20-60	20	23 +1	19.8	25	40	60	14.8	33	4.3	1.2	187	185	
GN.38946	GN 114.2-20-70	20	23 +1	19.8	25	40	70	14.8	33	4.3	1.2	187	210	
GN.38947	GN 114.2-20-80	20	23 +1	19.8	25	40	80	14.8	33	4.3	1.2	187	230	