

Technical Specifications

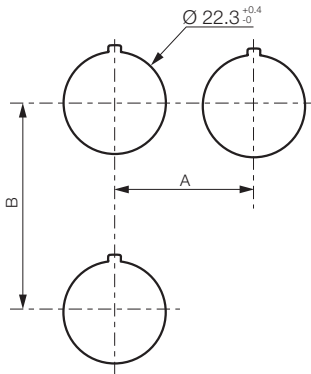
► GENERAL

Characteristics	Data	Standards
► Storage temperature	- 40 °C to + 70 °C	
► Operating temperature	- 25 °C to + 70 °C	
► Climatic resistance	Constant humid heat Cyclic damp heat Resistance to sea air	IEC 60068-2-3 IEC 60068-2-30 IEC 60068-2-52
► Degree of protection	IP 66 for standard heads IP 67 for shrouded heads IP 66 for equipped control stations IP 20 at the rear of the panel for contact blocks and one piece pilot lights Type 1, 2, 3, 3R, 3S, 4, 4X, 12, and 13 for heads and control stations	IEC 60529 NEMA standard
► Protection against mechanical impacts	IK 05 illuminated and non-illuminated heads IK 07 empty control station	IEC 62262
► Electrical insulation	Class II - heads and control station	IEC 60947-5-1
► Terminal marking		IEC 60947-1
► Tightening torques	Locking ring: recommended 3 N.m terminals: max. 1.2 N.m	
► Approvals	UL United states and Canada BV Bureau Véritas Certification OC/CB	UL 508, CSA 22.2 Marine rules IEC 60947-5-1 IEC 60947-5-5 IEC 60947-5-4
► Vibrations	withstand vibration Fc test: 2 to 25 Hz, 1.6 mm; 25-100 Hz, 4 g	IEC 60068-2-6

Technical Specifications

▶ PANEL CUT-OUT

DRILLING

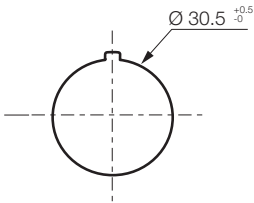


For heads equipped with electrical blocks with screw or plug-in terminals

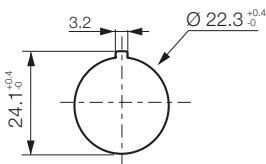
Minimum interval (mm)

	= 30	With or without legend (usual case)
	= 33	IP 67 (silicon shroud)
	= 40	With large legend plate
A	> 40	For mushroom head $\varnothing 40$
	> 45	For selector switch with long handle
	= 38	For super-flush button
	= 50	With 5 position clip
	= 45	With or without legend plate (usual case)
B	= 54	With double touch
	= 77	With double touch + legend plate
	= 50	Joystick

DRILLING FOR SUPER-FLUSH BUTTON

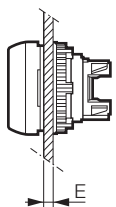


DRILLING WHEN USING THE ANTI-ROTATION RING (OPTIONAL)



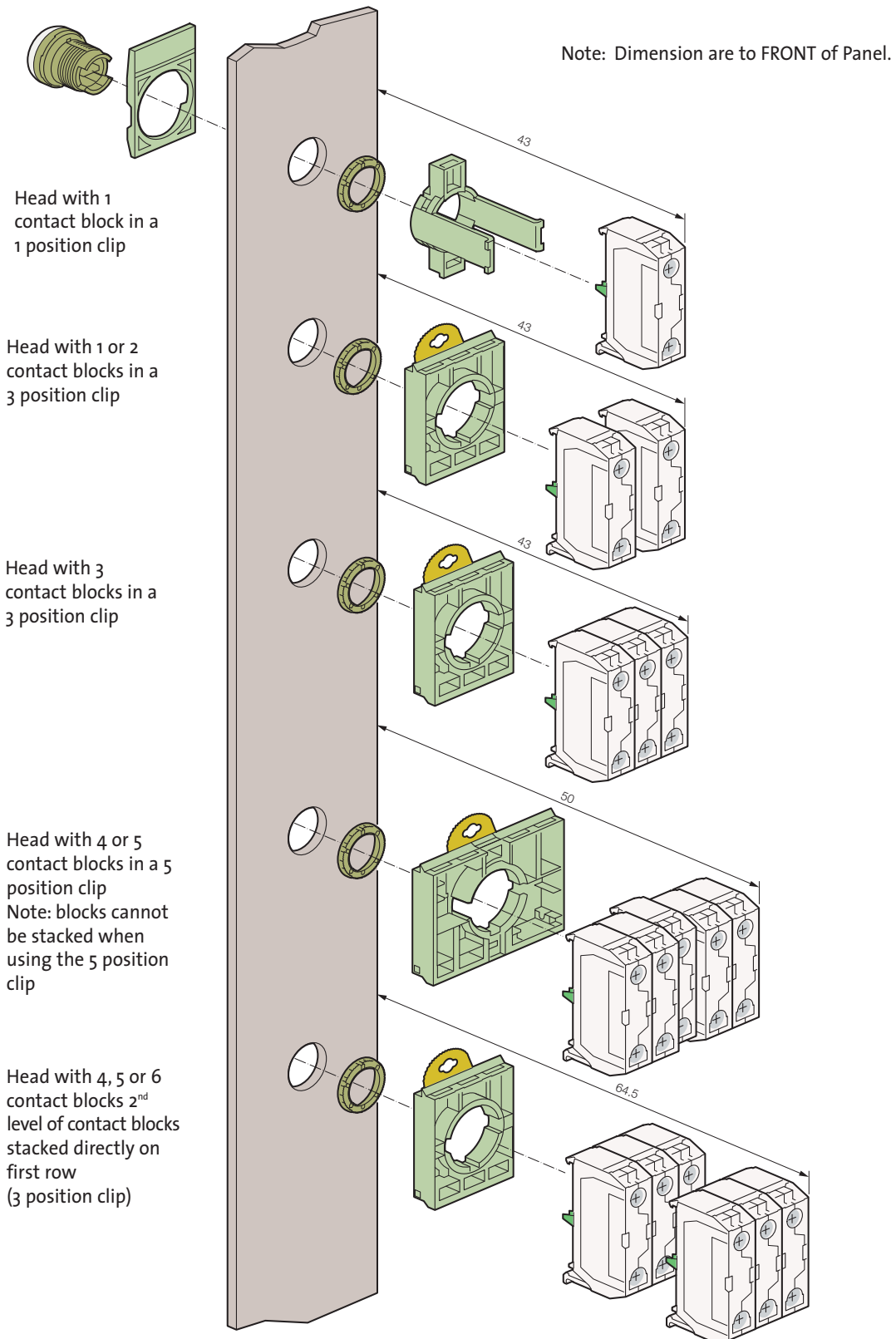
THICKNESS OF PANEL (E)

E = 1 to 6 mm



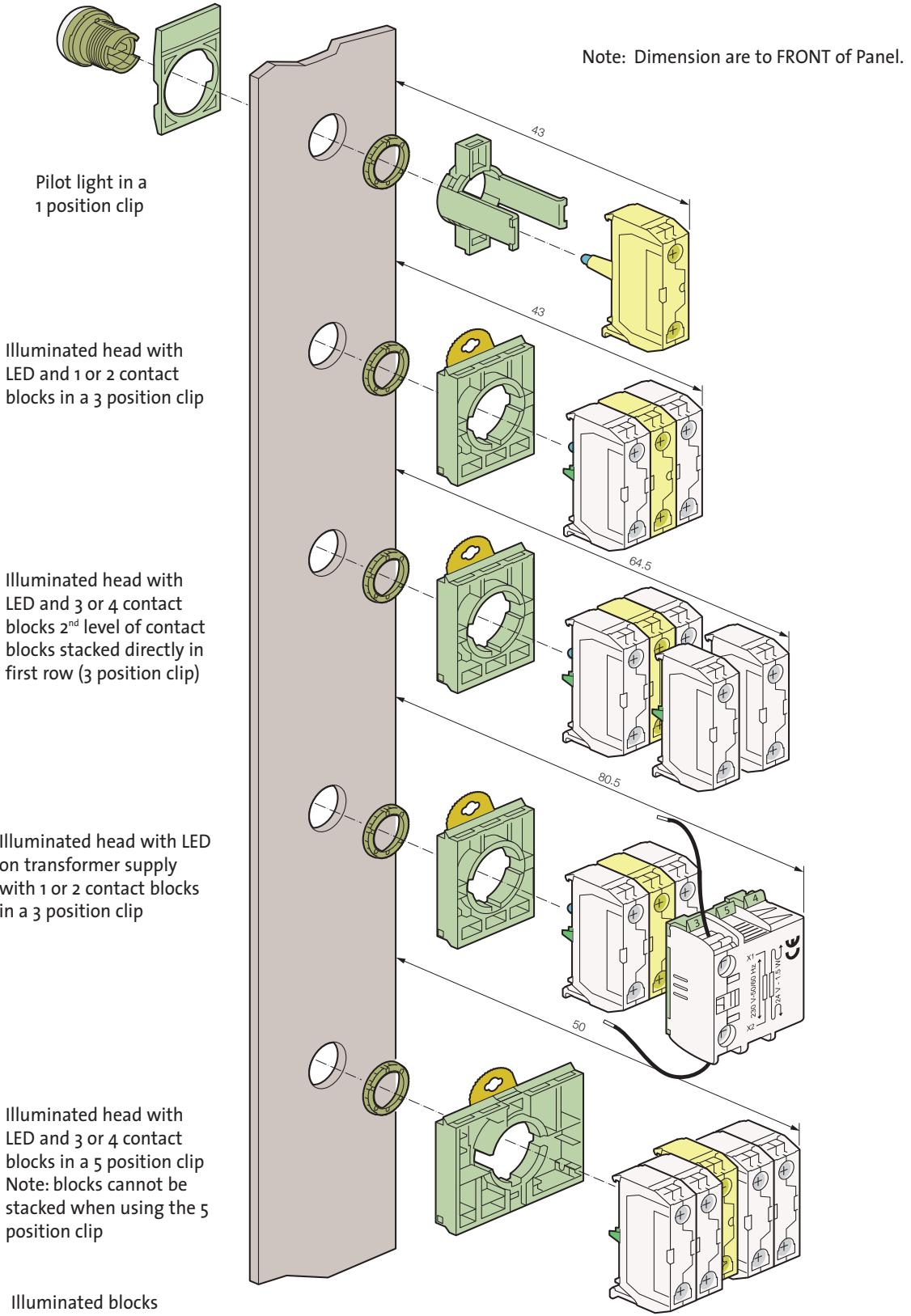
Technical Specifications

NON-ILLUMINATED



Technical Specifications

ILLUMINATED

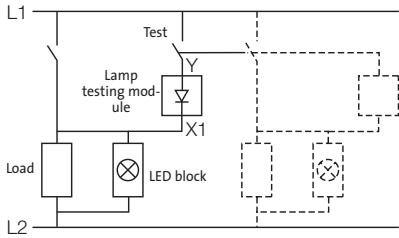


Technical Specifications

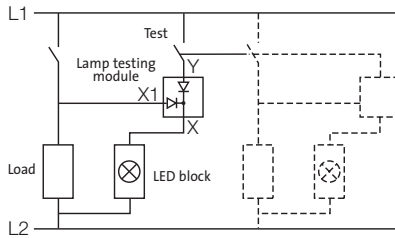
▶ DIAGRAMS

PUSH-TO-TEST LED PILOT LIGHT DIAGRAMS

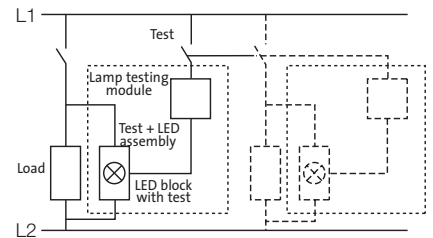
Lamp-testing module with 1 diode (33ET) for direct supply 24 V and 48 V



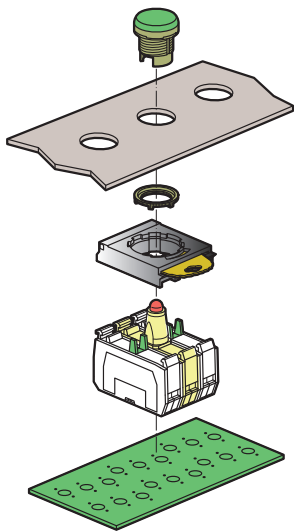
Lamp-testing module with 2 diodes (33ETT) for direct supply 24 V and 48 V



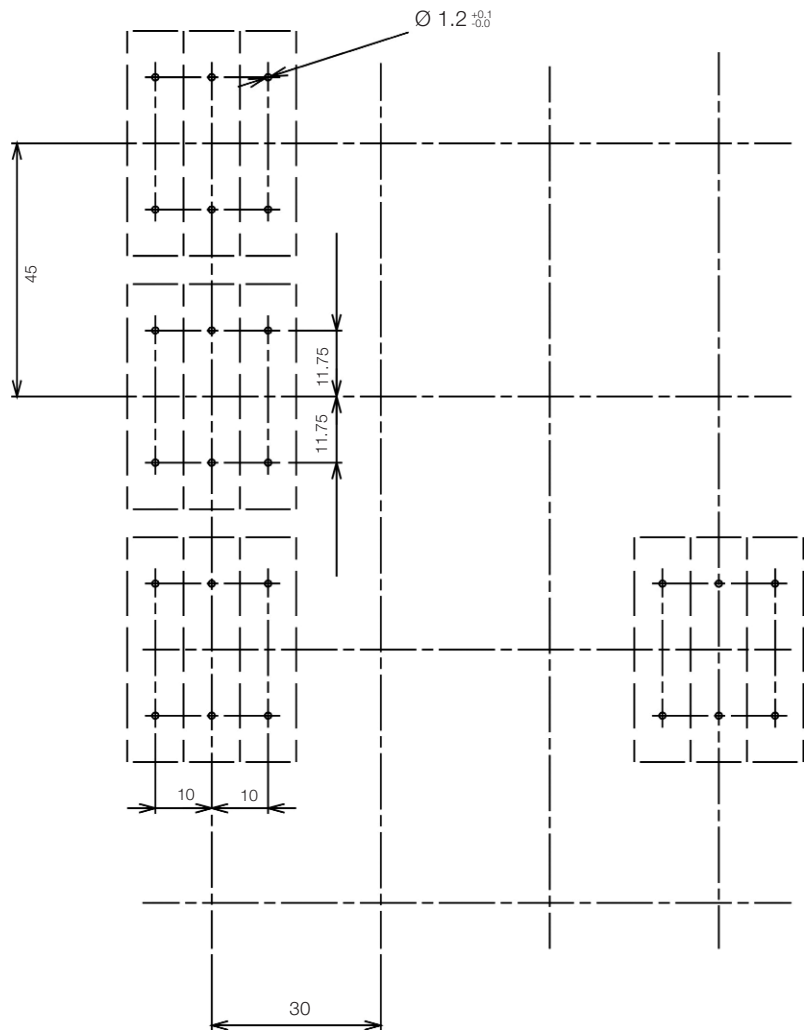
Lamp-testing assembly for direct supply 130 V and 240 V



PRINTED CIRCUIT BOARD MOUNTING



PCB BOARD DRILL PLAN



PCB TERMINAL - SINGLE CLIP

PCB TERMINAL - 3 POSITION CLIP

