



General technical data:

product brand name		SIRIUS
Product component Light source		No
Design of the optical signal		continous light
Type of voltage of the operating voltage		AC/DC
Operating voltage		
• for DC Rated value	V	240 ... 12
• with AC at 50 Hz Rated value	V	12 ... 240
• with AC at 60 Hz Rated value	V	12 ... 240
Equipment marking acc. to DIN EN 61346-2		P

Mechanical data:

Outer diameter of the signal column element	mm	50
---------------------------------------------	----	----

Lamp:

Type of light source		filament lamp / LED
----------------------	--	---------------------

Ambient conditions:

Ambient temperature during operation	°C	-20 ... +60
Protection class IP		IP54
Height	mm	67
Width	mm	52

Certificates/ approvals:

General Product Approval	EMC	Declaration of Conformity	Shipping Approval
--------------------------	-----	---------------------------	-------------------



## Further information

**Information- and Downloadcenter (Catalogs, Brochures,...)**

<http://www.siemens.com/industrial-controls/catalogs>

**Industry Mall (Online ordering system)**

<http://www.siemens.com/industrymall>

**Cax online generator**

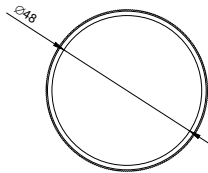
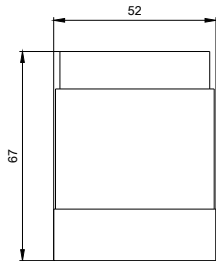
<http://support.automation.siemens.com/WW/CAXorder/default.aspx?lang=en&mlfb=8WD42001AF>

**Service&Support (Manuals, Certificates, Characteristics, FAQs,...)**

<https://support.industry.siemens.com/cs/ww/en/ps/8WD42001AF>

**Image database (product images, 2D dimension drawings, 3D models, device circuit diagrams, EPLAN macros, ...)**

[http://www.automation.siemens.com/bilddb/cax\\_de.aspx?mlfb=8WD42001AF&lang=en](http://www.automation.siemens.com/bilddb/cax_de.aspx?mlfb=8WD42001AF&lang=en)



W8 4444: 8WD42-...\_ALL  
W8 8611:

last modified:

15.01.2015