

Surface chuck (Weldon)

In accordance with ISO 7388-1 (DIN 69871) with resealable cooling duct bores

ORION[®]

Application:

for clamping tools with straight shanks and clamping surfaces in line with DIN 1835 B.

Execution:

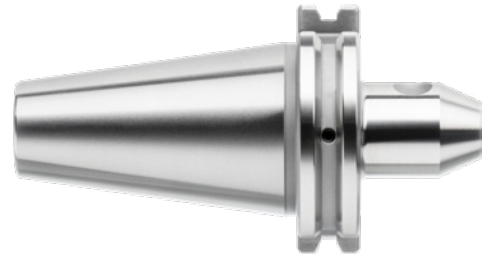
- All tapers and tolerances are precision-ground.
- Taper tolerance AT3.
- Strength HRC 57-60.
- Core strength 1,000-1,200 N/mm².
- KKB= resealable coolant bores

Advantage:

- Prevents the tool from slipping while maintaining high concentricity.

Delivery:

1x surface chuck (Weldon) in accordance with ISO 7388-1 (DIN 69871) with resealable cooling duct bores.



Art. no.	23157 307
Brand	ORION
Manufacturer Part Number	23157307
Tool holding device	SK 40
Clamping diameter	10 mm
Projecting length	50 mm
Outer diameter	35 mm
Coolant supply	KKB
Balancing quality	G 2.5 at 25 rpm
Form	AD/AF
Thread dimension	M10
Gross Weight	1.070 kg
Product Group	2AV

EAN

4053625398270