

SIMATIC IFP1900 FLAT PANEL 19" DISPLAY (16:9), W/O TOUCH, DISPLAY ONLY STANDARD VERSION, MAX 5M, 1366X768 PIXEL, FOR 24V DC, DISPLAYPORT / DVI INTERFACE INCL. DVI-CABLE 1,8M

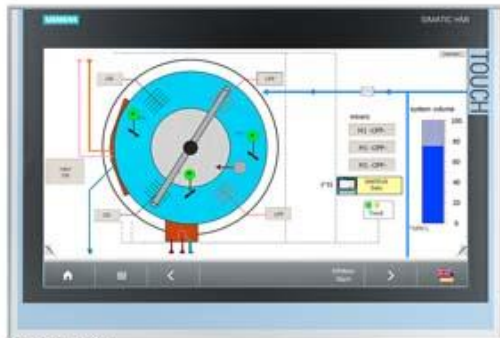


Figure similar

Product type designation

General information

Short designation Flat Panel 19" display

Display

Design of display	TFT widescreen display, LED backlighting
Screen diagonal	18.5 in
Screen diagonal (cm)	47 cm
Display width	409.8 mm
Display height	230.4 mm
Viewing angle	170° x 160°
On Screen Display (OSD) configuration	No; Adjustable by means of software
Number of colors (bit levels)	24 bit
Number of colors	16 777 216
Resolution (pixels)	
• Horizontal image resolution	1 366
• Vertical image resolution	768
• Resolution (WxH in pixel)	1366 x 768
• Pixel size, horizontal	0.3 mm
• Pixel size, vertical	0.3 mm
General features	
• Non-reflective and tempered mineral glass screen	Yes
• Detachable from computer unit	5 m
• Brightness/contrast	300cd/m ² / 1000:1

— Brightness, max.	300 cd/m ²
Backlighting	
• Backlighting (type)	LED
• MTBF backlighting (up to 50%, at 25 °C)	50 000 h; At 25°C
• Dimmable backlight	Yes; 0-100 %
Keyboard	
• Function keys	No
Installation type/mounting	
Built-in unit	Yes; Portrait mode possible
• Permissible angle to the vertical backward (console)	35°
• Permissible angle to the vertical forward (ceiling mounting)	35°
Supply voltage	
Type of supply voltage	DC
Rated value (DC)	24 V
permissible range, lower limit (DC)	19.2 V
permissible range, upper limit (DC)	28.8 V
Power losses	
Power loss DC	
• Typical	40 W
• Maximum	65 W
Interfaces	
Video interfaces	
• DVI-D	Yes
• Display port	Yes; DisplayPort V1.1
Touch interfaces	
• USB	No
Degree and class of protection	
IP65 at front	Yes
Enclosure Type 4 at the front	Yes
NEMA4 at the front	No
NEMA4X at the front	No
IP20 rear	Yes
Standards, approvals, certificates	
CE mark	Yes
KC approval	Yes
cULus	Yes; Corresponds to UL 508
RCM (formerly C-TICK)	Yes
Use in hazardous areas	

• FM Class I Division 2

Yes

Ambient conditions

Ambient temperature in operation

- Min. 0 °C
- max. 45 °C

Storage/transport temperature

- Min. -20 °C
- max. 60 °C

Relative humidity

- Operation, max. 95 %; Non-condensing

Vibrations

- Vibration load in operation 1 gn
- Vibration load during transport/storage 1 gn

Shock testing

- Shock loading in operation 15 gn
- Shock load during transport/storage 15 gn

Mechanics/material

Type of housing (front)

aluminum

- aluminum

Yes

Dimensions

Width of the housing front

483 mm

Height of housing front

337 mm

Mounting cutout, width

465 mm; Tolerance: +1 mm

Mounting cutout, height

319 mm; Tolerance: +1 mm

Device depth

62.5 mm

Weights

Without packaging

5.5 kg

With packaging

6.5 kg

last modified:

12.03.2015