

- 1
- 2
- 3
- 4
- 5
- 6
- 7
- 8
- 9
- 10
- 11
- 12
- 13
- 14
- 15
- RH
-

BODY

Die-cast zinc alloy, black epoxy resin coating, matte finish.

PLUNGER

Zinc-plated steel.

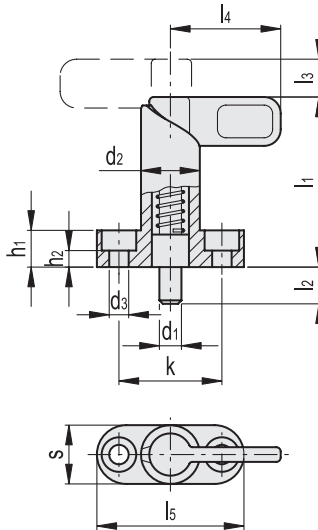
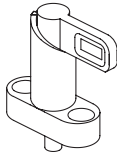
LEVER

High-resilience polyamide based (PA) technopolymer, black colour, matte finish.

FEATURES AND APPLICATIONS

GN 612.10 lever indexing plungers are used when the plunger must be retracted quickly.

By rotating the lifting lever by 180°, a notch keeps the plunger in the retracted position.



Code	Description	d1 +0.1 +0.05											Spring preload [N]	Spring max load [N]			
		d1 -0.05	Mounting hole	d2	d3	h1	h2	k	l1	l2	l3	l4				l5	s
GN.34381	GN 612.10-6-10-16-SW	6	6	16	5.5	10	4.5	28	46	10	10	30	40	16	12	32	53
GN.34383	GN 612.10-8-10-16-SW	8	8	16	5.5	10	4.5	28	46	10	10	30	40	16	12	32	68
GN.34385	GN 612.10-8-12-20-SW	8	8	20	5.5	10	4.5	32	57	12	12	37	45	20	21	58	72
GN.34387	GN 612.10-10-10-16-SW	10	10	16	5.5	10	4.5	28	46	10	10	30	40	16	12	32	119
GN.34389	GN 612.10-10-12-20-SW	10	10	20	5.5	10	4.5	32	57	12	12	37	45	20	21	58	126
GN.34391	GN 612.10-12-12-20-SW	12	12	20	5.5	10	4.5	32	57	12	12	37	45	20	21	58	130