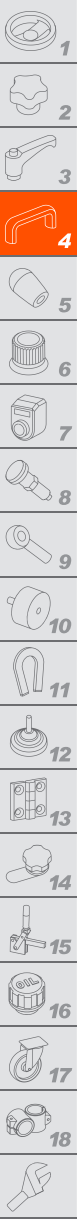


M.843 | Bridge handles

Technopolymer



MATERIAL

High-resilience polyamide based (PA) technopolymer.

STANDARD EXECUTIONS

- **M.843:** in standard colours: black, orange, grey, yellow, light-blue, red, green, glossy finish, brass bosses, threaded holes.
- **M.843-CLEAN:** white colour similar to RAL 9002, glossy finish, AISI 303 stainless steel bosses, threaded holes.

FEATURES

This handle is particularly suitable to be produced in light colours: the glossy finish guarantees perfect cleaning. In particular, M. 843 CLEAN handle, thanks to its white colour and glossy finish, is suitable for applications on medical and hospital equipment and on food processing machines whose parts, for hygienic reasons, must be frequently cleaned. Its solid shape without cavities prevents unhealthy residues from depositing.

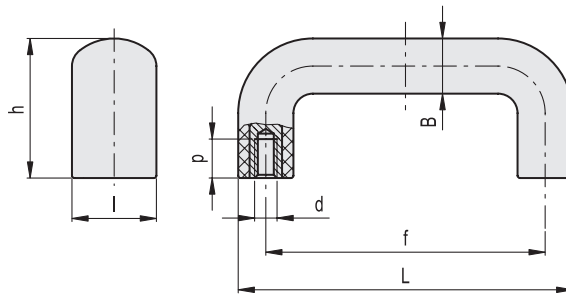
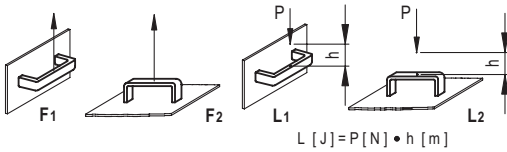
TECHNICAL DATA

Tensile stress and impact strength: the values F1, F2, L1 and L2 indicated in the table were obtained during breaking tests carried out with the appropriate dynamometric equipment under the test conditions shown in the figure with ambient temperature.

The tests have revealed that the special technopolymer used can absorb very strong shocks, with no damages, thanks to its high-resilience.



ELESA Original design



* Complete with colour index, example: 138102 M.843/100 B-M6-C2
 C9 RAL9005 C2 RAL2004 C3 RAL7035 C4 RAL1021 C5 RAL5024 C6 RAL3000 C17 RAL6017

M.843

Code C9	Code C2	Code C3	Code C4	Code C5	Code C6	Code C17	Description	L	f	døH	h	B	l	p	F1 [N]	F2 [N]	L1 [J]	L2 [J]	⚖️
138101	138102	138103	138104	138105	138106	138107	M.843/100 B-M6-*	103	86±0.5	M6	46.5	17	26	12	4000	7000	50	120	52
138121	138122	138123	138124	138125	138126	138127	M.843/140 B-M8-*	138	117±0.5	M8	54	20	30	13	4000	5000	50	120	80
138141	138142	138143	138144	138145	138146	138147	M.843/200 B-M8-*	200	179±1	M8	62	20	30	13	3000	3500	27	80	105
138161	138162	138163	138164	138165	138166	138167	M.843/320 B-M8-*	322	300±1	M8	64	22	32	13	2000	3000	25	75	157

M.843-CLEAN



Code	Description	L	f	døH	h	B	l	p	F1 [N]	F2 [N]	L1 [J]	L2 [J]	⚖️
151406	M.843/100-SST-M6 CLEAN	103	86±0.5	M6	46.5	17	26	12	4000	7000	50	120	52
151412	M.843/140-SST-M8 CLEAN	138	117±0.5	M8	54	20	30	13	4500	5000	50	120	80
151416	M.843/200-SST-M8 CLEAN	200	179±1	M8	62	20	30	13	2000	2400	27	80	105
151419	M.843/320-SST-M8 CLEAN	322	300±1	M8	64	22	32	13	2000	3000	25	75	157

Lift & Pull handles