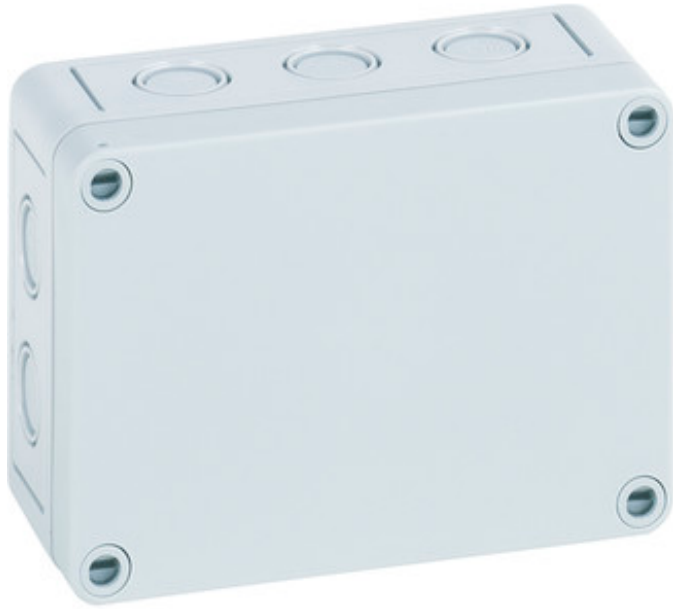


EMPTY ENCLOSURE

TK PS 1309-6-m



TK PS 1309-6-m

Empty enclosure

CUSTOMIZABLE

130 x 94 x 57 mm
Article number: 10540901

Empty enclosure, base and cover: polystyrene, grey, similar to RAL 7035

with metric knockouts



Technical data

Measures

Width:	130 mm
Length:	94 mm
Height:	57 mm
Inner height:	45 mm

Material

Base:	Polystyrene, grey, similar to RAL 7035
Cover:	Polystyrene, grey, similar to RAL 7035
Sealing:	Polyurethane
Cover screw:	Polyamide 6, fiber-glass reinforced

Accessory

- ASS-kl - External hinge set
- HBA - Mounting material
- MPS-KRI - Mounting plate
- NS 35-106 - Mounting rail
- NS 35-81 - Mounting rail
- TK ABL - External fixing lugs kit
- TK DST - Spacing kit
- TK MPI-1309 - Mounting plate
- TK TW-h - Partition wall
- TK TW-n - Partition wall
- TS 15-111 - Mounting rail



EMPTY ENCLOSURE

TK PS 1309-6-m

Other attributes

Ingress protection:	IP66 - acc. EN 60529 / DIN VDE 0470-1
Impact resistance:	IK07 acc. DIN EN 5012 / VDE 0470 Part 100
Protection class:	II - isolate protection acc. VDE 0106
Rated insulation voltage AC:	690V V
Rated insulation voltage DC:	1000 V
Heavy metals-free:	Yes
PVC-free:	Yes
Silicone-free:	Yes
Fitted for outdoor application:	No
Combustion behaviour to UL:	HB acc. UL94
Combustion behaviour to VDE:	650°C acc. VDE 0471/ EN 60695
sealable:	Yes
Weatherproof:	No
Knockouts:	Yes

Environmental attributes

Ambient temperature (min.):	-25 °C
Ambient temperature (max.):	40 °C
Ambient temperature (24 h):	35 °C
Max. rel. humidity at 25° C (short Therm):	95%
Max. rel. humidity at 40° C:	50%