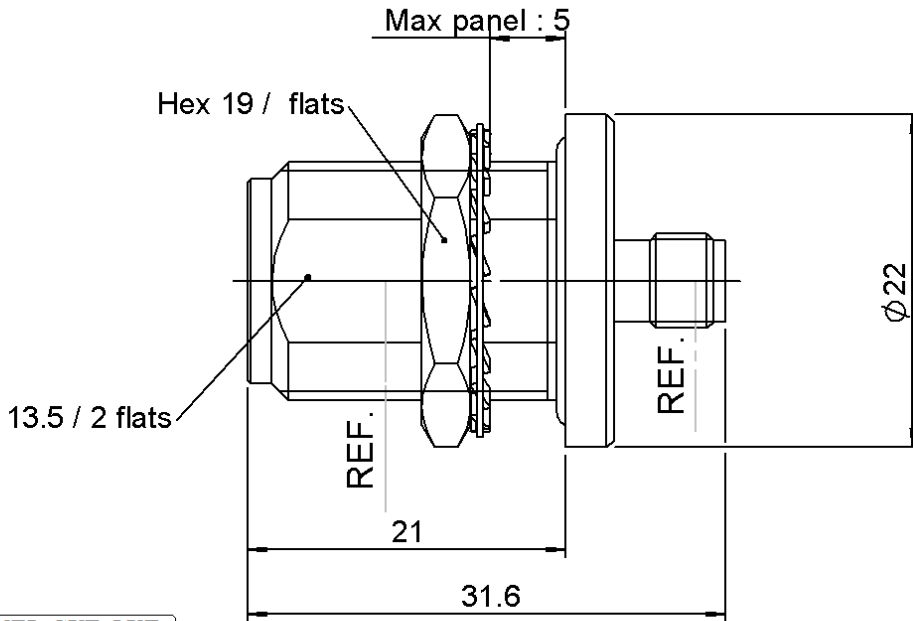


ADAPTOR N FEMALE - SMA FEMALE

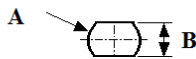
R191.332.000

BULKHEAD TYPE - PANEL SEAL

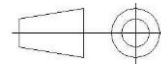
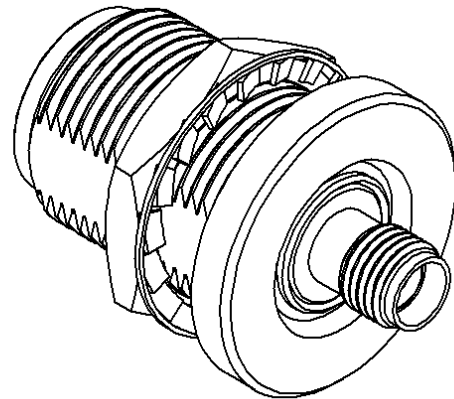
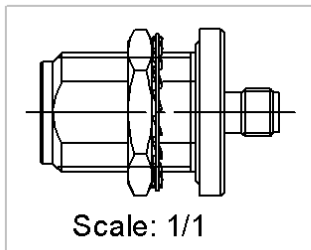
Série : ADAPT



PANEL CUT OUT



mm		
	Maxi	mini
A	16.1	16
B	13.7	13.6



All dimensions are in mm.

COMPONENTS	MATERIALS	PLATING (µm)
BODY	BRASS	SHINY NICKEL
CENTER CONTACT	BERYLLIUM COPPER	GOLD
OUTER CONTACT	-	-
INSULATOR	PTFE	-
GASKET	SILICONE RUBBER	-
OTHERS PARTS	BRASS	SHINY NICKEL
-	-	-
-	-	-

Issue : 1221 P

In the effort to improve our products, we reserve the rights to make changes judged to be necessary.



ADAPTOR N FEMALE - SMA FEMALE

R191.332.000

BULKHEAD TYPE - PANEL SEAL

Série : ADAPT

PACKAGING

Standard	Unit	Other
1		Contact us

SPECIFICATION

QAE 06-02 - -

ELECTRICAL CHARACTERISTICS

Impedance	50	Ω
Frequency	0-11	GHz
VSWR	1.20	Maxi
Insertion loss	0.15	Maxi
RF leakage	- (101	- F(GHz)) dB Maxi
Voltage rating	500	Veff Maxi
Dielectric withstanding voltage	1500	Veff mini
Insulation resistance	5000	M Ω mini

ENVIRONMENTAL

Operating	-55/+155	$^{\circ}$ C
Hermetic seal	NA	Atm.cm3/s
Panel leakage	NA	

MECHANICAL CHARACTERISTICS

Center contact retention		
Axial force – Mating end	27	N mini
Axial force – Opposite end	27	N mini
Torque	NA	N.cm mini
Recommended torque		
Mating	N	* N.cm
	SMA	* N.cm
Panel nut	500	N.cm
Mating life	500	Cycles mini
Weight	40,0000	g

OTHER CHARACTERISTICS

* For information the recommended torque with the
SMA plug : 100 N.cm maxi
N plug : 170 N.cm maxi

Issue : 1221 P

In the effort to improve our products, we reserve the rights to make changes judged to be necessary.

