

Han 24Mod Docking Frame Fixed, Set

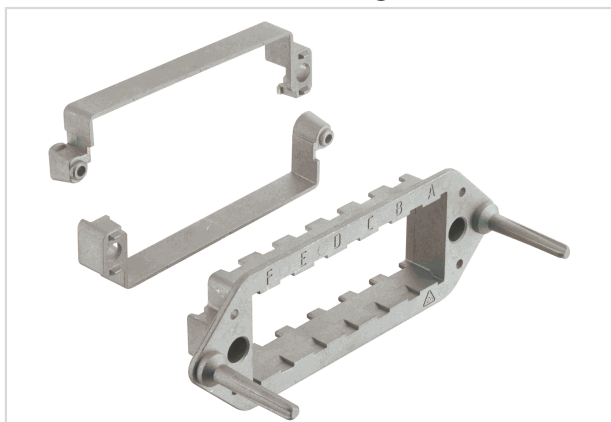


Image is for illustration purposes only. Please refer to product description.

Part number	09 14 024 1716
Specification	Han 24Mod Docking Frame Fixed, Set
HARTING eCatalogue	https://b2b.harting.com/09140241716

Identification

Category	Accessories
Series	Han-Modular®
Type of accessory	Docking frame
Description of the accessory	Fixed for 6 modules A ... F

Technical characteristics

Limiting temperature	-40 ... +125 °C
Mating cycles	≥500
Mating cycles with other HMC components	≥10,000
Floating tolerance	±2 mm
Lock-in range	±4 mm

Material properties

Material	Zinc die-cast
RoHS	compliant
ELV status	compliant
China RoHS	e
REACH Annex XVII substances	No
REACH ANNEX XIV substances	No
REACH SVHC substances	No



Pushing Performance

Specifications and approvals

Specifications	EN 60664-1 IEC 61984
----------------	-------------------------

Commercial data

Packaging size	1
Net weight	221 g
Country of origin	China
European customs tariff number	85389099
eCl@ss	27440206 Module carrier frame for industrial connectors