



HID-Basic BSN/BMH MK4 semi-parallel for SON/CDO/CDM/MH/HPI

BSN 400 K407-A2-ITS 230/240V 50Hz BC3

Impregnated electromagnetic copper ballasts for use with an external semi-parallel ignitor for CDM, CDO, MH, HPI (Plus) and SON lamps

Product data

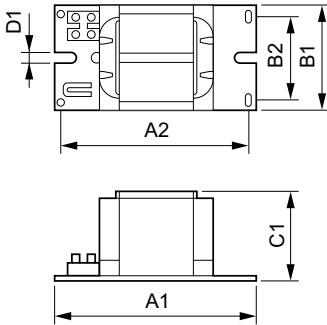
General Information		Ballast Contact Wire Cross Section	
Application Code	K407-A2-ITS		1.50-4.00 mm ²
Design	BC3-166	Connector Type	Screw
Lamp Type	SON/HPI	System characteristics	
Number Of Lamps	1 piece/unit	Capacitor	45µF/250V
Operating and Electrical		Rated Ballast-Lamp Power	400 W
Input Voltage	230 V (default) or 240 V	Recommended Ignitor	for SON/CDO/CDM lamps ignitor SKD 578 (913700655366) or series digital SUD40 (913700193591)
Input Frequency	50 Hz	Temperature	
Power Factor 100% Load (Nom)	0.85	T-Storage (Max)	130 °C
Mains Voltage Performance (AC)	-8%+6%	T-Storage (Min)	-30 °C
Mains Voltage Safety (AC)	-10%+10%	T-Winding (Max)	130 °C
Input Current With PF Correction	2.20 A	Delta-T Normal Conditions	80 °C
Input Current Without PF Correction	4.45 A	Approval and Application	
Power Factor Without PF Compensation (Nom)	0.40	Active Temperature Protection	Yes
Power Losses (Nom)	33/34.5 W	Wiring	
Wire Striplength	7.0 mm		

HID-Basic BSN/BMH MK4 semi-parallel for SON/CDO/CDM/MH/HPI

Approval Marks	CE marking ENEC certificate
Product Data	
Full product code	872790088704400
Order product name	BSN 400 K407-A2-ITS 230/240V 50Hz BC3
EAN/UPC - Product	8711500881571
Order code	913700277826

Numerator - Quantity Per Pack	1
Numerator - Packs per outer box	2
Material Nr. (12NC)	913700277826
Net Weight (Piece)	4.950 kg

Dimensional drawing



Product	D1	C1	A1	A2	B1	B2
BSN 400 K407-A2-ITS 230/240V 50Hz BC3	6.5 mm	83.0 mm	166.0 mm	145.0 mm	97.0 mm	78.5 mm

BSN 400 K407-ITS 230/240V 50Hz BC3-166

