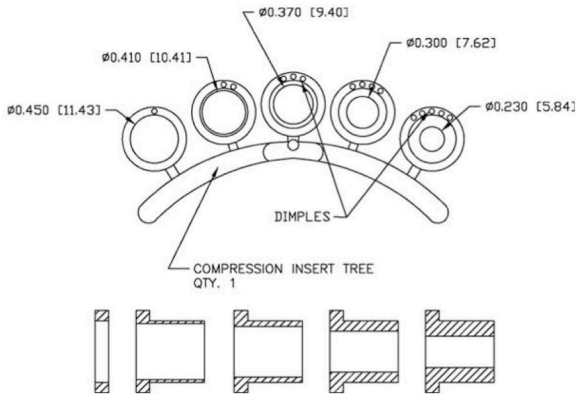
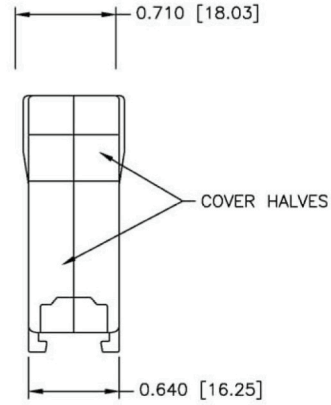
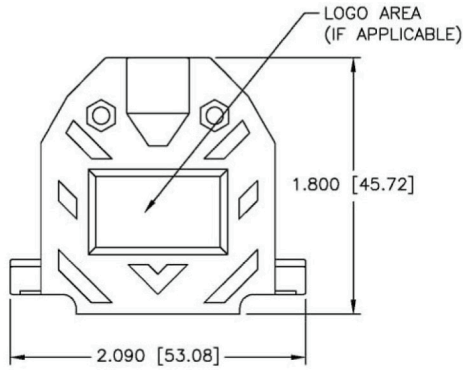
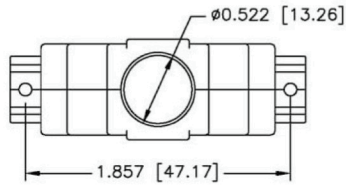






No.	Changes and/or Note No.	Date	Intr.	No.	Changes and/or Note No.	Date	Intr.
-----	-------------------------	------	-------	-----	-------------------------	------	-------



-  #4-40 X 7/16" FILLISTER HEAD MACHINE SCREW - CR STEEL, ZINC PLATED
QTY: 2 EACH
-  #4-40 #2 BLANK HEX NUT - 1010 STEEL, ZINC PLATED
QTY: 2 EACH
-  #4-40 X 1/2" FILLISTER HEAD CAPTIVE SCREW - CR STEEL, ZINC PLATED
QTY: 2 EACH
-  #4 SADDLE WASHER - CR STEEL, ZINC PLATED
QTY: 2 EACH

CONNECTOR COVER:

1. MATERIAL: ABS COMPOUND
2. FINISH: NICKEL PLATING PER NTC SPECIFICATION N/T 000500
3. DIMENSIONS: INCHES [MM]
4. TOLERANCE: ±0.015 [0.381]

COMPRESSION INSERT TREE

1. MATERIAL: THERMOPLASTIC COMPOUND
2. COLOR: BLACK
3. DUROMETER: 80 ±3 TYPE A PER ASTM D2240
4. DIMENSIONS: INCHES [MM]
5. TOLERANCE: ±0.020 [0.508]

DATE 031016	DRAWN MRR	SCALE	MATERIAL TYPE
	APPROVED		REPLACES



25-pos Metalized Hood, Top Entry
Part No: 1060-0105-03



DRAWING No
C88E320000