

- 1
- 2
- 3
- 4
- 5
- 6
- 7
- 8
- 9
- 10
- 11
- 12
- 13
- 14
- 15
- 16
- 17
- 18

**MATERIAL**

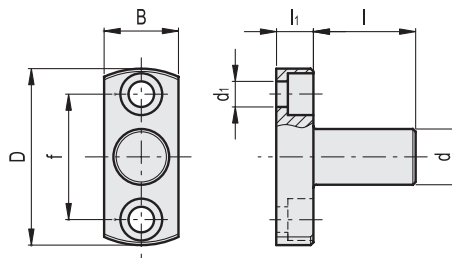
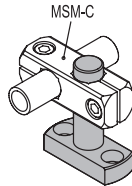
Zinc-plated steel.

**FEATURES AND APPLICATIONS**

MSM-P flanged bolts are used for matching with connecting clamps, with the function of levelling element or holding flange.

**KEY TO TABLE DIMENSIONS**

d1= holes for clamping screws with threading as indicated in the table.  
f = fixing holes centre distance: it allows matching and fixing to magnetic bases MSM-RM (see page 915).



| Code   | Description   | d  | d1 | D    | B  | l    | l1 | f  | △△  |
|--------|---------------|----|----|------|----|------|----|----|-----|
| 500401 | MSM-P-8-18    | 8  | M4 | 31.5 | 14 | 18   | 6  | 22 | 23  |
| 500403 | MSM-P-8-32    | 8  | M4 | 31.5 | 14 | 32   | 6  | 22 | 40  |
| 500405 | MSM-P-10-21   | 10 | M5 | 38   | 16 | 21   | 8  | 27 | 43  |
| 500407 | MSM-P-10-37   | 10 | M5 | 38   | 16 | 37   | 8  | 27 | 52  |
| 500409 | MSM-P-12-22   | 12 | M5 | 38   | 16 | 22   | 8  | 27 | 49  |
| 500411 | MSM-P-12-39   | 12 | M5 | 38   | 16 | 39   | 8  | 27 | 64  |
| 500413 | MSM-P-15-27.5 | 15 | M6 | 45   | 20 | 27.5 | 10 | 32 | 94  |
| 500415 | MSM-P-15-47.5 | 15 | M6 | 45   | 20 | 47.5 | 10 | 32 | 122 |
| 500417 | MSM-P-16-28   | 16 | M6 | 45   | 20 | 28   | 10 | 32 | 100 |
| 500419 | MSM-P-16-49   | 16 | M6 | 45   | 20 | 49   | 10 | 32 | 133 |
| 500421 | MSM-P-20-35   | 20 | M6 | 50   | 25 | 35   | 10 | 36 | 166 |
| 500423 | MSM-P-20-60   | 20 | M6 | 50   | 25 | 60   | 10 | 36 | 228 |

Levelling feet and supports