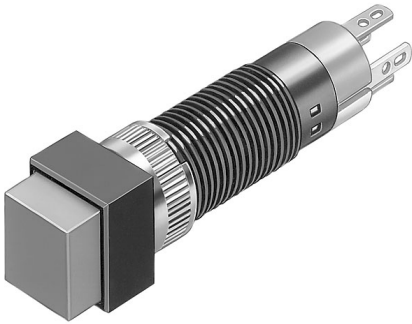


EAO – Your Expert Partner for Human Machine Interfaces

19-289.015 - Illuminated pushbutton actuator

19-289.015 - Illuminated pushbutton actuator



Attention: The preview is based on a sample product. This can differ from your current configuration.

Mounting

Mounting cut-out \varnothing 8 mm

Front

Front dimension 9 x 9 mm
Front shape square

Other Attributes

Weight 0.002 kg

IP-Rating

Front protection IP 40

Connection Method

Terminal Solder 2.0 x 0.5mm

Actuator

Switching action Maintained

Switching element

Switching system Snap-action switching element
Contact material Silver
Contacts 1 NO
Switching voltage 50 V AC
Switching current 0.8 A

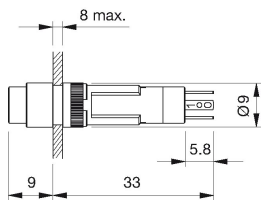
Function

Illuminated pushbutton

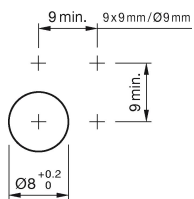
EAO – Your Expert Partner for Human Machine Interfaces

19-289.015 - Illuminated pushbutton actuator

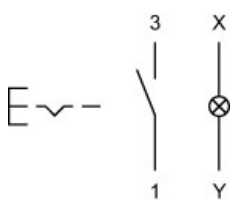
Dimensions



Mounting cut-outs



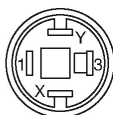
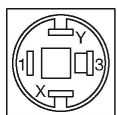
Wiring diagram



Component layout

9 x 9 mm

Ø9 mm



Legend

Contacts: NO = Normally open

Switching action: C = Maintained