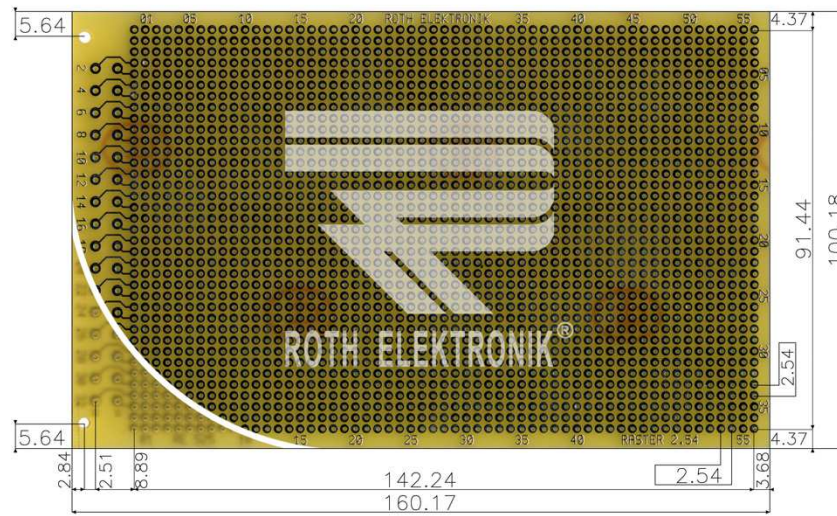


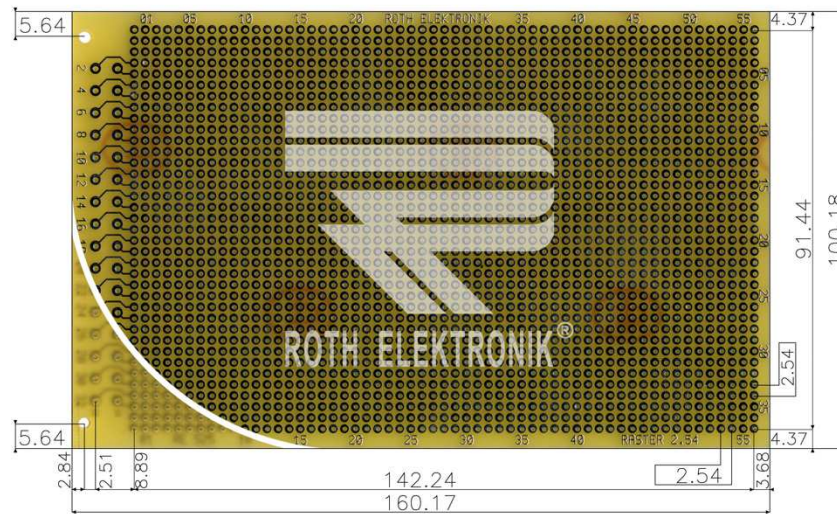
RE525-LF

- Epoxy fibre-glass FR4 1.50 mm
- Single-sided 35 µm Cu
- Hot air leveling (HAL-leadfree)
- Hole spacing 2.54 x 2.54 mm
- 37 x 57 soldering pads 2.10 mm Ø
- Hole diameter 1.00 mm
- Connector 32-channel DIN 41612 grid 5.08 mm type D
- Size 100 x 160 mm



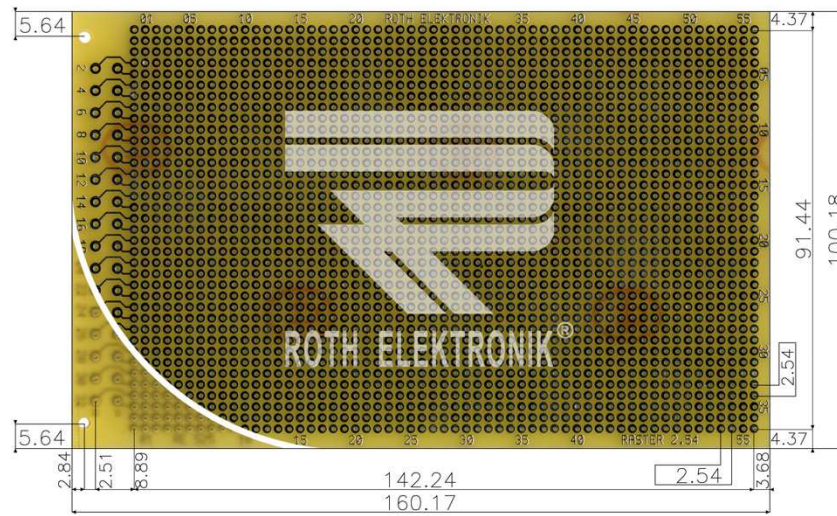
RE525-LF

- Epoxydglashartgewebe FR4 1,50 mm
- Einseitig 35 µm Cu
- Heißverzinnt (HAL-leadfree)
- Lochraster 2,54 x 2,54 mm
- 37 x 57 Lötinseln 2,10 mm Ø
- Lochdurchmesser 1,00 mm
- Steckverbinder 32-polig DIN 41612 Raster 5,08 mm Bauform D
- Größe 100 x 160 mm



RE525-LF

- Fibre de verre époxyde FR4 1,50 mm
- Simple face 35 µm Cu
- Étamé à chaud (HAL-leadfree)
- Pas 2,54 x 2,54 mm
- 37 x 57 îlots de brasage 2,10 mm Ø
- Perforation 1,00 mm Ø
- Connecteur 32-pôles DIN 41612 pas 5,08 mm type D
- Dimensions 100 x 160 mm



RE525-LF

- Fibra de vidrio epoxídica FR4 1,50 mm
- Por un lado 35 µm de Cu
- Estañado en caliente (HAL-leadfree)
- Trama de agujeros 2,54 x 2,54 mm
- 37 x 57 nodos de soldadura 2,10 mm Ø
- Diámetro de los agujeros 1,00 mm
- Conector enchufable 32-polos DIN 41612 trama 5,08 mm modelo D
- Tamaño 100 x 160 mm