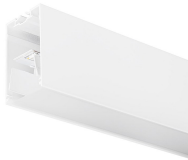


Mini Continuum II - Direct - Trimless

MC2 1.2M 4K DALIEM WHT OPAL

2093116



Product features

- 2093116 MC2 1.2M 4K DALIEM WHT OPAL Continuous lines of LED light, white RAL 9016, direct distribution, trimless detail for a seamless finish, suitable for recessed, semi-recessed, surface-mounted or suspended installation either horizontally or vertically, various accessories available, compact and minimalist design based on the Golden Mean, ideal for offices, meeting rooms, corridors, education facilities, museums and libraries, extruded aluminium body, diffuser: opal, colour temperature: 4000K neutral white, total system power: 24W, total fixture output: 2350lm, emergency output: 128lm, luminaire efficacy: 98lm/W, LOR: 100%, colour rendering: Ra >80, LED Chromacity: 3 step MacAdam ellipse, lifespan: 66,000 hours L90B10, IR/UV free light source without heat radiation, operating voltage: 220-240V / 50-60Hz, drive current: 800mA, electronic driver, DALI dimmable, integral emergency: 3 hour maintained, electrical protection: CLASS I, IP20, suitable for internal environment only.



PRODUCT OVERVIEW

Product name	MC2 1.2M 4K DALIEM WHT OPAL
Technology	LED
Housing	Aluminium
Mount	Track mounting
Environment	Internal
General application	Education, Hospitality, Office, Retail
ETIM Class	EC002892
Warranty	5 years
Fixture luminous flux (lm)	2350
Luminaire efficacy (lm/W)	98
LOR (%)	100
Colour temperature (K)	4000
Light colour	Neutral White
CRI (Ra)	80
Colour Variation Initial (SDCM)	SDCM3
Glare control	< 24
Photobiological Risk Group	RG0
Luminous flux (emergency) (lm)	128
Luminous flux (emergency) (lm)	128
Total power consumption (W)	24
Electrical protection	Class I
Control gear type	Electronic ballast
Dimming method	DALI
Minimum dimming level (%)	1
Housing colour	White
IP rating	IP20
IK rating	IK02
Product EAN number	5025768931163

Mini Continuum II - Direct - Trimless

MC2 1.2M 4K DALIEM WHT OPAL
2093116

DATA TABLE

General data

Product name	MC2 1.2M 4K DALIEM WHT OPAL
Technology	LED
Housing	Aluminium
Mount	Track mounting
Environment	Internal
General application	Education, Hospitality, Office, Retail
Performance ambient temperature Tq (°C)	25
ETIM Class	EC002892
Warranty	5 years

Optical data

Fixture luminous flux (lm)	2350
Luminaire efficacy (lm/W)	98
LOR (%)	100
Colour temperature (K)	4000
Light colour	Neutral White
CRI (Ra)	80
Colour Variation Initial (SDCM)	SDCM3
Adjustable chromaticity	N
Glare control	< 24
Photobiological Risk Group	RG0
Luminous flux (emergency) (lm)	128
Luminous flux (emergency) (lm)	128
Emergency duration (h)	3

Electrical data

Total power consumption (W)	24
Mains voltage (V)	220-240V
Lamp power factor	0.98
Electrical protection	Class I
Control gear type	Electronic ballast
Transformer required	Yes
Dimming method	DALI
Minimum dimming level (%)	1
Drive current (mA)	800
Inrush Current (A)	40
Inrush Duration (µs)	178
Energy Efficiency Class (A->G) of contained light source	C
Max. Luminaires per 10A C Breaker	15
Max. Luminaires per 13A C Breaker	20
Max. Luminaires per 16A C Breaker	23
Max. Luminaires per 20A C Breaker	30
Max. Luminaires per 10A B Breaker	9
Max. Luminaires per 13A B Breaker	12

Mini Continuum II - Direct - Trimless

MC2 1.2M 4K DALIEM WHT OPAL
2093116

Max. Luminaires per 16A B Breaker	14
Max. Luminaires per 20A B Breaker	18

Lifetime data

Lifespan L70 B50	120000
Lifespan L80 B20	120000
Lifespan L90 B10	66000

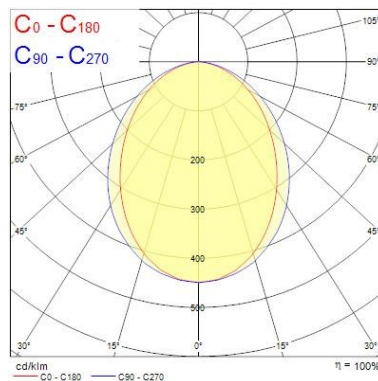
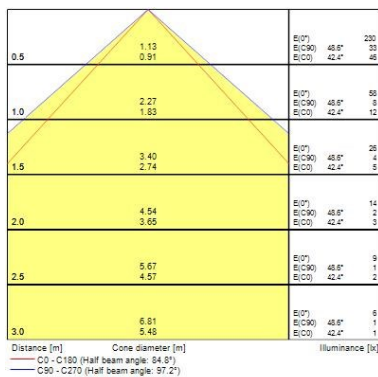
Physical data

Housing colour	White
IP rating	IP20
IK rating	IK02
Diffuser finish	Opal
Diffuser material	PC Polycarbonate
Nominal Product Length (mm)	1200
Nominal Product Width (mm)	54
Nominal Product Height (mm)	86
Cutout Dimensions (W x L in mm or Diameter in mm)	60 x 1200
Weight (kg)	2.8
Recessed Depth (mm)	136

Packaging

Single packaging type	Carton
Product EAN number	5025768931163
Packaging single length / height (cm)	125.0
Packaging single width (cm)	9.0
Packaging single depth (cm)	10.0
DUN14 (outer)	05025768931163
Units per outer package	1
Packaging outer length / height (cm)	125.0
Packaging outer width (cm)	9.0
Packaging outer depth (cm)	10.0

PHOTOMETRY



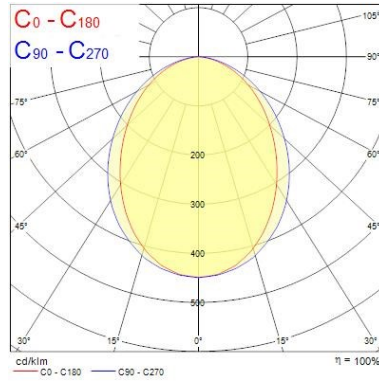
Mini Continuum II - Direct - Trimless

MC2 1.2M 4K DALIEM WHT OPAL
2093116

0.5	1.13 0.91	E(U) E(C90) E(C0)	4208 839 849
1.0	2.27 1.83	E(U) E(C90) E(C0)	1051 182 212
1.5	3.40 2.74	E(U) E(C90) E(C0)	457 69 94
2.0	4.54 3.65	E(U) E(C90) E(C0)	263 38 53
2.5	5.67 4.57	E(U) E(C90) E(C0)	168 24 34
3.0	6.81 5.48	E(U) E(C90) E(C0)	117 17 24

Distance [m] Cone diameter [m] Illuminance [lx]

— C0 - C180 (Half beam angle: 84.8°)
— C90 - C270 (Half beam angle: 37.2°)



TECHNICAL DRAWINGS

