

## EMT-F 20

Membrane spout, flame retardant



Products may differ in size, colour and appearance to those shown. If you require further information or customisation, please contact us directly.



<b>Material</b>	TPE, flame-retardant
<b>Temp. range min</b>	-40 °C
<b>Temp. range max</b>	80 °C
<b>Glow wire test</b>	960 °C
<b>Protection class</b>	IP66
<b>Ø Connection thread D</b>	20
<b>Length screw-in thread L</b>	9,5 mm
<b>Ø cable diameter min</b>	1 mm
<b>Ø cable diameter max</b>	13 mm
<b>External diameter ED</b>	25 mm
<b>Total length TL</b>	11 mm
<b>Ø Drilling</b>	20,5 mm
<b>Wall thickness S</b>	2 mm
<b>Product Color</b>	white
<b>Order no. RAL 9001</b>	10063009
<b>Type</b>	EMT-F 20
<b>Packing unit</b>	100
<b>ETIM-Classification</b>	EC000451

13.08.2019

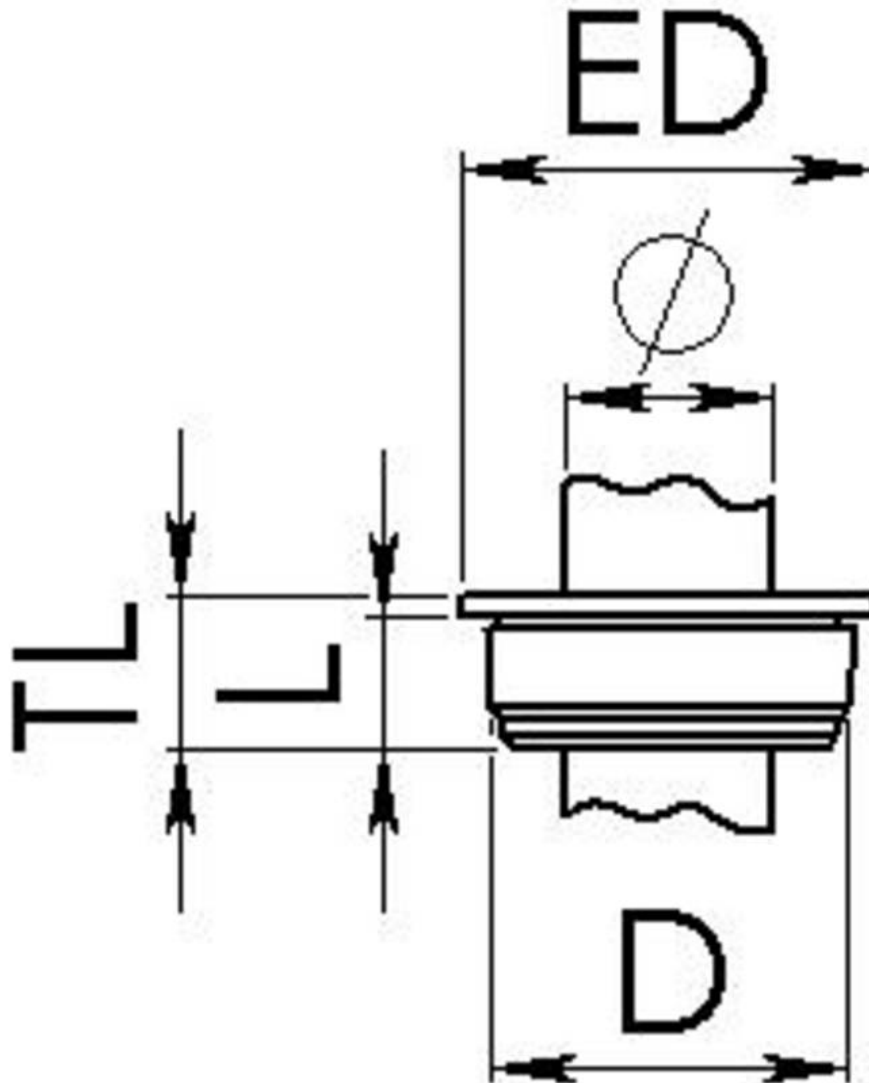
Your Contact:

**WISKA UK Ltd.**

Unit 7, Hurling Way · St. Columb Major Business Park · TR9 6SX, St. Columb Major, Cornwall · Great Britain

☎ +44-12-08816062 · 📠 +44-12-08816708

info@wiska.co.uk · www.wiska.co.uk



Your Contact:

**WISKA UK Ltd.**

Unit 7, Hurling Way · St. Columb Major Business Park · TR9 6SX, St. Columb Major, Cornwall · Great Britain

☎ +44-12-08816062 · 📠 +44-12-08816708

info@wiska.co.uk · www.wiska.co.uk