

CARTRIDGE MICRO-CYLINDER SERIES CRTC

Single-acting micro-cylinders with threaded body for fixing in small space or directly inside the machine body, owing to the external O-ring which ensures perfect seal.

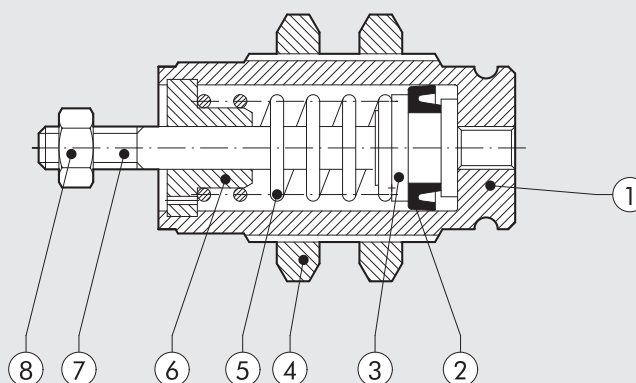
ATTENTION: in case of cycles with high frequencies it's advisable that the piston doesn't reach the end of the stroke during the rod coming out stage.



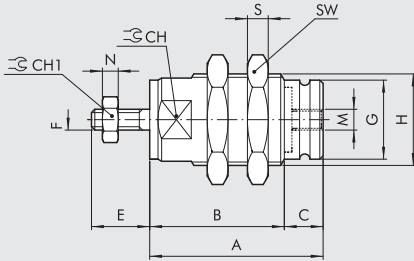
TECHNICAL DATA					
Operating pressure	bar	2 to 6			
	MPa	0.2 to 0.6			
Temperature range	°C	-10 to +80			
Fluid		Lubricated or unlubricated air.			
		Lubrication, if used, must be continuous			
Bores	mm	6; 10; 16			
Strokes	mm	5; 10; 15			
Port		M5			
Versions		Single-acting			
Design		Mechanically edged			
Seal OR on the body (not included in the supply)		Ø	OR		
		6	7x1		
		10	9.5x1.5		
		16	16x1.5		
Weight	g	Ø	STROKE		
			5	10	15
		6	14	16	19
		10	30	35	40
		16	76	84	90

COMPONENTS

- ① Nickel-plated brass body
- ② NBR rubber piston rod gasket (for Ø 6), polyurethane (for Ø 10 - Ø 16)
- ③ AISI 303 steel piston/piston rod (for Ø 6 - Ø 10)
Brass piston (for Ø 16)
- ④ Steel spring
- ⑤ Zinc-plated steel nut
- ⑥ Brass bushing
- ⑦ AISI 303 steel piston rod (for Ø 16)
- ⑧ Zinc-plated steel nut

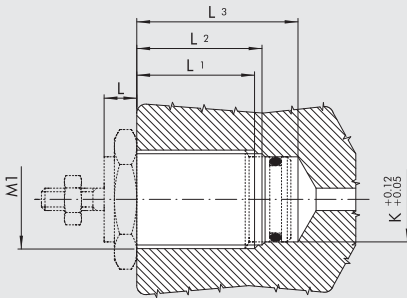


CARTRIDGE CYLINDER DIMENSIONS, Ø 6, 10, 16



Ø	A			B			C	CH	CH1	E	F	G	H	M	N	S	SW
	Stroke			Stroke													
6	19.5	26.5	33.5	14.5	21.5	28.5	5	9	5.5	8	M3	8.5	M10x1	M5	2.4	3	14
10	23	29.5	36.5	16	22.5	29.5	7	14	7	10.5	M4	12	M15x1.5	M5	2	4	19
16	27	32	37	21	26	31	6	20	8	13	M5	19	M22x1.5	M5	4	5	27

ASSEMBLY SEAT DIMENSIONS



Ø	L			L1			L2			L3			K	Hole	M1
	Stroke			Stroke			Stroke			Stroke					
6	5	5	5	10	17	24	11	18	25	16	24	31	8.5	9	M10x1
10	6	6	6	10	17	24	12	18.5	25.5	20	26	34	12	13.5	M15x1.5
16	7	7	7	14	19	24	15	20	25	26	31	36	19	20.5	M22x1.5

KEY TO CODES

Code	Description
W1000060005	CYL. CRTC-006-0005-S000-00
W1000060010	CYL. CRTC-006-0010-S000-00
W1000060015	CYL. CRTC-006-0015-S000-00
W1000100005	CYL. CRTC-010-0005-S000-00
W1000100010	CYL. CRTC-010-0010-S000-00
W1000100015	CYL. CRTC-010-0015-S000-00
W1000160005	CYL. CRTC-016-0005-S000-00
W1000160010	CYL. CRTC-016-0010-S000-00
W1000160015	CYL. CRTC-016-0015-S000-00

KEY TO CODES

CYL	C R T C	0 1 0	0 0 1 0	S 0 0 0	0 0	0 0
	TYPE	DIAMETER	STROKE	TYPE	FURTHER DESCRIPTION	SPECIAL DESIGN
	Cartridge microcylinder	006 010 016	0005 0010 0015	Single-acting retracted piston rod		