

Shrink collets

TER in accordance with DIN 6499 for use in the collet chuck

diebold

Application:

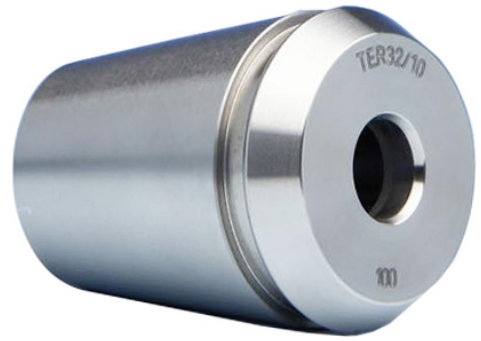
Areas of application in collet chuck: ER standard chucks with standard clamping nuts can be used. The collet chuck is impervious to coolant, which prevents contamination of the clamping cone.

Execution:

- Concentricity < 3 µm.
- Highest retention forces.
- Highest dimensional stability.
- Excellent changeover precision.

Delivery:

1x shrink collet.



Art. no.	23325 152
Brand	DIEBOLD
Manufacturer Part Number	64.TER.25.12
Collet type	TER-25/430 E
Clamping diameter	12 mm
Min./max. clamping range	3-16 mm
Outer diameter	26 mm
Length	34 mm
Gross Weight	0.065 kg
Product Group	297