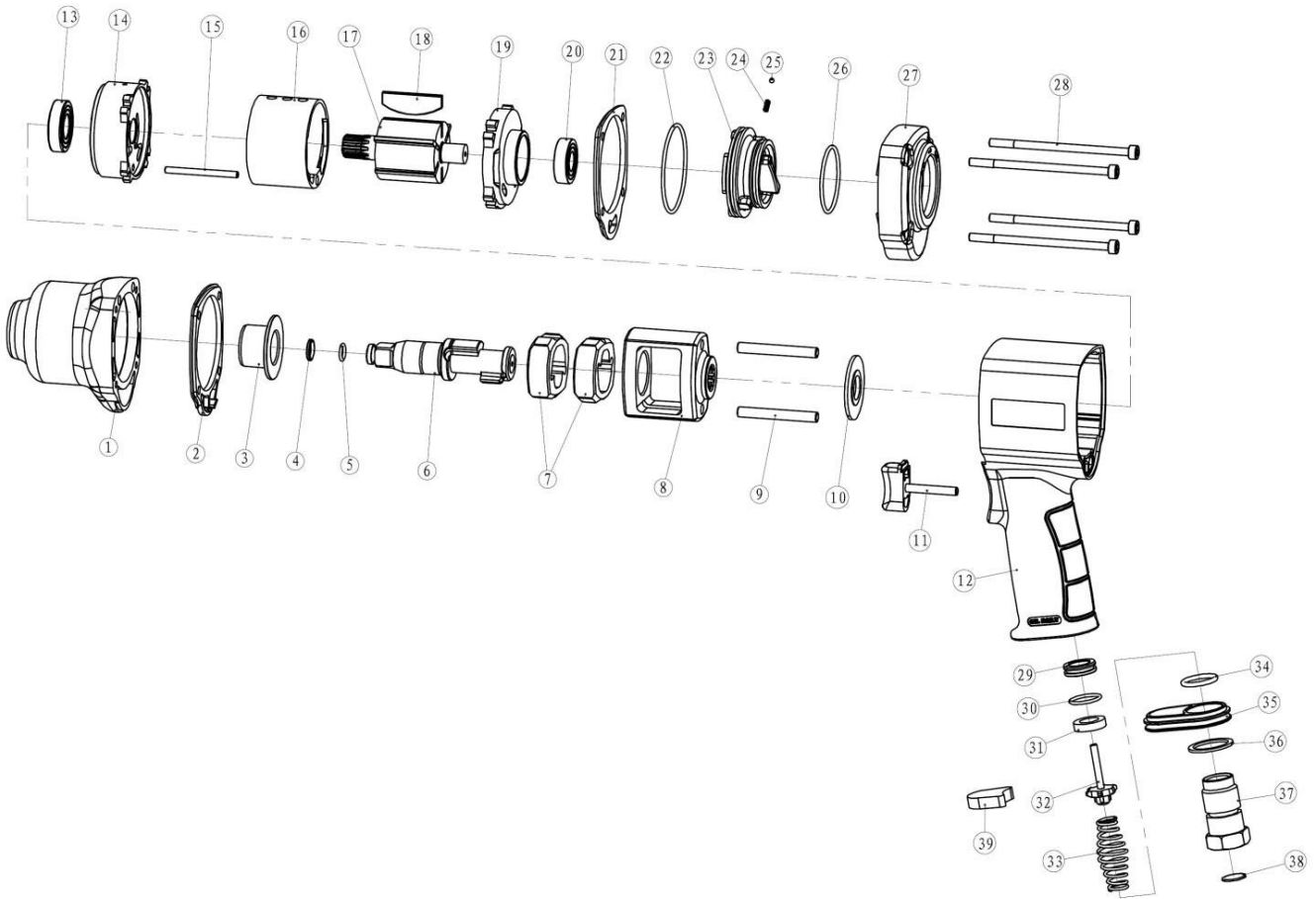




Parts Information:  
**Composite Air Impact Wrench 3/8" Sq  
 Drive Twin Hammer**  
**Model No: GSA6000.V2**



Item	Part No.	Description
1	GSA6000.V2-01	HAMMER CASE & ANVIL BUSHING
2	GSA6000.V2-02	RUBBER GASKET
4	GSA6000.V2-04	CIRCLIP
5	GSA6000.V2-05	O-RING
6	GSA6000.V2-06	ANVIL
7	GSA6000.V2-07	HAMMER
8	GSA6000.V2-08	HAMMER CAGE
9	GSA6000.V2-09	HAMMER PIN
10	GSA6000.V2-10	GASKET
11	GSA6000.V2-11	TRIGGER
12	GSA6000.V2-11A	HANDLE ASSY
13	GSA6000.V2-13	BEARING
14	GSA6000.V2-14	FRONT END PLATE
15	GSA6000.V2-15	PIN
16	GSA6000.V2-16	CYLINDER
17	GSA6000.V2-17A	ROTOR ASS'Y
18	GSA6000.V2-18	ROTOR VANE
19	GSA6000.V2-19	REAR END PLATE
20	GSA6000.V2-20	BEARING

Item	Part No.	Description
21	GSA6000.V2-21	RUBBER GASKET
22	GSA6000.V2-22	O-RING
23	GSA6000.V2-23	TIMING BUTTON
24	GSA6000.V2-24	SPRING
25	GSA6000.V2-25	STEEL BALL
26	GSA6000.V2-26	O-RING
27	GSA6000.V2-27	REAR COVER
28	GSA6000.V2-28	FASTENING SCREW
29	GSA6000.V2-29	INLET GASKET
30	GSA6000.V2-30	O-RING
31	GSA6000.V2-31	RUBBER SEAL
32	GSA6000.V2-32	INLET VALVE
33	GSA6000.V2-33	INLET SPRING
34	GSA6000.V2-34	O-RING
35	GSA6000.V2-35	PLASTIC COVER
36	GSA6000.V2-36	GASKET
37	GSA6000.V2-37	AIR INLET
38	GSA6000.V2-38	AIR INLET SCREEN
39	GSA6000.V2-39	MUFFLER

**NOTE:** It is our policy to continually improve products and as such we reserve the right to alter data, specifications and component parts without prior notice.

**IMPORTANT:** No liability is accepted for incorrect use of product.

**WARRANTY:** Guarantee is 12 months from purchase date, proof of which will be required for any claim.

Sealey Group, Kempson Way, Suffolk Business Park, Bury St Edmunds, Suffolk. IP32 7AR



01284 757500



01284 703534



sales@sealey.co.uk



www.sealey.co.uk