

Stainless steel transport castors with perforated plate, PU bandage

Swivel castors

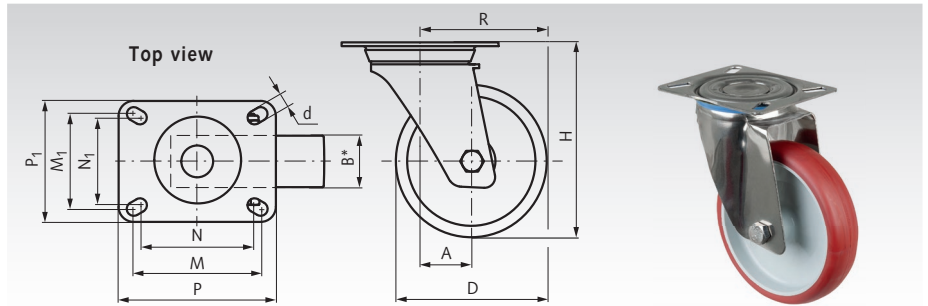
Material:

Fork: Stainless steel.
Tread: Polyurethane 98 +/-4° Shore A.
Wheel body: Plastic, screwed.
Wheel bearing: Plain bearing.
Swivel bearing: Double ball ring.

For interior and exterior use. Good resistance to oil, grease, petrol and chemicals.

Temperature range: -20°C to +70°C.

Ordering Details: e.g.: Product No. 777 610 80SS,
Stainless swivel castor, polyurethane, D 80 mm



Product No.	D mm	B mm	H mm	A mm	R mm	d mm	P mm	P ₁ mm	M mm	M ₁ mm	N mm	N ₁ mm	Load capacity kg	Weight kg
777 610 80SS	80	28	108	32	72	9	95	80	82	62	73	52	100	0,4
777 611 00SS	100	30	127	32	82	9	95	80	82	62	73	52	130	0,5
777 611 25SS	125	32	155	32	94,5	9	95	80	82	62	73	52	130	0,6
777 611 50SS	150	35	192	52	127	11	129	106	105	84	95	55	200	1,2
777 612 00SS	200	45	240	48	148	11	129	106	105	84	95	55	200	1,7

Swivel castors with brakes

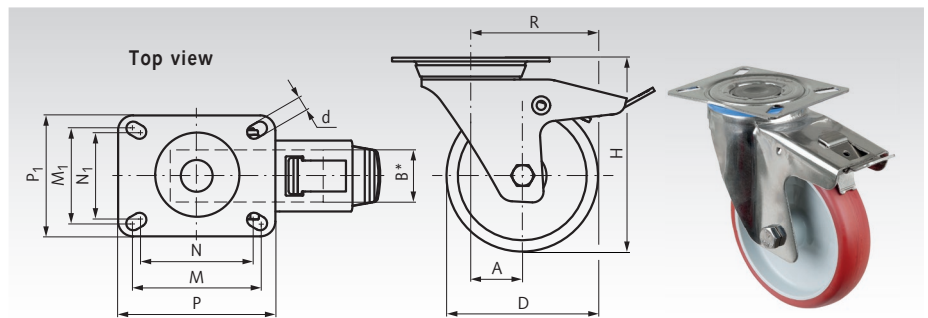
Material:

Fork: Stainless steel.
Tread: Polyurethane 98 +/-4° Shore A.
Wheel body: Plastic, screwed.
Wheel bearing: Plain bearing.
Swivel bearing: Double ball ring.

For interior and exterior use. Good resistance to oil, grease, petrol and chemicals.

Temperature range: -20°C to +70°C.

Ordering Details: e.g.: Product No. 777 620 80SS,
Stainless Swivel castor with brake, polyurethane, D 80 mm



Product No.	D mm	B mm	H mm	A mm	R mm	d mm	P mm	P ₁ mm	M mm	M ₁ mm	N mm	N ₁ mm	Load capacity kg	Weight kg
777 620 80SS	80	28	108	32	72	9	95	80	82	62	73	52	100	0,5
777 621 00SS	100	30	127	32	82	9	95	80	82	62	73	52	130	0,6
777 621 25SS	125	32	155	32	94,5	9	95	80	82	62	73	52	130	0,7
777 621 50SS	150	35	192	52	127	11	129	106	105	84	95	55	200	1,3
777 622 00SS	200	45	240	48	148	11	129	106	105	84	95	55	200	1,8

Fixed castors

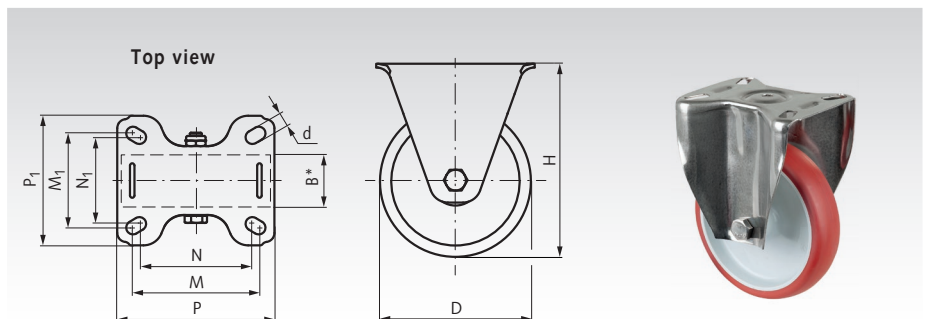
Material:

Fork: Stainless steel.
Tread: Polyurethane 98 +/-4° Shore A.
Wheel body: Plastic, screwed.
Wheel bearing: Plain bearing.

For interior and exterior use. Good resistance to oil, grease, petrol and chemicals.

Temperature range: -20°C to +70°C.

Ordering Details: e.g.: Product No. 777 630 80SS,
Stainless fixed castor, polyurethane, D 80 mm



Product No.	D mm	B mm	H mm	d mm	P mm	P ₁ mm	M mm	M ₁ mm	N mm	N ₁ mm	Load capacity kg	Weight kg
777 630 80SS	80	28	108	9	100	83	80	62	74	55	100	0,3
777 631 00SS	100	30	127	9	100	83	80	62	74	55	130	0,4
777 631 25SS	125	32	155	9	100	83	80	62	74	55	130	0,5
777 631 50SS	150	35	192	11	135	110	107	83	95	55	200	1,0
777 632 00SS	200	45	240	11	135	110	107	83	95	55	200	1,5

* Wheel width