

## Clamping sleeves, slotted

Suitable for Parart WB replacement holder

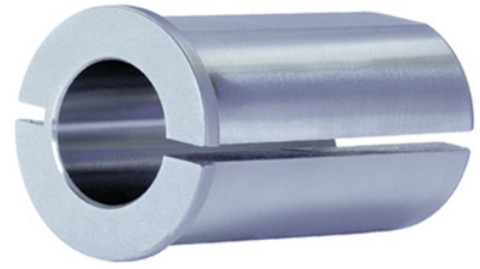


### Application:

For clamping cylindrical tools.

### Execution:

- External and internal diameter, cylindrical



<b>Art. no.</b>	<b>22277 125</b>
<b>Brand</b>	PARAT TRAUTWEIN
<b>Manufacturer Part Number</b>	302550
<b>Internal diameter</b>	25 mm
<b>For clamping sleeve type</b>	RD 1
<b>Gross Weight</b>	0.124 kg
<b>Product Group</b>	213