

Fixed jaw for 5-axis design smooth

incl. sliding block and screw

Version

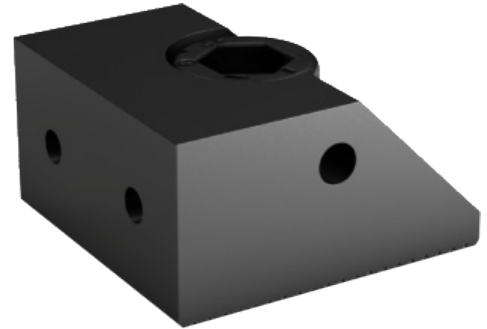
- Fixed jaw for 5-axis design smooth
- Attached using 14-mm T-sliding block with M12 thread

Advantage

- Fixed jaw bevelled for better accessibility

Delivery

1 pc. Fixed jaw for 5-axis design smooth, incl. sliding block and screw



Art. No.	28890 601
Taper clamp design	Smooth
Jaws width	32 mm
Jaws thickness	22 mm
Jaws height	15 mm
Fastening thread	M8

EAN-Code

4050293674125