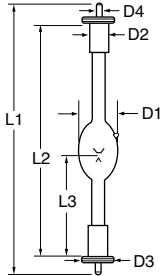


**UXL**

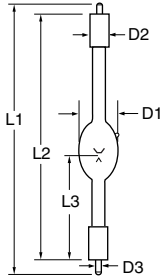
- 300 - 1000 Watts
- Searchlight
- Followspot
- Projection



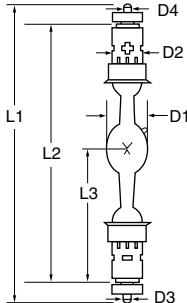
Watts (W)	Ordering Code	Lamp Description	Rated Amps (A)	Current Control Range (A)	Volts (V)	Forced Air Cooling (m/sec)	Arc Gap (mm)	Diameter (mm)				Length (mm)			Avg Life (h)
								(D1) max	(D2)	(D3)	(D4)	(L1)	(L2)	(L3)	
<b>Xenon Short Arc</b>															
300	5000343	UXL-300D-0	15	14-16	20	—	2.6	25	13	19	M5P0.9	175	150	65	1000
300	5000346	UXL-302-0	15	8-15	20	—	2.6	25	13	NO 10-32 UNF	—	174	150	85	900
350	5000350	UXL-351E-0	16	15-17	22	3-6	2.9	22	13	—	M8	133	120	66.5	1000
500	5000360	UXL-500D-0	25	17-25	20	4-6	4.0	29	20	M8P1.25	M8P1.25	234	204	95	1500(V) / 1200(H)
550	5000368	UXL-553	25	17-25	22	7-8	3.1	30	15	M6P1.0	—	161	135	65	1500
1000	5002060	UXL-10S	50	30-55	20	4-6	4.2	40	25	11	5/16-18 UNC	245	214	98.5	—
1000	5001075	UXL-10SB	50	30-55	20	4-6	4.2	40	25	11	5/16-18 UNC	245	214	98.5	1500



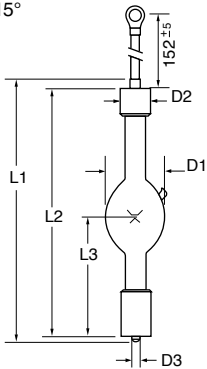
UXL-300D-0  
Burn Position: Vertical  $\pm 15^\circ$



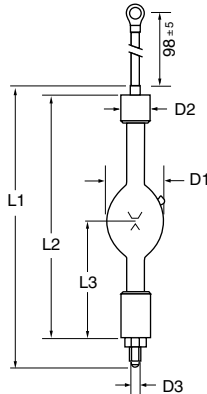
UXL-302-0  
Burn Position: Vertical  $\pm 30^\circ$



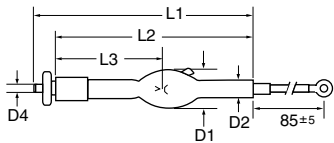
UXL-500D-0 / UXL-1000D-0  
Burn Position:  
Horizontal  $\pm 15^\circ$  Vertical  $\pm 15^\circ$



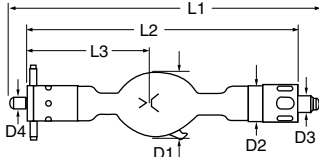
UXL-502HS-0  
Burn Position: Vertical  $\pm 15^\circ$



UXL-553  
Burn Position:  
Horizontal  $\pm 15^\circ$  Vertical  $\pm 15^\circ$



UXL-351E-0  
Burn Position: Horizontal  $\pm 15^\circ$



UXL-10S / UXL-16S  
Burn Position: Horizontal  $\pm 15^\circ$

**See Safety & Handling Instructions on Page 64**

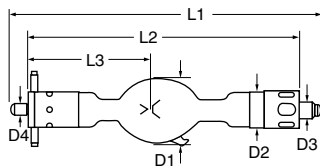
# XENON SHORT ARC LAMPS

## UXL

- 1600 - 3000 Watts
- Searchlight
- Followspot
- Projection

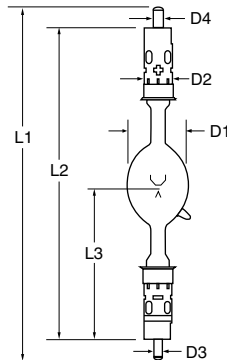


Watts (W)	Ordering Code	Lamp Description	Rated Amps (A)	Current Control Range (A)	Volts (V)	Forced Air Cooling (m/sec)	Arc Gap (mm)	Diameter (mm)				Length (mm)			Avg Life (h)
								(D1) max	(D2)	(D3)	(D4)	(L1)	(L2)	(L3)	
<b>Xenon Short Arc</b>															
1600	5001076	UXL-16SB	65	45-70	22	4-6	4.0	46.5	25	11	5/16-18 UNC	245	214	98.5	1500
2000	5001062	UXL-20FS	80	50-85	25	10-13	6.0	60	27	7.8	9.4	342	302	147	2000
2000	5001434	UXL-20SC	80	50-85	29	5-10	5.5	60	27	7.9	9.5	342	302	147	2400
2000	5001063	UXL-2000FS	70	50-85	29	10-13	6.0	55	27	12	10	370	320	145	2000
2000	5000336	UXL-2000HA	80	60-85	25	7-10	6.0	52	27	M14 P1.5	14	370	320	145	2000
2500	5001077	UXL-25SC	90	70-100	28	10-13	6.0	60	25	7.9	9.5	342	300	147	1500(V) / 1200(H)
3000	5001079	UXL-30SC	100	60-110	30	5-10	6.0	60	27	7.9	9.5	342	302	147	1500(V) / 1200(H)



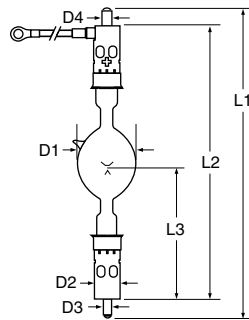
UXL-16SB

Burn Position: Horizontal  $\pm 15^\circ$  Vertical  $\pm 15^\circ$



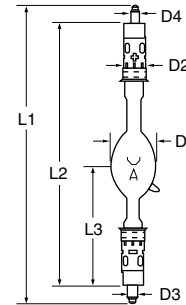
UXL-20FS

Burn Position: Horizontal  $\pm 15^\circ$  Vertical  $\pm 15^\circ$



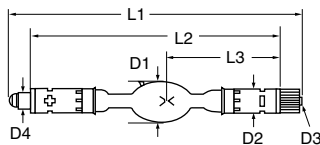
UXL-20SC

Burn Position: Horizontal  $\pm 30^\circ$  Vertical  $\pm 30^\circ$



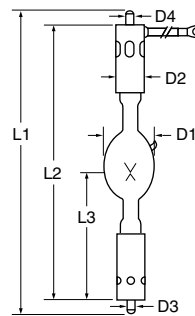
UXL-2000FS

Burn Position: Horizontal  $\pm 15^\circ$  Vertical  $\pm 15^\circ$



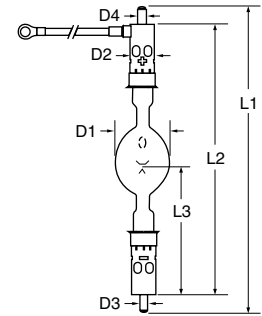
UXL-2000HA

Burn Position: Horizontal  $\pm 15^\circ$



UXL-25SC / UXL-40SC

Burn Position: Horizontal  $\pm 15^\circ$  Vertical  $\pm 15^\circ$



UXL-30SC

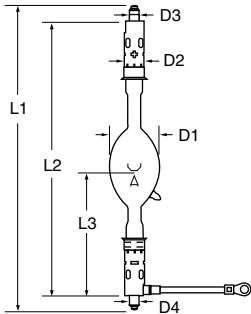
Burn Position: Horizontal  $\pm 30^\circ$  Vertical  $\pm 30^\circ$

**See Safety & Handling Instructions on Page 64**

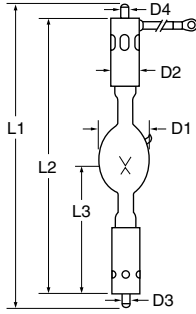
**UXL**

- 3000 - 7000 Watts
- Searchlight
- Followspot
- Projection

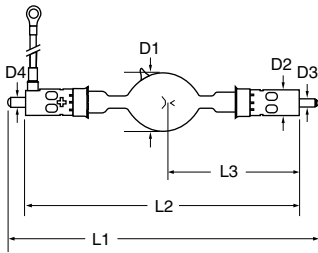
Watts (W)	Ordering Code	Lamp Description	Rated Amps (A)	Current Control Range (A)	Volts (V)	Forced Air Cooling (m/sec)	Arc Gap (mm)	Diameter (mm)				Length (mm)			Avg Life (h)
								(D1) max	(D2)	(D3)	(D4)	(L1)	(L2)	(L3)	
<b>Xenon Short Arc</b>															
3000	5001064	UXL-3000FS	100	60-100	30	10-13	7.0	70	27	13	14	428	—	171.0	1200
4000	5000631	UXL-40SC	135	80-150	29	10-13	7.0	70	30	7.9	9.5	410	370	174.5	1200
4000	5002082	UXL-40SCH	135	80-150	29	10-13	—	70	30	7.9	9.4	410	370	174.5	—
6000	5000943	UXL-60SC	160	120-170	37	10-13	9.0	80	30	9.4	7.85	433	392	176.0	500
7000	5000634	UXL-70SC	160	120-170	42	10-13	10.0	80	30	7.9	9.4	433	392	171.0	500



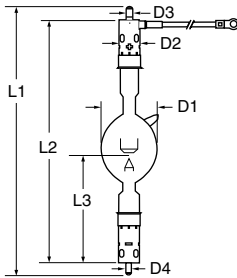
**UXL-3000FS**  
Burn Position:  
Horizontal ±15°  
Vertical



**UXL-40SC / UXL-40SCH**  
Burn Position:  
Horizontal ±15°  
Vertical ±15°



**UXL-70SC**  
Burn Position:  
Horizontal ±15°/45°



**UXL-60SC / UXL-50SC**  
Burn Position:  
Horizontal ±15° Vertical

**See Safety & Handling Instructions on Page 64**