

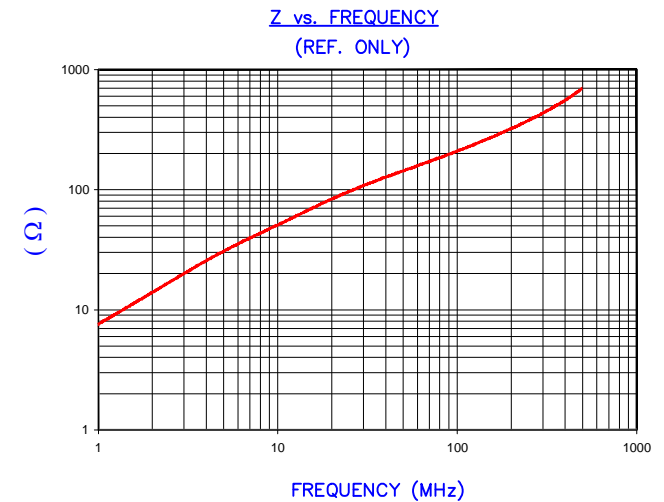
DETAIL "A"
CHAMFER
SCALE=6:1

NOTES: UNLESS OTHERWISE SPECIFIED

1. COSMETIC SPECIFICATION REFER TO WI-QA-038.



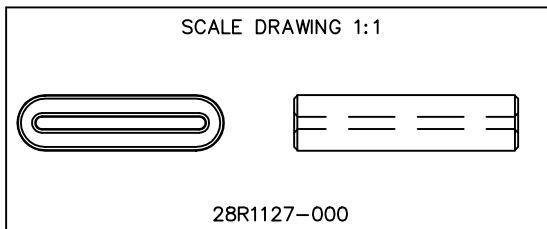
IMPEDANCE (Z)			
Frequency	25 MHz	100 MHz	300 MHz
Nominal (REF)	100 Ω	220 Ω	430 Ω
Minimum	- Ω	176 Ω	- Ω



FERRITE CORE DIMENSIONS (SPEC):mm[Inches]

A	28.58 [1.125]	+	0.50 [.020]
B	23.50 [.925]	+	0.51 [.020]
C	31.00 [1.220]	+	0.62 [.024]
D	7.70 [.303]	+	0.50 [.020]
E	1.70 [.067]	+	0.51 [.020]
		-	0.38 [.015]

WEIGHT/1000 26.35 kgs [58.09 Lbs]



DIMENSIONS ARE IN mm[INCHES].				This print is the property of Laird Tech. and is loaned in confidence subject to return upon request and with the understanding that no copies shall be made without the written consent of Laird Tech. All rights to design or invention are reserved.		Laird	
M	UPDATE COMPANY LOGO	05/29/15	QIU	PROJECT/PART NUMBER:		REV	DRAWN BY:
L	UPDATE Z SPECS AND COMPANY LOGO	07/27/07	JRK	28R1127-000		M	JBE
K	CHANGE TOLS ON B DIMENSION	12/16/05	JRK	DATE:	05/19/95	SCALE:	2 : 1
J	UPDATE MIN Z SPEC@100 Mhz, ADD REF #	01/27/04	JRK	CAD #	28R1127-000-M	TOOL #	R1127
H	UPDATE Z SPECS & FORMAT REM NOTE, REV CURVE AND CHANGE E TOLS	02/24/03	JRK	MATERIAL:		FERRITE	
REV	DESCRIPTION	DATE	INT				