

- 1
- 2
- 3
- 4
- 5
- 6
- 7
- 8
- 9
- 10
- 11
- 12
- 13
- 14
- 15
- 16
- 17
- 18



**MATERIAL**

Cast iron, sandblasted matte finish.

**CYLINDRICAL HANDLE**

Black-oxide steel.

**POSITIONING AND REST PIN**

Hardened steel.

**STANDARD EXECUTIONS**

- **GN 558-B:** hub with H7 reamed hole.
- **GN 558-K:** hub with H7 reamed hole and keyway in compliance with DIN 6885/2 tolerance P9 (see page A-15).

**FEATURES AND APPLICATIONS**

GN 558 control levers are normally used for positioning shafts in pre-fixed positions.  
The levers can also be supplied not assembled.

**MATERIAL**

Glass-fibre reinforced polyamide based (PA) technopolymer, black colour, matte finish. Balancing by means of an incorporated counterweight.

**CENTRE CLOSING CAP**

Technopolymer, black colour. On request and for sufficient quantities it can be supplied in other colours and customised with marks or words.

**STANDARD EXECUTION**

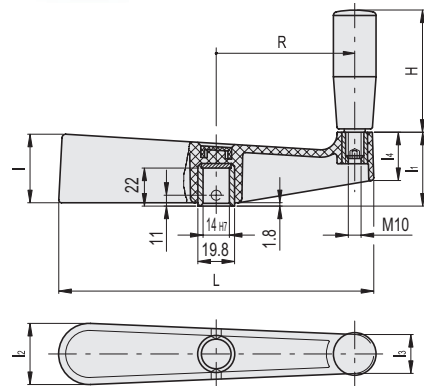
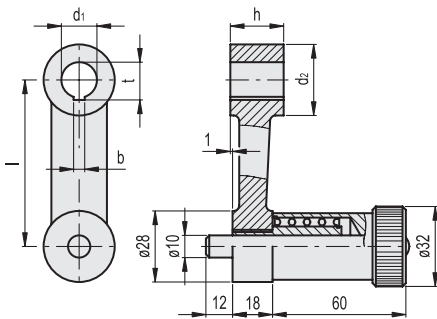
Black-oxide steel boss, H7 reamed hole.  
Reamed hole provided with centres already drilled for pinning to shaft.  
Revolving handle I.601+x (see page 574) in technopolymer.

**FEATURES**

Its surface with matte finish allows a sensible grip during operation, even in case of short approach controls. The revolving handle makes high-speed rotation easier.



ELESA Original design



Code	Description	l	d1 H7	d2	h	bP9	t	⚖️
GN.23101	GN 558-75-B16	75	16	32	24	-	-	544
GN.23102	GN 558-75-K16	75	16	32	24	5	17.3	537
GN.23111	GN 558-90-B18	90	18	34	26	-	-	588
GN.23112	GN 558-90-K18	90	18	34	26	6	19.7	583
GN.23121	GN 558-110-B20	110	20	36	30	-	-	694
GN.23122	GN 558-110-K20	110	20	36	30	6	21.7	689
GN.23131	GN 558-135-B22	135	22	42	32	-	-	823
GN.23132	GN 558-135-K22	135	22	42	32	6	23.7	818
GN.23141	GN 558-165-B24	165	24	44	36	-	-	994
GN.23142	GN 558-165-K24	165	24	44	36	8	25.7	988

Code	Description	dH7	L	l	l1	l2	l3	l4	H	R	⚖️
38901	METP.170	14	170	37	39	33	21	25	65	74	275