



VOLTAGE RELEASE, AC 90...110V, 50/60HZ, 100% ED, AC 70...190V, 50/60HZ, 5SEC ED, DC 70...190V, 5SEC ED, W. SCREW CONNECTION; FOR CIRCUIT-BREAKERS 3RV2

General technical data:

| | | |
|---|----|-----------------------|
| product brand name | | SIRIUS |
| Product designation | | shunt release |
| Size of the circuit-breaker | | S00, S0, S2 |
| Design of the product | | <kein Wert> |
| Suitability for use | | motor circuit breaker |
| Protection class IP on the front | | IP20 |
| Design of short-circuit protection | | fuse |
| Degree of pollution | | 3 |
| Insulation voltage Rated value | V | 690 |
| Insulation voltage with degree of pollution 3 Rated value | V | 690 |
| Ambient temperature | | |
| • during storage | °C | -50 ... +80 |
| • during operation | °C | -20 ... +60 |
| Equipment marking acc. to DIN 40719 extended according to IEC 204-2 acc. to IEC 750 | | F |
| Equipment marking acc. to DIN EN 61346-2 | | F |

Auxiliary circuit:

| | | |
|--|--|---|
| Number of NC contacts for auxiliary contacts instantaneous contact | | 0 |
| Number of NO contacts for auxiliary contacts instantaneous contact | | 0 |
| Number of NO contacts for auxiliary contacts leading contact | | 0 |

| | | |
|---|--|---|
| Number of CO contacts of the auxiliary contacts instantaneous contact | | 0 |
|---|--|---|

Control circuit/ Control:

| | | |
|---|---|--|
| Type of voltage of the control supply voltage | | AC |
| Control supply voltage frequency | | |
| <ul style="list-style-type: none"> • 1 <ul style="list-style-type: none"> — Rated value — Initial rated value — Final rated value • 2 Rated value | Hz Hz | <kein Wert> 50 60 <kein Wert> |
| Control supply voltage | | |
| <ul style="list-style-type: none"> • 1 <ul style="list-style-type: none"> — for DC <ul style="list-style-type: none"> — Rated value — Initial rated value — Final rated value — with AC <ul style="list-style-type: none"> — at 50 Hz Rated value — at 50 Hz Initial rated value — at 50 Hz Final rated value — at 60 Hz Rated value — at 60 Hz Final rated value — at 60 Hz Initial rated value • 2 <ul style="list-style-type: none"> — for DC Rated value — with AC <ul style="list-style-type: none"> — at 50 Hz Rated value — at 60 Hz Rated value | V V V V V V V V V | <kein Wert> <kein Wert> <kein Wert> <kein Wert> 90 110 <kein Wert> 110 90 <kein Wert> <kein Wert> <kein Wert> |

Installation/ mounting/ dimensions:

| | | |
|--|----|---|
| Mounting type | | snap-on mounting |
| Width | mm | 18.5 |
| Height | mm | 90 |
| Depth | mm | 68 |
| Required spacing with side-by-side mounting | | |
| <ul style="list-style-type: none"> • forwards • Backwards • upwards • downwards • at the side | | <kein Wert> <kein Wert> <kein Wert> <kein Wert> <kein Wert> |
| Required spacing for grounded parts | | |
| <ul style="list-style-type: none"> • forwards | | <kein Wert> |

- Backwards
- upwards
- at the side
- downwards

<kein Wert>
 <kein Wert>
 <kein Wert>
 <kein Wert>

Required spacing for live parts





- forwards
- Backwards
- upwards
- downwards
- at the side

<kein Wert>
 <kein Wert>
 <kein Wert>
 <kein Wert>
 <kein Wert>

Certificates/ approvals:

Certificate of suitability



CE / UL / CSA

| General Product Approval | | Declaration of Conformity | Test Certificates | | Shipping Approval |
|---|---|---|--|--|---|
|  |  |  | Type Test Certificates/Test Report | Special Test Certificate |  |
| CSA | UL | EG-Konf. | | | ABS |

Shipping Approval

| | | | | | |
|---|---|---|---|---|---|
|  |  |  |  |  |  |
| BUREAU VERITAS | DNV | GL | LRS | PRS | RINA |

Shipping Approval other

| | | | |
|---|---|---|-----------------------|
|  | Environmental Confirmations |  | other |
| RMRS | | VDE | |

Further information

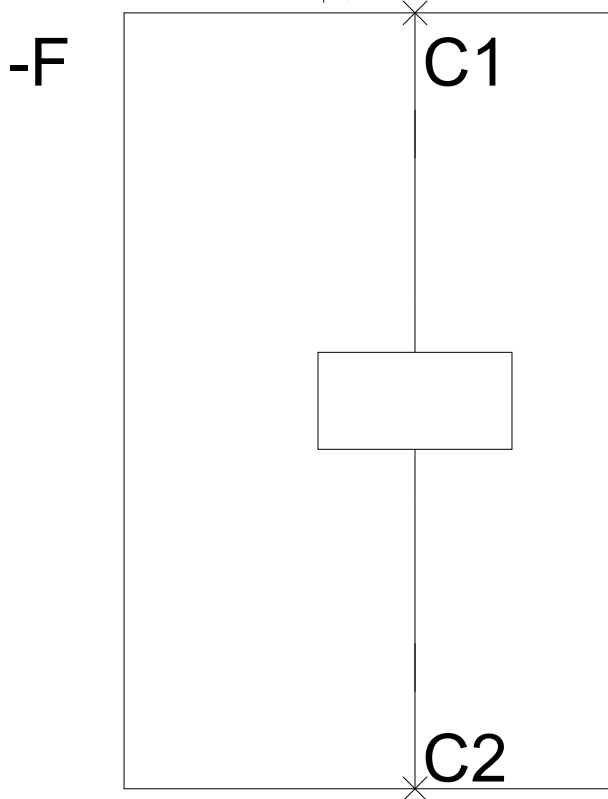
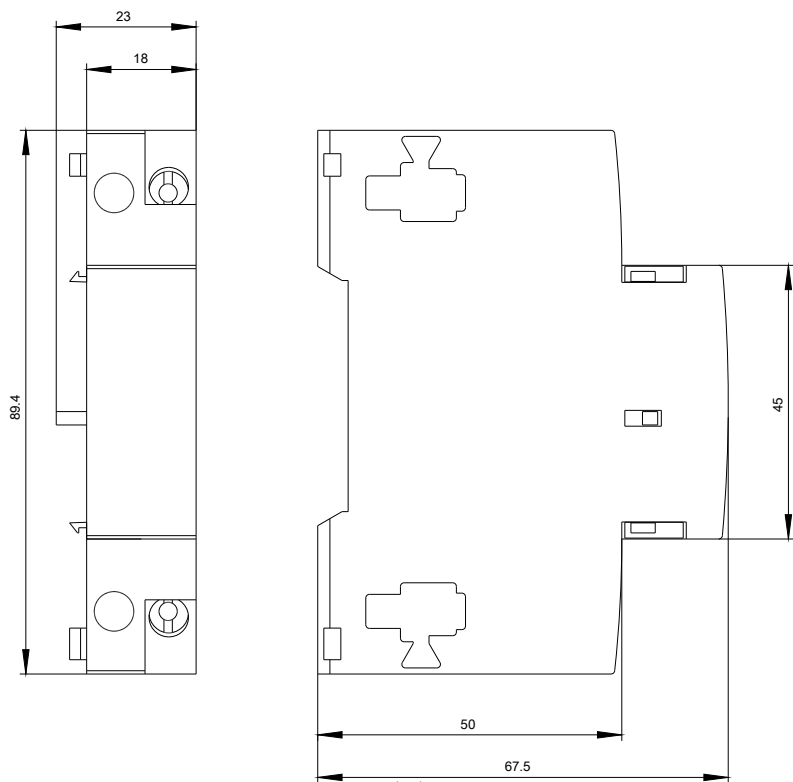
Information- and Downloadcenter (Catalogs, Brochures,...)
<http://www.siemens.com/industrial-controls/catalogs>

Industry Mall (Online ordering system)
<http://www.siemens.com/industrymall>

Cax online generator
<http://support.automation.siemens.com/WW/CAXorder/default.aspx?lang=en&mfb=3RV29021DF0>

Service&Support (Manuals, Certificates, Characteristics, FAQs,...)
<http://support.automation.siemens.com/WW/view/en/3RV29021DF0/all>

Image database (product images, 2D dimension drawings, 3D models, device circuit diagrams, EPLAN macros, ...)
<http://www.automation.siemens.com/bilddb/index.aspx?attID9=3RV29021DF0&lang=en>



last modified:

09.03.2015