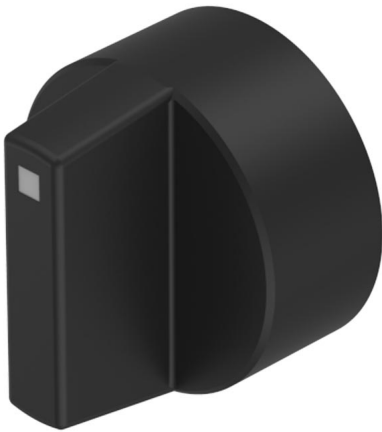


# EAO – Your Expert Partner for Human Machine Interfaces

61-9028.0 - Lever flush design

## 61-9028.0 - Lever flush design



*Attention: The preview is based on a sample product. This can differ from your current configuration.*

### Other Attributes

Bar colour	black
Weight	0,001 kg

### Operating-/Indication part

Lever material	Plastic
Lever colour	black
Lever illumination	non-illuminative
Lever shape	short