

Metalclad Plus
Connection Units &
20A DP Switches

1:2



Metalclad Plus™
Connection Units & 20A DP Switches

PRODUCT RANGE

13A DP Connection unit, switched	K942 ALM
with tamper-proof fuse screw	K942 KO ALM
with front flex outlet	K932 ALM
with neon indicator	K962 ALM
with neon indicator & red rocker	K962 D6 ALM
with front flex outlet & neon indicator	K972 ALM
with front flex outlet neon indicator & red rkr.	K972 D6 ALM
with secret key, neon & tamper-proof screw	K963 KO ALM
13A Connection units, unswitched	K954 ALM
with tamper-proof fuse screw	K954 KO ALM
with front flex outlet	K989 ALM
with front flex outlet, fitted with 5 amp fuse	K989D1ALM
with neon indicator	K983 ALM
with front flex outlet & neon indicator	K986 ALM
20A DP switches	K5212 ALM
with neon indicator	K5232 ALM
with front flex outlet & neon indicator	K5242 ALM

Standards and approvals

Connection units comply with BS 1363: Part 4: 1995.

20A DP switches comply with BS 3676: Part 1: 1989.

Fuses are to BS 1362.

Description

A range of 13A fused connection units and 20A DP switches designed for the connection of refrigerators, water heaters, central heating boilers and other fixed appliances.

The ranges are designed for ease of installation and have the advantageous design features of the Metalclad Plus range.

Neon indicators

Neon indicators can be included in the rockers of the switched connection units. In the case of unswitched units, they are located centrally and uppermost on the face plate. Neon indicators are integrally wired into the product and do not require separate connection when installing.

The design gives 170° visibility in the horizontal and vertical planes.

Features

- Optional indicators in the switch rockers with 170° visibility in the horizontal and vertical planes
- Worm-drive operated fuse carriers for additional security (tamper-proof version available)
- Fuse carrier lockable in open position
- All supply and load cables can be cut and stripped to the same length
- Integrally wired indicators save installation time
- Push-fit cord grips, for safer, quicker installation

Fuse carriers

These are captive and are opened by a fast acting, screwdriver operated worm drive for ease of replacement.

A tamper-proof version is also available.

Fuse carriers can be locked open using a padlock, List No. K2000.

Flex outlets

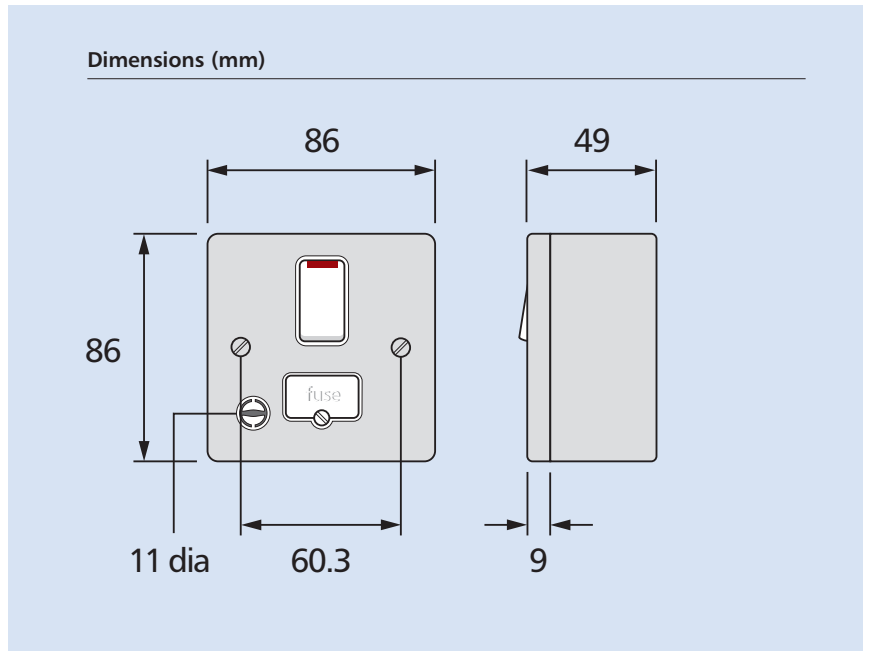
The products are equipped with very strong, push-fit nylon cord grips making installation safe, quick and easy.

- Angled, top mounted terminal screws simplify wiring
- Moulded 'on' indicator flash on switches cannot rub off – totally safe
- Captive fuse carrier
- Additional electrical safety from neutral 'make first', 'break last' feature
- Secure cable and flexible cord connection
- All terminal and fixing screws operated by one-size (4mm) screwdriver
- Backed out and captive terminal screws

Note: These switches are not recommended for switching large banks of PCs

Metalclad Plus
Connection Units &
20A DP Switches

2:2



TECHNICAL SPECIFICATION

Electrical

Voltage rating:
250V a.c.

Current rating:
Connection units – 13 amp
DP switches – 20 amp

Terminal capacity:

Supply terminal: 2 x 6mm² stranded
2 x 4mm²
3 x 2.5mm²

Load terminals: 2 x 6mm² stranded
(1 x 6mm² on earth terminal)
2 x 4mm²
3 x 2.5mm²

Flex outlet/cord grip capacities:

Connection units: min: 2 core, 0.5mm
max: 3 core, 1.5mm

20 amp DP switches:
min: 3 core, 1.5mm
max: 3 core, 2.5mm

Physical

Ambient operating temperature:
–5°C to +40°C
(not to exceed an average of more than 25°C
in any 24 hour period)

IP rating:
IP4X

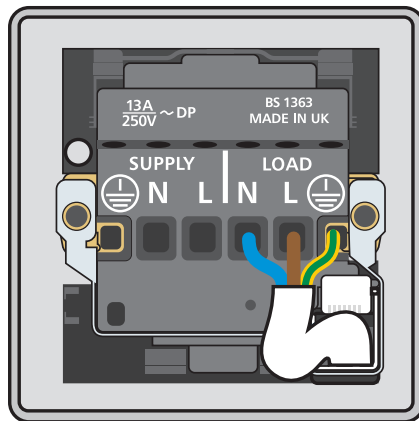
Max. installation altitude:
2000 metres

Box types

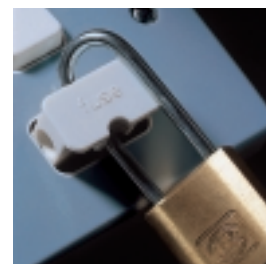
Supplied with a box having 2 x 20 mm knockouts in one side, as well as 1 x 20 mm knockouts in each of the other three sides and the bottom of the box.

Spare boxes are available without side knockouts (K829 ALM).

All boxes have a knockout in the base.



Front outlet cord grip



Lockable fuse carrier

Installation

Metalclad Plus connection units and 20A cable outlets and switches can be wall or bench mounted. Do not use on a trailing lead.

Wiring

Products must be installed in accordance with current IEE Regulations.