

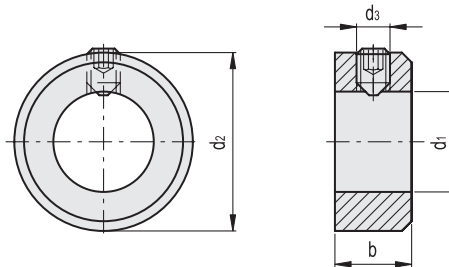
- 1
- 2
- 3
- 4
- 5
- 6
- 7
- 8
- 9
- 10
- 11
- 12
- 13
- 14
- 15
- 16
- 17
- 18

MATERIAL

AISI 303 stainless steel.

STANDARD EXECUTION

Assembly by means of stainless steel grub screw, with hexagon socket.



INOX STAINLESS STEEL

| Code | Description | d1 H8 | d2 | d3 | bjs14 | |
|----------|----------------|-------|----|--------|-------|-----|
| GN.30603 | GN 705-5-E-NI | 5 | 10 | M3x4 | 6 | 3 |
| GN.30607 | GN 705-6-E-NI | 6 | 12 | M4x5 | 8 | 6 |
| GN.30613 | GN 705-7-E-NI | 7 | 12 | M4x5 | 8 | 8 |
| GN.30617 | GN 705-8-E-NI | 8 | 16 | M4x6 | 8 | 10 |
| GN.30623 | GN 705-9-E-NI | 9 | 18 | M5x8 | 10 | 15 |
| GN.30627 | GN 705-10-E-NI | 10 | 20 | M5x8 | 10 | 19 |
| GN.30633 | GN 705-11-E-NI | 11 | 20 | M5x8 | 10 | 18 |
| GN.30637 | GN 705-12-E-NI | 12 | 22 | M6x8 | 12 | 26 |
| GN.30643 | GN 705-13-E-NI | 13 | 22 | M6x8 | 12 | 26 |
| GN.30647 | GN 705-14-E-NI | 14 | 25 | M6x8 | 12 | 32 |
| GN.30653 | GN 705-15-E-NI | 15 | 25 | M6x8 | 12 | 30 |
| GN.30657 | GN 705-16-E-NI | 16 | 28 | M6x8 | 12 | 39 |
| GN.30663 | GN 705-18-E-NI | 18 | 32 | M6x8 | 14 | 60 |
| GN.30667 | GN 705-20-E-NI | 20 | 32 | M6x8 | 14 | 53 |
| GN.30673 | GN 705-22-E-NI | 22 | 36 | M6x10 | 14 | 69 |
| GN.30677 | GN 705-24-E-NI | 24 | 40 | M8x12 | 16 | 100 |
| GN.30683 | GN 705-25-E-NI | 25 | 40 | M8x10 | 16 | 96 |
| GN.30687 | GN 705-26-E-NI | 26 | 40 | M8x10 | 16 | 91 |
| GN.30693 | GN 705-28-E-NI | 28 | 45 | M8x12 | 16 | 123 |
| GN.30697 | GN 705-30-E-NI | 30 | 45 | M8x10 | 16 | 111 |
| GN.30703 | GN 705-32-E-NI | 32 | 50 | M8x12 | 16 | 145 |
| GN.30707 | GN 705-34-E-NI | 34 | 50 | M8x12 | 16 | 132 |
| GN.30713 | GN 705-35-E-NI | 35 | 56 | M8x12 | 16 | 187 |
| GN.30717 | GN 705-36-E-NI | 36 | 56 | M8x12 | 16 | 180 |
| GN.30723 | GN 705-38-E-NI | 38 | 56 | M8x12 | 16 | 166 |
| GN.30727 | GN 705-40-E-NI | 40 | 63 | M10x16 | 18 | 261 |
| GN.30733 | GN 705-42-E-NI | 42 | 63 | M10x16 | 18 | 289 |
| GN.30737 | GN 705-45-E-NI | 45 | 70 | M10x16 | 18 | 317 |
| GN.30743 | GN 705-48-E-NI | 48 | 70 | M10x16 | 18 | 373 |
| GN.30747 | GN 705-50-E-NI | 50 | 80 | M10x16 | 18 | 429 |