

## Button Head Security Recess Pin T Drive Machine Screws - Packs of 100



### DESCRIPTION

Button Head Security Recess Pin T-Drive (also known as security Torx®) Machine Screws with bright zinc-plated, passivated finish.

### DISTINCTIVE FEATURES

- Security Torx® Drive
- Steel Grade 4.8
- M3 & M4 options
- Zinc & Clear Cr3 Finish
- Dome head style
- Supplied in packs of 100

### APPLICATIONS

The star-shaped head with central pin of these Security Pin T Drive screws makes them far more secure than regular T Drive or Torx® screws and allows higher torque transmission. They offer a further level of security as they can only be loosened with the correct drive type. Suitable for many applications, Security Pin T Drive or security Torx screws are typically used in high security applications where sensitive equipment needs protection from tampering or theft.

Button  
Head

Grade  
4.8  
Steel

Self  
Colour





## GENERAL SPECIFICATION

Series	Machine Screws
Type	Security Recess Pin T Drive



## MATERIALS

Material	Steel Grade 4.8
Finish	Zinc & Clear Cr3



## CERTIFICATION AND STANDARDS

Material Specification	~DIN 7985T ~ISO 14583
------------------------	-----------------------



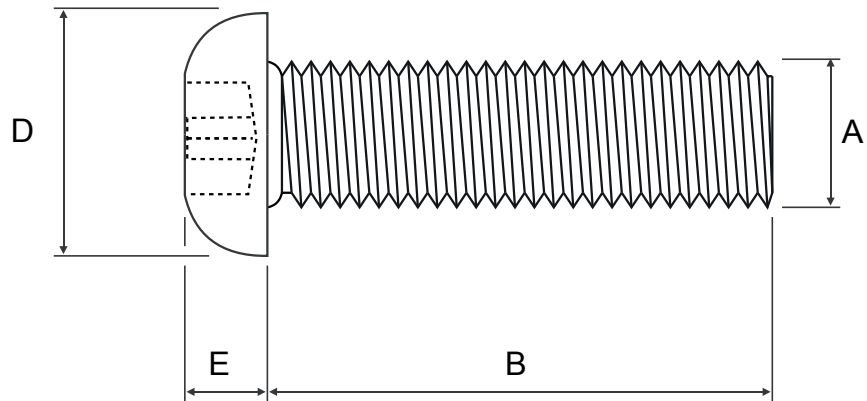
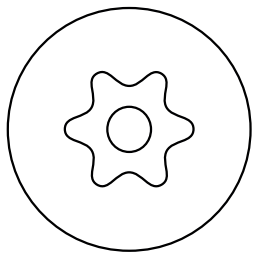
## OPTIONS (MOQ may apply)

Lengths	Various
Thread Sizes	M1.6 to M12
Thread Type	Coarse and Fine
Material	Steel
Head Styles	e.g. Pan, Countersunk, Cheese



## DIMENSIONS/DRAWINGS

Units	mm - unless stated otherwise
-------	------------------------------



## PART NUMBER TABLE

Part number	A Thread size	B Length	C Screwdriver size	D Head width	E Head depth	UNSPSC	EAN	Country of Origin
<b>33-7056</b>	M3	6.0	T10	5.5	1.6	73181900	5053556009695	United Kingdom
<b>33-7057</b>		20.0				73181900	5053556009701	United Kingdom
<b>33-7058</b>	M4	12.0	T20	7.4	2.1	73181900	5053556009718	United Kingdom

For further information on pricing, delivery, and long-term stock agreements please get in touch with your local business development contact, telephone our main office on **01206 838000** or email **Sales@Rapidonline.com**.



**Important Notice:** This data sheet and its contents (the "Information") belong to Rapid Electronics Limited or are licensed to it. No licence is granted for the use of it other than for information purposes in connection with the products to which it relates. No licence of any intellectual property rights is granted. The Information is subject to change without notice and replaces all data sheets previously supplied. The Information supplied is believed to be accurate but Rapid Electronics Limited assumes no responsibility for its accuracy or completeness, any error in or omission from it or for any use made of it. Users of this data sheet should check for themselves the Information and the suitability of the products for their purpose and not make any assumptions based on information included or omitted. Liability for loss or damage resulting from any reliance on the Information or use of it (including liability resulting from negligence or where Rapid Electronics Limited were aware of the possibility of such loss or damage arising) is excluded. This will not operate to limit or restrict Rapid Electronics Limited's liability for death or personal injury resulting from its negligence.