

MCM

FILE NO.

27-390

REV.

DESCRIPTION

DRAWN / DATE

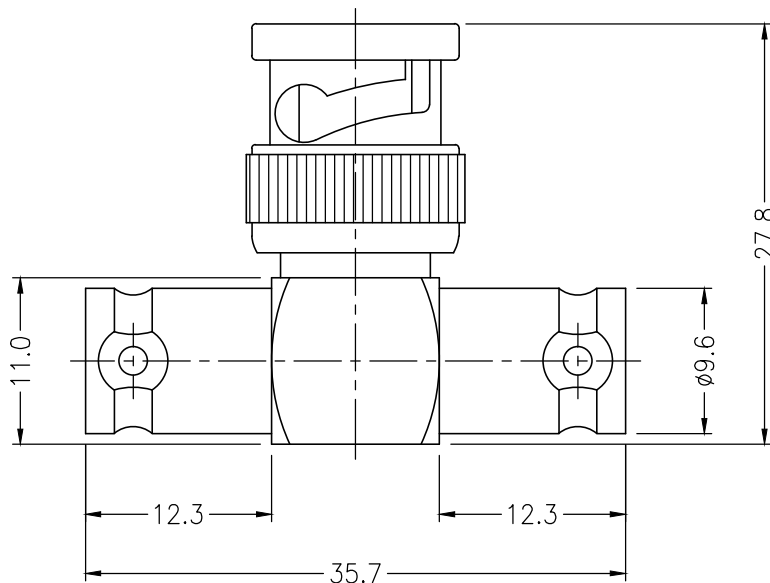
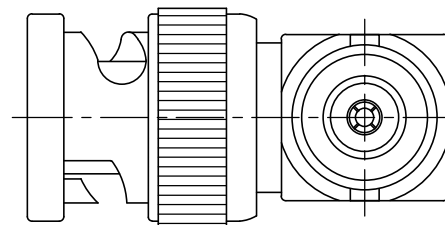
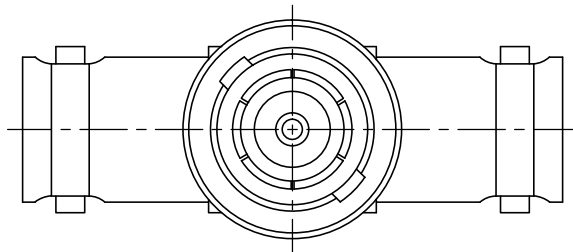
APPROVED / DATE

0

INITIAL RELEASE

YANG 10/15/2014

LISA 10/15/2014



RoHS

Specification:

1. Body: Brass, Nickel-Plated
2. Shell of BNC Male: Zinc, Nickel-Plated
3. Center Contact: Brass, Gold-Plated
4. Insulator: POM, White

www.mcmelectronics.com
DIMENSIONS ARE IN
mm [INCH]
 TOLERANCES ARE
 FRACTIONS DECIMALS ANGLES
 0.5~6 = ±0.2 [0.008]
 >6~30 = ±0.4 [0.016]
 >30~120 = ±0.6 [0.024]

MATERIAL

FINISH

COLOR

BNC-Male to BNC-Female
Adapter

P/N

PROJECT NO.

SCALE 2:1

SIZE A4

SHEET 1 OF 1

DRAWN YANG

DATE 10/15/2014

MC068