

## Drawer cabinets

Stationary

**LISTA**  
making workspace work

### Application:

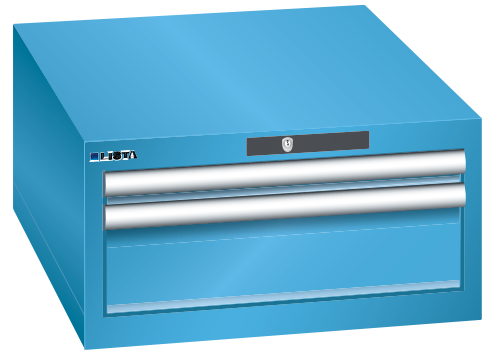
For day-to-day heavy-duty use in workshops

### Execution:

- All drawers with full extension
- Individual drawer lock as standard feature to prevent the cabinet from tipping over
- Perforated, slotted drawers provide a secure hold
- Very robust construction for a wide variety of applications and very demanding requirements

### Advantage:

- Optimum wall height to keep items from falling out and getting lost
- Folding handle strips for simple, clean and protected labelling
- High quality - made in Germany and Swiss-made
- Runs perfectly smoothly and easily due to the lack of crossbars on the differential extension slide
- Full extension - clear overview and optimal access



<b>Art. no.</b>	<b>50300 931</b>
<b>Brand</b>	LISTA
<b>Manufacturer Part Number</b>	70.047.010
<b>Number of drawers</b>	2 PCS
<b>Height</b>	283 mm
<b>Width</b>	564 mm
<b>Depth</b>	725 mm
<b>Height x width x depth</b>	283 x 564 x 725 mm
<b>Drawer width (inner dimension) x drawer depth (inner dimension)</b>	450 x 600 mm
<b>Load-carrying capacity per drawer</b>	75 kg
<b>Drawer lock</b>	Standard
<b>Drawer front height</b>	1 x 50 mm, 1 x 150 mm
<b>Cabinet colour</b>	Light blue RAL 5012
<b>Colour of front</b>	Light blue RAL 5012
<b>Opening/closing system</b>	RFID Lock
<b>Clear height</b>	200 mm
<b>LISTA unit</b>	27 x 36 E
<b>Gross Weight</b>	49.000 kg
<b>Product Group</b>	5AN