

Typically used for providing **high performance, reliable and robust connections** in commercial and industrial automation applications, these **IP67 rated signal and power connectors** offer a **high degree of protection** against environmental factors such as water, dirt and moisture.

Bulgin's range of M23 Connectors includes field installable male and female connectors as well as front panel mount options from 12- to 19-pole in straight and right angled versions.



Key features:

- ⊞ A-Coded
- ⊞ Male and female variants, 12 or 19 poles
- ⊞ Straight and angled configurations
- ⊞ Robust metal housing
- ⊞ IP67 protection rating (when mated)
- ⊞ Voltages up to 250 V and currents up to 8 A

BUCCANEER
M23 Series

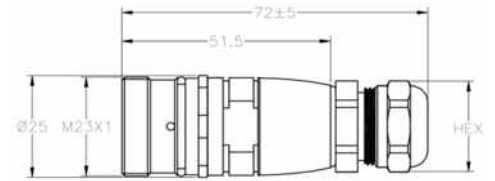


M23 Flex Inline Body



PXMBNI23FIM

- Available in 12 and 19 poles
- Solder termination
- Metal Flex Inline Body
- Mates with panel mount connectors



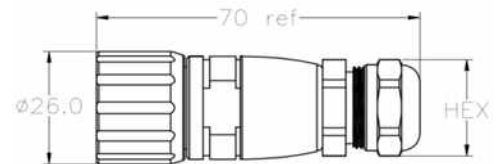
Part Number	Poles	Code	Termination
PXMBNI23FIM12ASC	12	A	Solder Terminal
PXMBNI23FIM19ASC	19	A	Solder Terminal

M23 Flex Body Female



PXMBNI23FBF

- Available in 12 and 19 poles
- Solder termination
- Metal Flex Body
- Mates with panel mount connectors



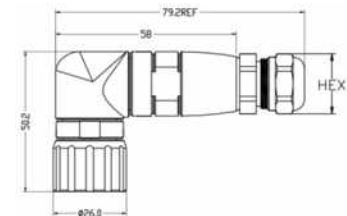
Part Number	Poles	Code	Termination
PXMBNI23FBF12ASC	12	A	Solder Terminal
PXMBNI23FBF19ASC	19	A	Solder Terminal

M23 Right Angled Female



PXMBNI23RAF

- Available in 12 and 19 poles
- Solder termination
- Metal Right Angle Flex Body
- Mates with panel mount connectors



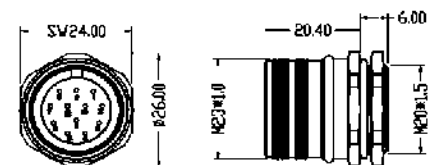
Part Number	Poles	Code	Termination
PXMBNI23RAF12ASC	12	A	Solder Terminal
PXMBNI23RAF19ASC	19	A	Solder Terminal

M23 Front Panel Mounting Male



PXMBNI23FPM

- Available in 12 and 19 poles
- Solder termination
- Front panel M20
- Mates with Flex Body connectors



Part Number	Poles	Code	Termination
PXMBNI23FPM12ASC	12	A	Solder Terminal
PXMBNI23FPM19ASC	19	A	Solder Terminal

Electrical:

No. Poles	12	19
Current Rating	8A	8A
Voltage Rating (ac/dc)	200V	200V
Contact Resistance	<3mΩ	
Insulation Resistance	>100 ³ MΩ	
AC Breakdown Voltage		
12 Pole	1.5KV	
19 Pole	1.5KV	
Operating Temp Range	-25°C to 80°C	

Mechanical:

Locking mechanism	Screw coupling
Sealing	IP67
Contact Accomodation	
12 Pole	18 AWG
19 Pole	17 AWG
Cable acceptance	6.0 - 8.0mm Dia
Terminations	Solder
Mechanical Operation	500 mating cycles
Diameter over coupling ring	26.0mm

Materials:

Panel Mount

Flex & Inline Connectors

Body	Nickel Plated Brass	Nickel Plated Brass
Coupling Nut	Nickel Plated Brass	Nickel Plated Brass
Colour	Grey	Grey
Pin Contacts	Brass, Gold plating	Brass, Gold plating
Socket Contacts	Phosphor Bronze, Gold plating	Phosphor Bronze, Gold plating
O Rings & Gaskets	Viton	Viton
RoHS	Compliant	Compliant

MX	XXX	XX	XX	X	XX	X	XX
Series	Material	Series Size	Body Style	Orientation	No. Contacts	Code	Termination
PXM	BNI = Brass Nickel	23	FB = Flex Body	M	12	A	SC = Solder
PXP			FI = Flex Inline Body FP = Front Panel Mounting RA = Right Angle	F	19		